

## ARG24058 Goat anti-Human Kappa Light Chain antibody, pre-adsorbed

Package: 500 µg  
Store at: -20°C

### Summary

|                     |   |
|---------------------|---|
| Product Description | Goat Polyclonal antibody recognizes Human Kappa Light Chain   |
| Tested Reactivity   | Hu  |
| Tested Application  | ELISA, ELISPOT, FACS, FLISA, ICC/IF, IHC-P, IP, Puri, WB  |
| Specificity         | The antibody reacts with human kappa light chains. The antibody is pre-adsorbed with Human lambda light chains, so the antibody may not react with Human lambda light chains, but may react with kappa light chains from other species. |
| Host                | Goat  |
| Clonality           | Polyclonal  |
| Isotype             | IgG   |
| Target Name         | Kappa Light Chain   |
| Species             | Human   |
| Immunogen           | Human Kappa Light Chain   |
| Conjugation         | Un-conjugated   |

### Application Instructions

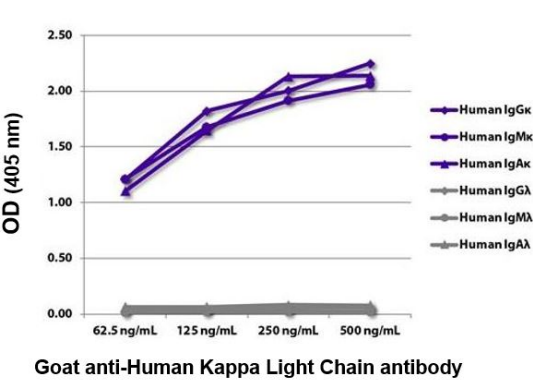
| Pre Adsorbed      | Human lambda light chains.   |                 |
|-------------------|--|-----------------|
| Application table | Application  | Dilution        |
|                   | ELISA  | Assay-dependent |
|                   | ELISPOT  | Assay-dependent |
|                   | FACS   | Assay-dependent |
|                   | FLISA  | Assay-dependent |
|                   | ICC/IF   | Assay-dependent |
|                   | IHC-P  | Assay-dependent |
|                   | IP   | Assay-dependent |
|                   | Puri   | Assay-dependent |
|                   | WB   | Assay-dependent |
| Application Note  | * The dilutions indicate recommended starting dilutions and the optimal dilutions or concentrations should be determined by the scientist. |                 |

### Properties

|      |        |
|------|--------|
| Form | Liquid |
|------|--------|

|                     |  |
|---------------------|--|
| Purification        | Affinity purification with immunogen.  |
| Buffer              | BBS (pH 8.2)   |
| Concentration       | 1 mg/ml  |
| Storage instruction | For continuous use, store undiluted antibody at 2-8°C for up to a week. For long-term storage, aliquot and store at -20°C or below. Storage in frost free freezers is not recommended. Avoid repeated freeze/thaw cycles. Suggest spin the vial prior to opening. The antibody solution should be gently mixed before use. |
| Note                | For laboratory research only, not for drug, diagnostic or other use.   |

Images



ARG24058 Goat anti-Human Kappa Light Chain antibody (pre-adsorbed) ELISA image

ELISA: The plate was coated with purified Human IgGκ, IgMκ, IgAκ, IgGλ, IgMλ and IgAλ. Immunoglobulins were detected with serially diluted ARG24058 Goat anti-Human Kappa Light Chain antibody (pre-adsorbed) followed by Mouse anti-Goat IgG Fc antibody (HRP).