

## ARG24068 Goat anti-Human Lambda Light Chain antibody (PE), pre-adsorbed

Package: 250 µg  
Store at: 4°C

### Summary

Product Description	PE-conjugated Goat Polyclonal antibody recognizes Human Lambda Light Chain
Tested Reactivity	Hu
Tested Application	FACS, FLISA, ICC/IF, IHC-P, WB
Specificity	The antibody reacts with human lambda light chains. The antibody is pre-adsorbed with Human kappa light chains, so the antibody may not react with Human kappa light chains, but may react with lambda light chains from other species.
Host	Goat
Clonality	Polyclonal
Isotype	IgG
Target Name	Lambda Light Chain
Species	Human
Immunogen	Human Lambda Light Chain
Conjugation	PE

### Application Instructions

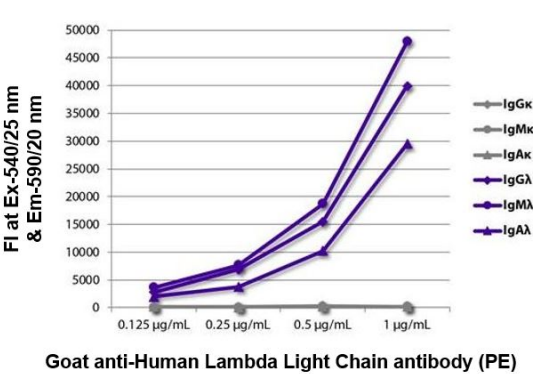
Pre Adsorbed	Human kappa light chains.	
Application table	Application	Dilution
	FACS	0.1 µg/10 <sup>6</sup> cells
	FLISA	1 µg/ml
	ICC/IF	Assay-dependent
	IHC-P	Assay-dependent
	WB	Assay-dependent
Application Note	* The dilutions indicate recommended starting dilutions and the optimal dilutions or concentrations should be determined by the scientist.	

### Properties

Form	Liquid
Purification	Affinity purification with immunogen.
Buffer	PBS, 0.1% Sodium azide and Sucrose.
Preservative	0.1% Sodium azide
Stabilizer	Sucrose

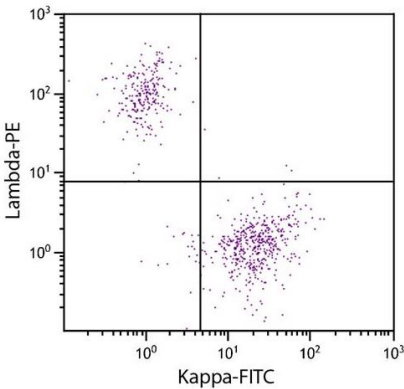
Concentration	0.5 mg/ml
Storage instruction	Aliquot and store in the dark at 2-8°C. Keep protected from prolonged exposure to light. Avoid repeated freeze/thaw cycles. Suggest spin the vial prior to opening. The antibody solution should be gently mixed before use.
Note	For laboratory research only, not for drug, diagnostic or other use.

Images



ARG24068 Goat anti-Human Lambda Light Chain antibody (PE) (pre-adsorbed) FLISA image

FLISA: The plate was coated with purified Human IgGκ, IgMκ, IgAκ, IgGλ, IgMλ and IgAλ. Immunoglobulins were detected with serially diluted ARG24068 Goat anti-Human Lambda Light Chain antibody (PE) (pre-adsorbed).



ARG24068 Goat anti-Human Lambda Light Chain antibody (PE) (pre-adsorbed) FACS image

Flow Cytometry: CD19+ Human B-lymphocytes were stained with ARG24068 Goat anti-Human Lambda Light Chain antibody (PE) (pre-adsorbed) and [ARG21678](#) Goat anti-Human Kappa Light Chain antibody, F(ab')2 fragment (FITC) (pre-adsorbed).