

ARG24085 Goat anti-Human Kappa Light Chain antibody, pre-adsorbed

Package: 500 µg
Store at: -20°C

Summary

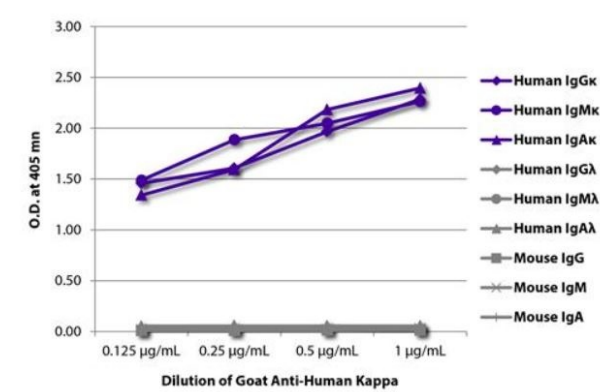
Product Description	Goat Polyclonal antibody recognizes Human Kappa Light Chain
Tested Reactivity	Hu
Tested Application	ELISA, FACS, WB
Specificity	The antibody reacts with human kappa light chains. The antibody is pre-adsorbed with human lambda light chains, mouse immunoglobulins and pooled sera. The antibody may react with kappa light chains from other species.
Host	Goat
Clonality	Polyclonal
Isotype	IgG
Target Name	Kappa Light Chain
Species	Human
Immunogen	Human Kappa Light Chain.
Conjugation	Un-conjugated
Alternate Names	Ig kappa chain

Application Instructions

Pre Adsorbed	Human lambda light chains, mouse immunoglobulins and pooled sera.	
Application table	Application	Dilution
	ELISA	Assay-dependent
	FACS	1 µg/10 ⁶ cells
	WB	Assay-dependent
Application Note	* The dilutions indicate recommended starting dilutions and the optimal dilutions or concentrations should be determined by the scientist.	

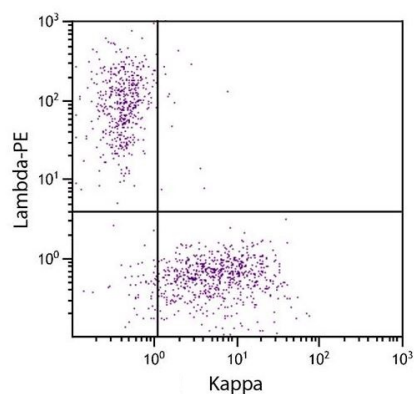
Properties

Form	Liquid
Purification	Affinity purification with immunogen.
Buffer	BBS (pH 8.2)
Storage instruction	For continuous use, store undiluted antibody at 2-8°C for up to a week. For long-term storage, aliquot and store at -20°C or below. Storage in frost free freezers is not recommended. Avoid repeated freeze/thaw cycles. Suggest spin the vial prior to opening. The antibody solution should be gently mixed before use.
Note	For laboratory research only, not for drug, diagnostic or other use.



ARG24085 Goat anti-Human Kappa Light Chain antibody (pre-adsorbed) ELISA image

ELISA: The plate was coated with purified human IgGκ, IgMκ, IgAκ, IgGλ, IgMλ, and IgAλ and mouse IgG, IgM, and IgA. Immunoglobulins were detected with serially diluted ARG24085 Goat anti-Human Kappa Light Chain antibody (pre-adsorbed), followed by Mouse anti-Goat IgG Fc antibody (HRP).



ARG24085 Goat anti-Human Kappa Light Chain antibody (pre-adsorbed) FACS image

Flow Cytometry: CD19+ human B-lymphocytes were stained with ARG24085 Goat anti-Human Kappa Light Chain antibody (pre-adsorbed) and Goat F(ab')₂ anti-Human Lambda Light Chain antibody (PE), followed by Mouse anti-Goat IgG Fc antibody (Alexa Fluor® 488).