

ARG30002 Tag Internal Control Antibody Duo (His tag, GAPDH)

Package: 1 pair
Store at: -20°C

Component

| Cat. No. | Component Name | Host clonality | Reactivity | Application | Package |
|----------|-----------------------------------|----------------|--|----------------------------------|---------|
| ARG10112 | anti-GAPDH antibody [6C5] | Mouse mAb | AGMK, Bb, Cat, Chk, Dog, Fsh, Hm, Hu, Mk, Ms, Pig, Rb, Rat, Xenopus laevis, Zfsh | ELISA, ICC/IF, IHC-Fr, WB | 50 µg |
| ARG62337 | anti-6X His tag antibody [HIS.H8] | Mouse mAb | Other | Dot, EMSA, ELISA, ICC/IF, IP, WB | 50 µg |

Summary

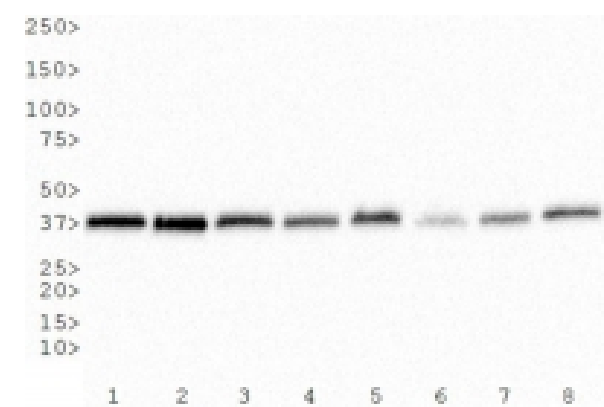
| | |
|---------------------|--|
| Product Description | His-tag, also known as hexa histidine-tag, 6xHis-tag or His6 tag, is a polyhistidine-tag (H-H-H-H-H-H) motif in proteins that consists of at least six histidine (His) residues at the N- or C-terminus of the protein. His-tag is used as a tag on many recombinant proteins for the purification or protein study in cells. GAPDH is often stably and constitutively expressed at high levels in most tissues and cells in cytoplasm. Therefore, GAPDH is a widely used loading control and cytoplasm marker for western blot (35-40kDa) and ICC/IF study. Usage note: S-nitrosylated GAPDH might translocate to nucleus especially for nitric oxide-related studies. In addition, the GAPDH expression level is up regulated under hypoxia condition. Therefore, GAPDH is not suitable for loading control and cytoplasm marker for oxygen-related and nitric oxide-related studies. To study protein function in cells, researchers could use anti-His tag antibody to recognize the His-tagged protein in the samples. Meanwhile, a good internal control is also important to control the loading of samples or the location of the intracellular organelles. ARG3002 Tag Internal control Duos (His tag, GAPDH), including an antibody reacts His-tag and an antibody recognizes GAPDH as a cytoplasm control and loading control is useful for His-tagged protein study for you. |
| Target Name | Tag Internal Control |
| Alternate Names | Tag Internal Control antibody; GAPDH antibody; 6X His tag antibody |

Properties

| | |
|---------------------|--|
| Storage instruction | For continuous use, store undiluted antibody at 2-8°C for up to a week. For long-term storage, aliquot and store at -20°C or below. Storage in frost free freezers is not recommended. Avoid repeated freeze/thaw cycles. Suggest spin the vial prior to opening. The antibody solution should be gently mixed before use. |
| Note | For laboratory research only, not for drug, diagnostic or other use. |

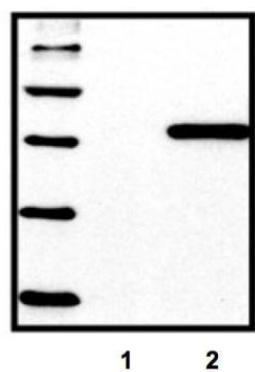
Bioinformation

| | |
|----------------|---|
| Gene Full Name | Antibody Duo for Tag Internal Control (His tag, GAPDH) |
| Highlight | Related Product: anti-6X His tag antibody; anti-GAPDH antibody; |
| Research Area | Cancer antibody; Controls and Markers antibody; Metabolism antibody; Neuroscience antibody; Signaling Transduction antibody |



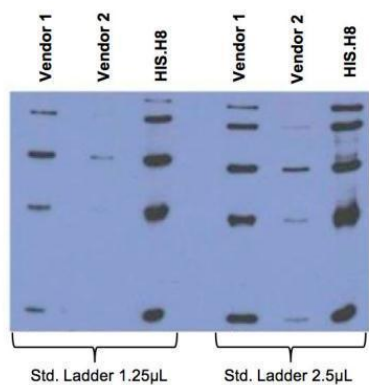
ARG10112 anti-GAPDH antibody [6C5] WB image

Western Blot: 1) HeLa, 2) NTERA-2, 3) A-431, 4) HepG2, 5) MCF-7, 6) NIH 3T3, 7) PC-12 and 8) COS-7 whole cell lysates stained with anti-GAPDH antibody [6C5] (ARG10112)



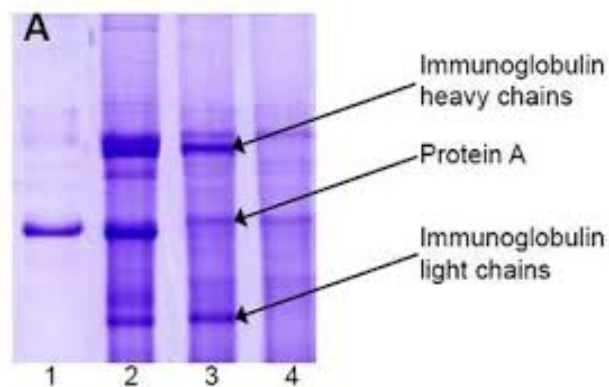
ARG62337 anti-6x His tag antibody [HIS.H8] WB image

Western Blot: (1) untransfected control, (2) HEK293 cells transfected with His-tagged protein vector stained with ARG62337 anti-6x His tag antibody [HIS.H8]



ARG62337 anti-6x His tag antibody [HIS.H8] WB image

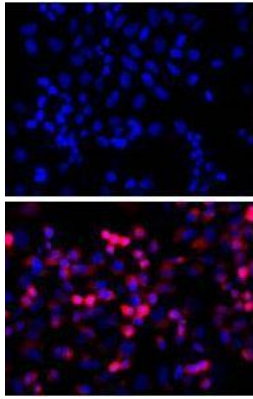
Western Blot: a standard ladder containing five different His-tagged proteins stained with anti-His tag (HIS.H8 / EH158) mAb at 1:2000 (0.5 µg/mL) to compare between.



ARG10112 anti-GAPDH antibody [6C5] IP image

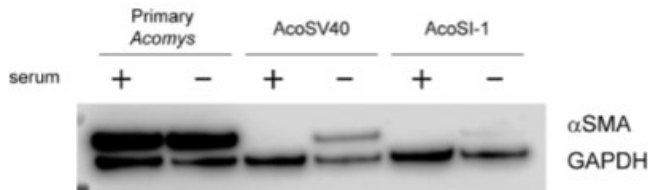
Immunoprecipitation and western blot: 1) GAPDH (1 µg). 2) GAPDH IP from rat heart tissue extract. 3) Only GAPDH preincubated with Protein A Sepharose. 4) Only Protein A Sepharose stained with ARG10112 GAPDH antibody [6C5].

Mixture of protein A-Sepharose with ARG10112 anti-GAPDH and tissue extract was incubated for 30 min at room temperature and precipitated by centrifugation. Pellet was washed with PBS, suspended in reducing electrophoresis sample buffer and heated for 5 minutes at 100°C. After centrifugation supernatant was loaded on gel and proteins were separated by SDS electrophoresis.



ARG62337 anti-6x His tag antibody [HIS.H8] ICC/IF image

TOP: untransfected control; BOTTOM: anti-His (in red) on His-tagged fusion proteins in HEK293 cells. Both counterstained with DAPI (in blue)



ARG10112 anti-GAPDH antibody [6C5] WB image

Western blot: pAFs, AcoSV40, and AcoSI-1 stained with ARG10112 anti-GAPDH antibody [6C5] at 1:5000 dilution.

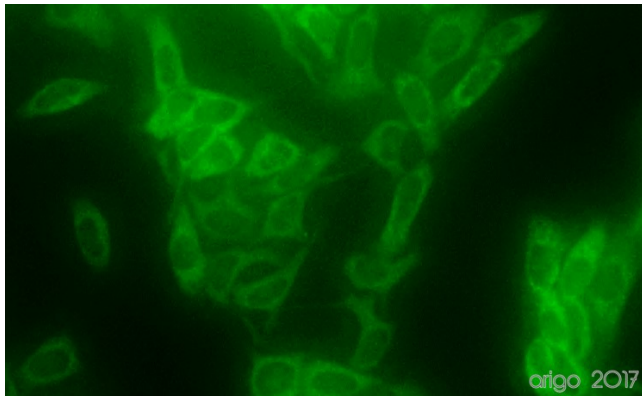
From Michele N Dill et al. PLoS One. (2023), [doi: 10.3389/fcell.2022.899869](https://doi.org/10.3389/fcell.2022.899869), Fig. 2. C.



ARG10112 anti-GAPDH antibody [6C5] WB image

Western blot: Porcine kidney stained with ARG10112 anti-GAPDH antibody [6C5].

From Gianni Huang et al. Front Cell Dev Biol (2022), [doi: 10.3389/fcell.2022.899869](https://doi.org/10.3389/fcell.2022.899869), Fig. 2. E.



ARG10112 anti-GAPDH antibody [6C5] ICC/IF image

Immunofluorescence: 100% Methanol fixed (RT, 10 min) HeLa cells stained with ARG10112 anti-GAPDH antibody [6C5] (green) at 1:200 dilution.

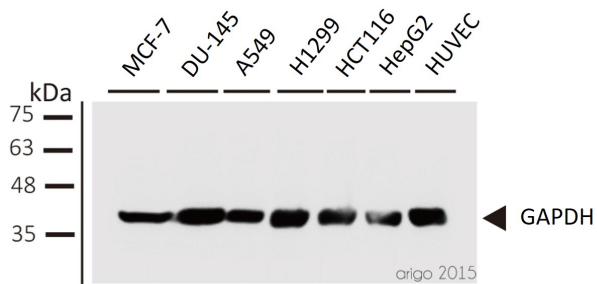
Secondary antibody: [ARG55393](https://doi.org/10.3389/fcell.2022.899869) Goat anti-Mouse IgG (H+L) antibody (FITC)



ARG10112 anti-GAPDH antibody [6C5] WB image

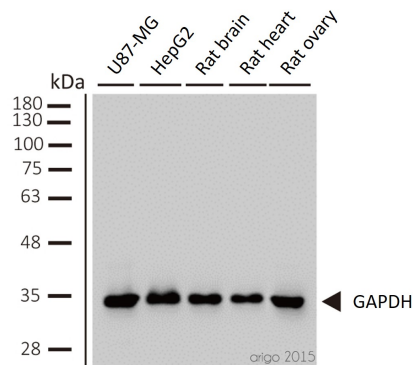
Western blot: Mouse samples stained with ARG10112 anti-GAPDH antibody [6C5] at 1:1000 dilution.

From Yun-Yun Li et al. Int J Biol Sci (2022), [doi: 10.7150/ijbs.68224](https://doi.org/10.7150/ijbs.68224), Fig. 5. C.



ARG10112 anti-GAPDH antibody [6C5] WB image

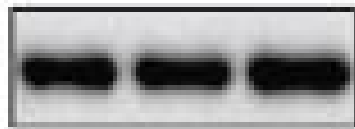
Western blot: 1) MCF-7 2) DU-145 3) A549 4) H1299 5) HCT116 6) HepG2 7) HUVEC stained with ARG10112 anti-GAPDH antibody [6C5] at 1:1000 dilution.



ARG10112 anti-GAPDH antibody [6C5] WB image

Western blot: 1) U87-MG 2) HepG2 3) rat brain 4) rat heart 5) rat ovary stained with ARG10112 anti-GAPDH antibody [6C5] at 1:2000 dilution.

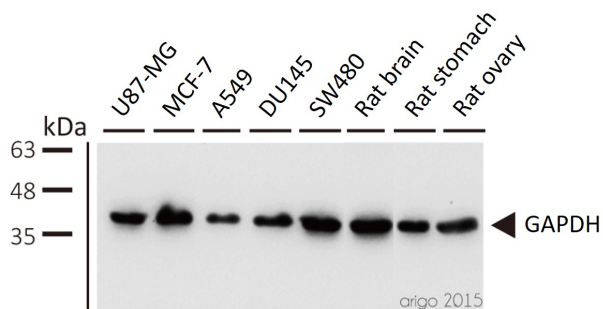
GAPDH



ARG10112 anti-GAPDH antibody [6C5] WB image

Western blot: HUVEC stained with ARG10112 anti-GAPDH antibody [6C5].

From Bingzheng Lu et al. Oxid Med Cell Longev (2020), [doi: 10.1155/2020/2048210](https://doi.org/10.1155/2020/2048210), Fig. 5. B.



ARG10112 anti-GAPDH antibody [6C5] WB image

Western blot: 1) U87-MG 2) MCF-7 3) A549 4) DU145 5) SW480 6) rat brain 7) rat stomach 8) rat ovary stained with ARG10112 anti-GAPDH antibody [6C5] at 1:5000 dilution.