

## ARG30041 Phospho IRS1 Antibody Duo (Total, pS636)

Package: 1 pair  
Store at: -20°C

### Component

Cat. No.	Component Name	Host clonality	Reactivity	Application	Package
ARG51720	anti-IRS1 phospho (Ser636) antibody	Rabbit pAb	Hu, Ms, Rat	IHC-P, WB	50 µl
ARG51203	anti-IRS1 antibody	Rabbit pAb	Hu, Ms, Rat	ICC/IF, IHC-P, WB	50 µl

### Summary

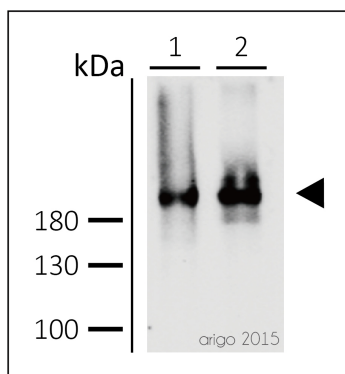
Product Description	Insulin receptor substrate 1 (IRS-1) is a signalling adapter protein that is phosphorylated by insulin receptor tyrosine kinase. Mutations in IRS-1 are associated with type II diabetes and susceptibility to insulin resistance. IRS-1 plays a key role in transmitting signals from the insulin and insulin-like growth factor-1 (IGF-1) receptors to PI3K / Akt and Erk MAP kinase pathways. IRS-1 also plays important biological function for both metabolic and mitogenic pathways. IRS-1 could be phosphorylated by p70S6K, a downstream protein of Akt, at Ser-307, Ser-636, and Ser-1101 to insulin sensitivity. In addition, IRS-1 is also potentially phosphorylated by the PKCθ kinase at Ser307. ARG30040, ARG30041 and ARG30042 IRS-1 phospho-Duos, containing antibodies recognize total IRS-1 and phosphorylated IRS-1 at Ser307 or Ser636, and PKC theta (pS695). These Duos are designed for the IRS-1 related studies; insulin related signaling and IRS-1 regulation study.
Target Name	IRS1
Alternate Names	Phospho IRS1 antibody; Phospho Insulin receptor substrate 1 antibody; IRS1 antibody; IRS1 phospho (Ser636) antibody

### Properties

Storage instruction	For continuous use, store undiluted antibody at 2-8°C for up to a week. For long-term storage, aliquot and store at -20°C or below. Storage in frost free freezers is not recommended. Avoid repeated freeze/thaw cycles. Suggest spin the vial prior to opening. The antibody solution should be gently mixed before use.
Note	For laboratory research only, not for drug, diagnostic or other use.

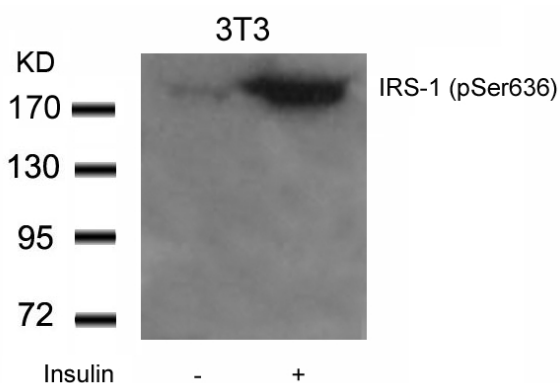
### Bioinformation

Gene Full Name	Phospho Insulin receptor substrate 1 (IRS1) Antibody Duo (Total, pS636)
Research Area	Cancer antibody; Cell Biology and Cellular Response antibody; Controls and Markers antibody; Metabolism antibody; Neuroscience antibody; Signaling Transduction antibody



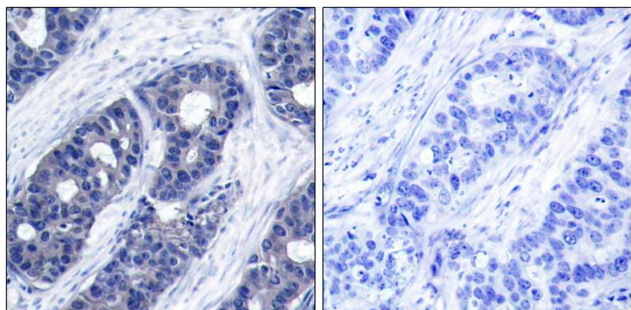
ARG51203 anti-IRS-1 antibody WB image

Western blot: 30 µg of 1) A549 and 2) HepG2 cell line lysate stained with ARG51203 anti-IRS-1 antibody at 1:500 dilution.



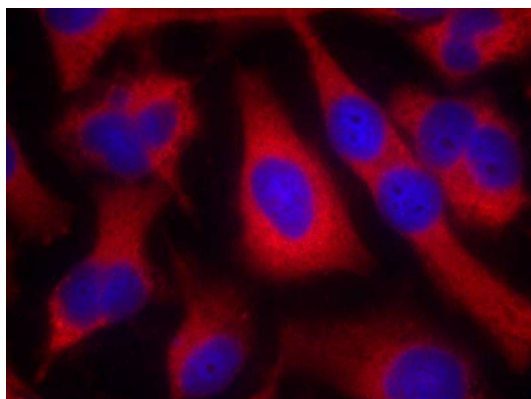
ARG51720 anti-IRS-1 phospho (Ser636) antibody WB image

Western Blot: extracts from 3T3 cells untreated or treated with Insulin stained with anti-IRS-1 (phospho Ser636) antibody ARG51720.



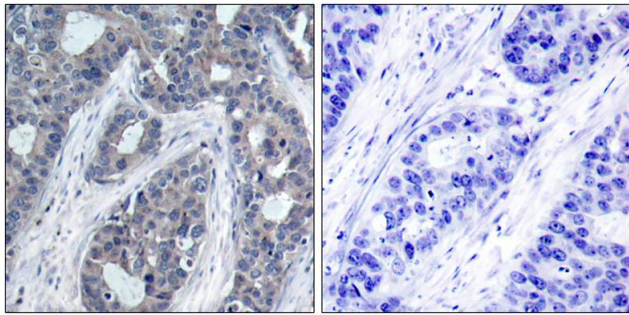
ARG51203 anti-IRS-1 antibody IHC-P image

Immunohistochemistry: paraffin-embedded human breast carcinoma tissue stained with anti-IRS-1 antibody ARG51203 (left) or the same antibody preincubated with blocking peptide (right).



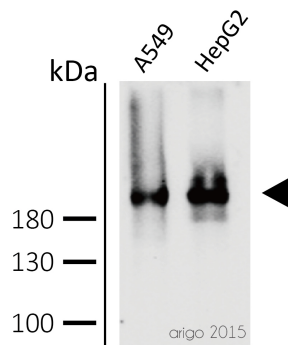
ARG51203 anti-IRS-1 antibody ICC/IF image

Immunofluorescence: methanol-fixed HeLa cells stained with anti-IRS-1 antibody ARG51203.



ARG51720 anti-IRS-1 phospho (Ser636) antibody IHC-P image

Immunohistochemistry: paraffin-embedded human breast carcinoma tissue stained with anti-IRS-1 (phospho Ser636) antibody ARG51720 (left) or the same antibody preincubated with blocking peptide (right).



ARG51203 anti-IRS1 antibody WB image

Western blot: 30  $\mu$ g of A549 and HepG2 cell line lysate stained with ARG51203 anti-IRS1 antibody at 1:500 dilution.