

ARG30098 Phospho CREB Antibody Duo (Total, pS133)

Package: 1 pair
Store at: -20°C

Component

Cat. No.	Component Name	Host clonality	Reactivity	Application	Package
ARG54699	anti-CREB antibody [1335CT115.203.189]	Mouse mAb	Hu, Ms, Rat	WB	50 µl
ARG51556	anti-CREB phospho (Ser133) antibody	Rabbit pAb	Hu, Ms, Rat	IHC-P, WB	50 µl

Summary

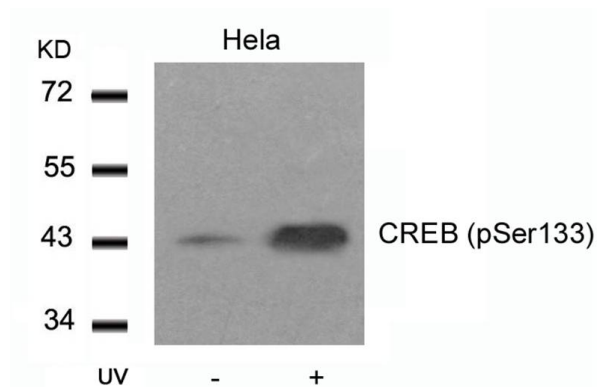
Product Description	Related news: A designer cell-based histamine-specific human allergy profiler
Target Name	CREB
Alternate Names	Phospho CREB antibody; Phospho cAMP responsive element binding protein antibody; CREB phospho (Ser133) antibody; CREB antibody

Properties

Storage instruction	For continuous use, store undiluted antibody at 2-8°C for up to a week. For long-term storage, aliquot and store at -20°C or below. Storage in frost free freezers is not recommended. Avoid repeated freeze/thaw cycles. Suggest spin the vial prior to opening. The antibody solution should be gently mixed before use.
Note	For laboratory research only, not for drug, diagnostic or other use.

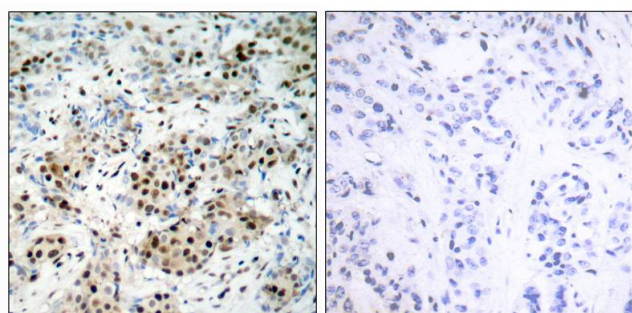
Bioinformation

Gene Full Name	Phospho cAMP responsive element binding protein (CREB) Antibody Duo (Total, pS133)
Highlight	Related Product: anti-CREB antibody; anti-CREB phospho (Ser133) antibody;
Research Area	Gene Regulation antibody; Immune System antibody



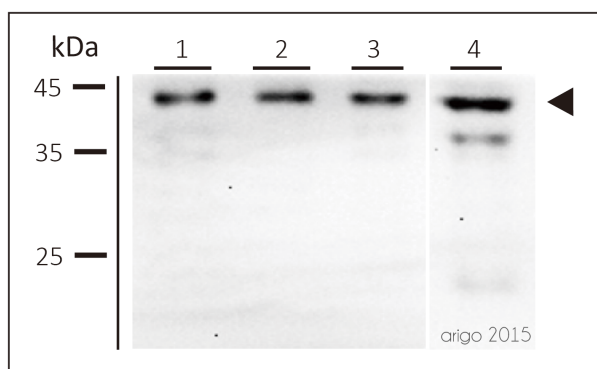
ARG51556 anti-CREB phospho (Ser133) antibody WB image

Western Blot: extracts from HeLa cells untreated or treated with UV stained with anti-CREB (phospho Ser133) antibody ARG51556.



ARG51556 anti-CREB phospho (Ser133) antibody IHC-P image

Immunohistochemistry: paraffin-embedded human breast carcinoma tissue stained with anti-CREB (phospho Ser133) antibody ARG51556 (left) or the same antibody preincubated with blocking peptide (right).



ARG54699 anti-CREB antibody WB image

Western blot: 30 µg of 1) U87-MG, 2) HEK293T, 3) MEF, and 4) Mouse brain lysate stained with ARG54699 anti-CREB antibody at 1:500 dilution.