

ARG30105 Apoptosis Marker Antibody Duo (Caspase3, PARP)

Package: 1 pair

Store at: -20°C

Component

Cat. No.	Component Name	Host clonality	Reactivity	Application	Package
ARG20001	anti-Caspase 3 antibody [C33]	Mouse mAb	Hu	WB	25 µg

Summary

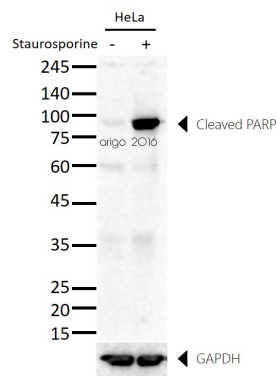
Product Description	<p>The TUNEL assay has been commonly used as a detection method for identifying apoptotic cells. While useful, it can also yield highly variable results as some non-apoptotic nuclei showing high levels of RNA synthesis/splicing can also be labeled by TUNEL technique.</p> <p>Cleavage of Caspase 3 and PARP (Poly (ADP-ribose) Polymerase) is a pre-requisite for cells who undergo final stage of cell death. The use of anti-cleaved caspase3 (ARG20003) and anti-cleaved PARP (ARG20041) antibodies adds a more specific weapon to the arsenal of techniques for confirming apoptosis in tissue specimens.</p>
Target Name	Apoptosis Marker
Alternate Names	Apoptosis Marker antibody; Caspase 3 antibody; PARP (cleaved) antibody

Properties

Storage instruction	For continuous use, store undiluted antibody at 2-8°C for up to a week. For long-term storage, aliquot and store at -20°C or below. Storage in frost free freezers is not recommended. Avoid repeated freeze/thaw cycles. Suggest spin the vial prior to opening. The antibody solution should be gently mixed before use.
Note	For laboratory research only, not for drug, diagnostic or other use.

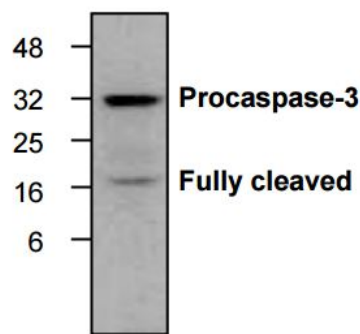
Bioinformation

Gene Full Name	Antibody Duo for Apoptosis Marker (Caspase3, PARP)
Research Area	Cancer antibody; Cell Biology and Cellular Response antibody; Cell Death antibody; Gene Regulation antibody; Neuroscience antibody



ARG20041 anti-PARP (cleaved) antibody WB image

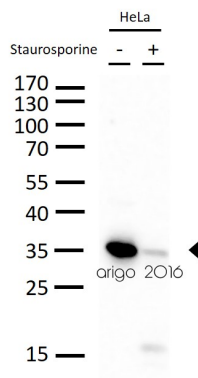
Western blot: 30 µg of HeLa untreated or treated with Staurosporine and stained with ARG20041 anti-PARP (cleaved) antibody at 1:500 dilution.



ARG20001 anti-Caspase-3 antibody [C33] WB image

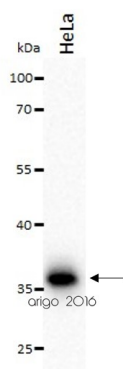
Western blot: HeLa cells treated with camptothecin (2 µM) stained with ARG20001 anti-Caspase-3 antibody [C33].

The antibody recognizes both proform and the cleaved large fragment of caspase-3 in samples of human, mouse and rat origins. However, the optimal conditions should be determined individually.



ARG20001 anti-Caspase 3 antibody [C33] WB image

Western blot: 30 µg of HeLa cells untreated or treated with Staurosporine (1µM, overnight). The blots were stained with ARG20001 anti-Caspase 3 antibody [C33] at 1:500 dilution.



ARG20001 anti-Caspase 3 antibody [C33] WB image

Western blot: 20 µg of HeLa cell lysates stained with ARG20001 anti-Caspase 3 antibody [C33] at 2 µg/ml dilution.