

ARG30106 Mitochondria / Caspase Dependant Apoptosis Marker Antibody Duo (Caspase9, Cytochrome c)

Package: 1 pair
Store at: -20°C

Component

Cat. No.	Component Name	Host clonality	Reactivity	Application	Package
ARG20048	anti-Caspase 9 (cleaved) antibody	Rabbit pAb	Hu	IP, WB	25 µg
ARG20006	anti-Cytochrome C antibody	Rabbit pAb	Hu, Ms, Rat, Bov, Chk, Dog	IP, WB	25 µg

Summary

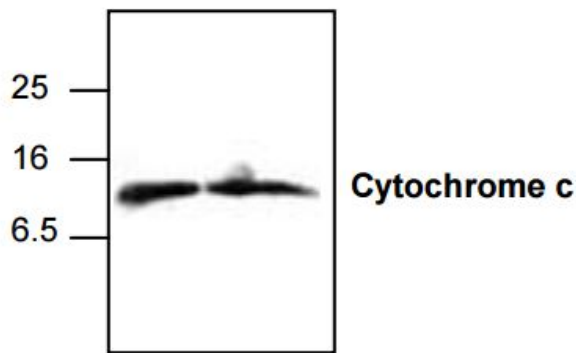
Product Description	Cytochrome C is an electron transport protein localized in the mitochondria. When a cell receive intra- or extra-cellular death signal, Cytochrome C is then released from mitochondria to cytoplasm and trigger Procaspase 9 activation. Detection of the cytoplasmic release of Cytochrome C and activation of Caspase 9 with anti-Cytochrome C (ARG20006) and anti-Caspase 9 (ARG51317) antibodies are early indications that a cell is undergoing apoptosis.
Target Name	Mitochondria / Caspase Dependant Apoptosis Marker
Alternate Names	Mitochondria/Caspase Dependant Apoptosis Marker antibody; Cytochrome C antibody; Caspase 9 (cleaved) antibody

Properties

Storage instruction	For continuous use, store undiluted antibody at 2-8°C for up to a week. For long-term storage, aliquot and store at -20°C or below. Storage in frost free freezers is not recommended. Avoid repeated freeze/thaw cycles. Suggest spin the vial prior to opening. The antibody solution should be gently mixed before use.
Note	For laboratory research only, not for drug, diagnostic or other use.

Bioinformation

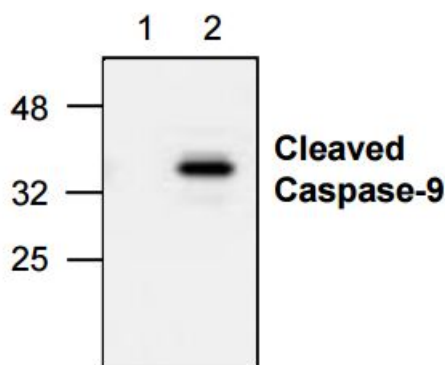
Gene Full Name	Antibody Duo for Mitochondria/Caspase Dependant Apoptosis Marker (Caspase9, Cytochrome c)
Highlight	Related Product: anti-Cytochrome C antibody; anti-Dopamine Transporter antibody;
Research Area	Cancer antibody; Cell Biology and Cellular Response antibody; Cell Death antibody; Metabolism antibody; Signaling Transduction antibody



ARG20006 anti-Cytochrome c antibody WB image

Western Blot: 1. Jurkat cell lysate 2. 3T3 cell lysate stained with anti-Cytochrome c antibody (ARG20006).

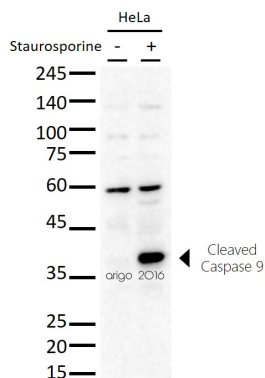
The cytochrome c antibody detects the 12.6 kDa cytochrome c from human, mouse, and rat samples. Jurkat cell lysate, NIH3T3 cell lysate, and rat kidney tissue lysate can be used as positive controls.



ARG20048 anti-Caspase-9 (Active) antibody WB image

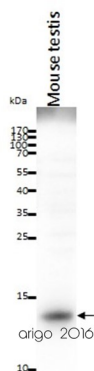
Western Blot: 1. Untreated Jurkat cell lysate 2. Etoposide treated Jurkat cell lysate stained with anti-Caspase 9 active antibody (ARG20048).

The anti-active caspase-9 antibody recognizes only the cleaved caspase-9 (37 kDa). It does not recognize full-length caspase-9 or any other caspases.



ARG20048 anti-Caspase 9 (cleaved) antibody WB image

Western blot: 20 µg of HeLa untreated or treated with Staurosporine and stained with ARG20048 anti-Caspase 9 (cleaved) antibody at 1:500 dilution.



ARG20006 anti-Cytochrome C antibody WB image

Western blot: 20 µg of Mouse testis lysate stained with ARG20006 anti-Cytochrome C antibody at 2 µg/ml dilution.