

ARG30127 Lymphocyte Marker Antibody Duo (CD3, CD19)(IHC/ICC)

Package: 1 pair
Store at: -20°C

Component

Cat. No.	Component Name	Host clonality	Reactivity	Application	Package
ARG52706	anti-CD19 antibody	Rabbit pAb	Hu	IHC-P	250 µl

Summary

Product Description	<p>The CD3 T-cell-co-receptor is a protein complex. In mammals, the complex contains a CD3γ chain, a CD3δ chain, and two CD3ε chains. CD3 is initially expressed in the cytoplasm of pro-thymocytes, the stem cells from which T-cells arise in the thymus. This high specificity, combined with the presence of CD3 at all stages of T-cell development, makes it a useful immunohistochemical marker for T-cells in tissue sections. As like as on T-cells, several surface molecules form the antigen receptor and form a complex on B lymphocytes. The (almost) B cell-specific CD19 phosphoglycoprotein is one of these molecules. CD19 expressed on all stage of B cell, except on the maturation to plasma cells.</p> <p>By using the specific marker CD3 and CD19, this antibody duo is available to identify the population of T-cell or B-cell.</p>
Target Name	Lymphocyte Marker
Alternate Names	Lymphocyte Marker antibody; CD19 antibody; CD3 antibody

Properties

Storage instruction	For continuous use, store undiluted antibody at 2-8°C for up to a week. For long-term storage, aliquot and store at -20°C or below. Storage in frost free freezers is not recommended. Avoid repeated freeze/thaw cycles. Suggest spin the vial prior to opening. The antibody solution should be gently mixed before use.
Note	For laboratory research only, not for drug, diagnostic or other use.

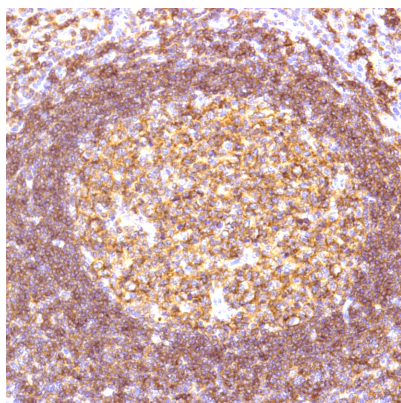
Bioinformation

Gene Full Name	Antibody Duo for Lymphocyte Marker (CD3, CD19)
Research Area	Developmental Biology antibody; Immune System antibody



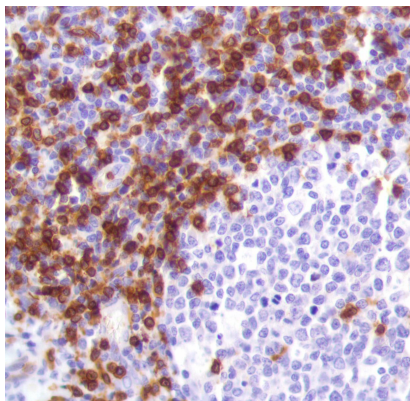
ARG52742 anti-CD3 antibody [SP162] WB image

Western Blot: Jurkate Cell Lysate stained with CD3 antibody [SP162] (ARG52742)



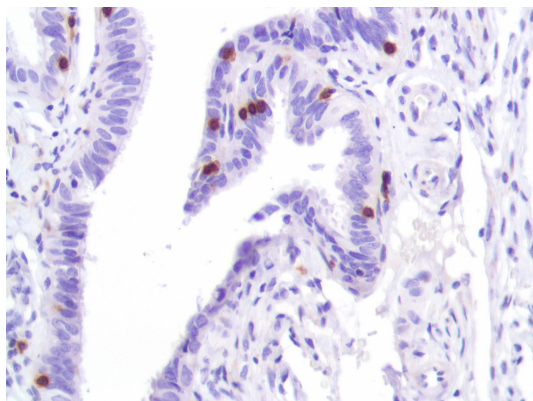
ARG52706 anti-CD19 antibody IHC-P image

Immunohistochemistry: Human Tonsil stained with CD19 antibody (ARG52706)



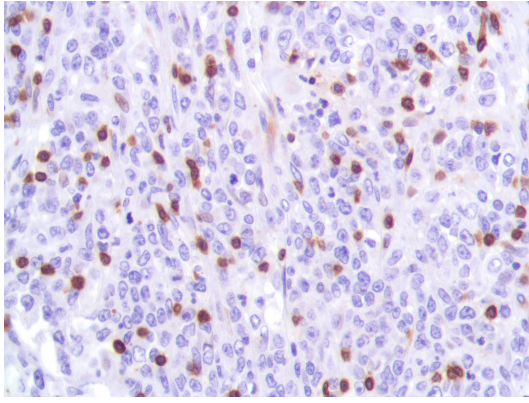
ARG52742 anti-CD3 antibody [SP162] IHC-P image

Immunohistochemistry: Human Tonsil stained with CD3 antibody [SP162] (ARG52742)



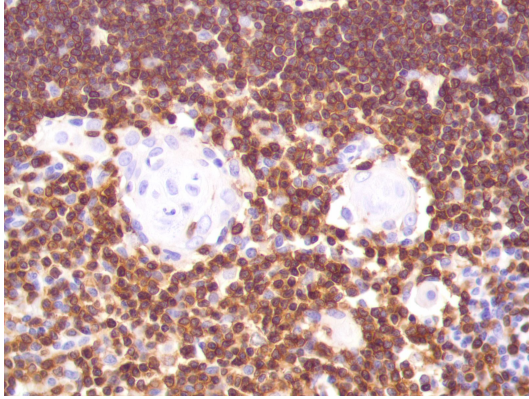
ARG52742 anti-CD3 antibody [SP162] IHC-P image

Immunohistochemistry: Human Fallopian Tube stained with CD3 antibody [SP162] (ARG52742)



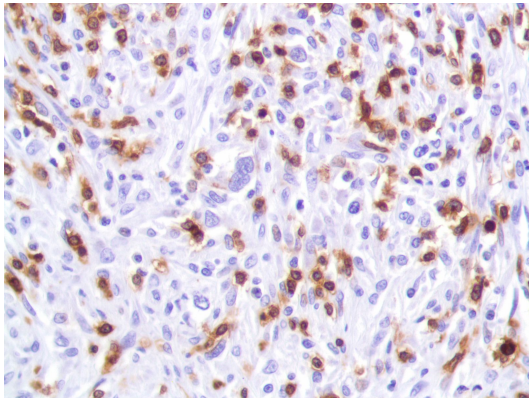
ARG52742 anti-CD3 antibody [SP162] IHC-P image

Immunohistochemistry: Human B-cell lymphoma stained with CD3 antibody [SP162] (ARG52742)



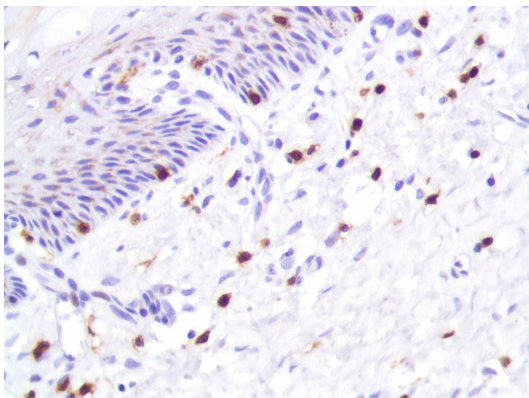
ARG52742 anti-CD3 antibody [SP162] IHC-P image

Immunohistochemistry: Human Thymus stained with CD3 antibody [SP162] (ARG52742)



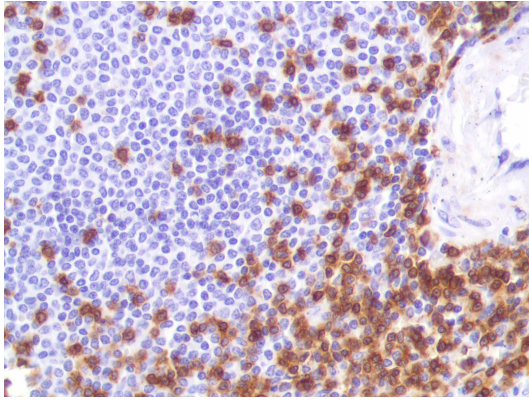
ARG52742 anti-CD3 antibody [SP162] IHC-P image

Immunohistochemistry: Human HK lymphoma stained with CD3 antibody [SP162] (ARG52742)



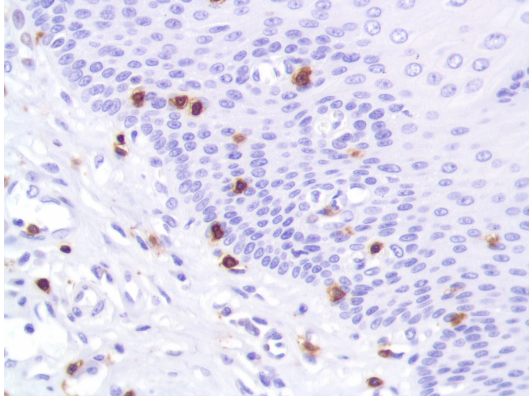
ARG52742 anti-CD3 antibody [SP162] IHC-P image

Immunohistochemistry: Human Cervix stained with CD3 antibody [SP162] (ARG52742)



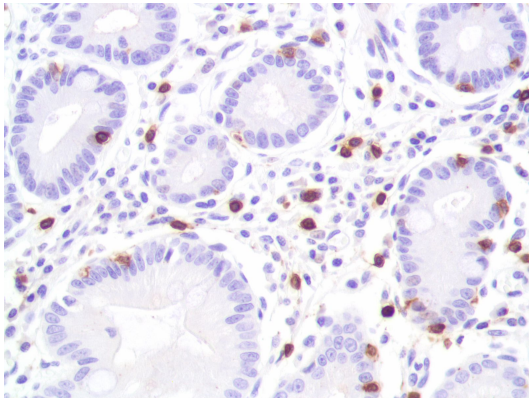
ARG52742 anti-CD3 antibody [SP162] IHC-P image

Immunohistochemistry: Human Spleen stained with CD3 antibody [SP162] (ARG52742)



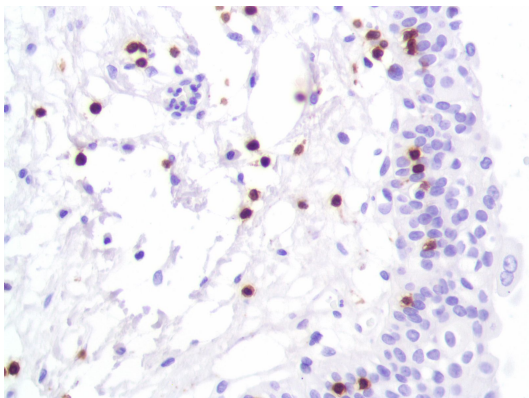
ARG52742 anti-CD3 antibody [SP162] IHC-P image

Immunohistochemistry: Human Esophagus stained with CD3 antibody [SP162] (ARG52742)



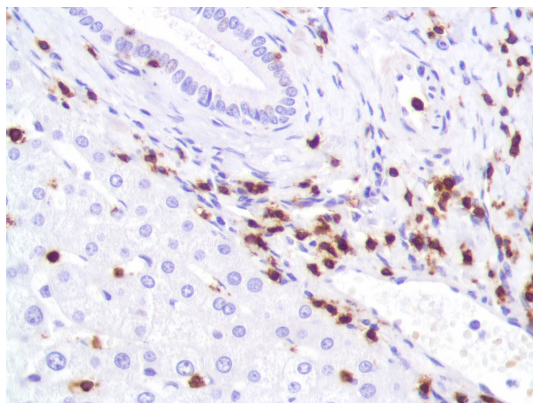
ARG52742 anti-CD3 antibody [SP162] IHC-P image

Immunohistochemistry: Human Colon stained with CD3 antibody [SP162] (ARG52742)



ARG52742 anti-CD3 antibody [SP162] IHC-P image

Immunohistochemistry: Human Bladder stained with CD3 antibody [SP162] (ARG52742)



ARG52742 anti-CD3 antibody [SP162] IHC-P image

Immunohistochemistry: Human Liver stained with CD3 antibody [SP162] (ARG52742)