

## ARG30142 Cardiomyocyte Cell Surface Marker Antibody Panel (Cx43, Desmin, SIRP)

Package: 1 kit  
Store at: -20°C

### Component

Cat. No.	Component Name	Host clonality	Reactivity	Application	Package
ARG52941	anti-Desmin antibody	Rabbit pAb	Hu, Ms, Rat	IHC-P, IP, WB	250 µl
ARG54417	anti-CD172a / SIRP alpha antibody	Rabbit pAb	Hu	WB	25 µg
ARG65351	Goat anti-Rabbit IgG antibody (HRP)	Goat pAb	Rb	ELISA, IHC-P, WB	50 µl

### Summary

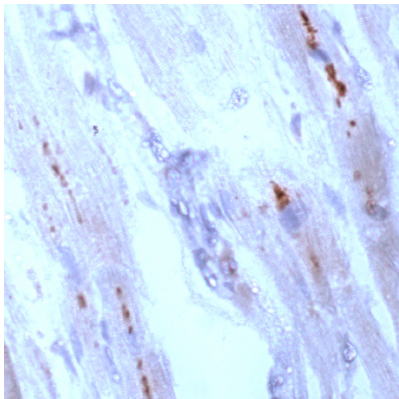
Product Description	<p>Cell surface markers on cardiomyocytes have been very useful for the isolation of cardiomyocytes from a mixed population of cells extracted from tissues, or from cardiomyocytes differentiated from stem cells. Connexin 43 is the main constituent of cardiomyocyte gap junctions. Desmin is the major muscle-specific intermediate filament protein. SIRPA is a receptor-type transmembrane glycoprotein specifically expressed on cardiomyocytes derived from hESCs. This panel is very useful for the study and isolation of cardiomyocytes from a mixed cell population.</p> <p>Nicole C.D. et al. (2011) Nature Biotechnology 29, 1011-1018. Leader, M. et al. (1987) Histopathology 11, 63-72. Rainer Schulz and Gerd Heusch (2004) Cardiovasc Res 62, 335-344.</p>
Target Name	Cardiomyocyte Cell Surface Marker
Alternate Names	Cardiomyocyte Cell Surface Marker antibody; Connexin 43 antibody; Desmin antibody; CD172a / SIRP alpha antibody

### Properties

Storage instruction	For continuous use, store undiluted antibody at 2-8°C for up to a week. For long-term storage, aliquot and store at -20°C or below. Storage in frost free freezers is not recommended. Avoid repeated freeze/thaw cycles. Suggest spin the vial prior to opening. The antibody solution should be gently mixed before use.
Note	For laboratory research only, not for drug, diagnostic or other use.

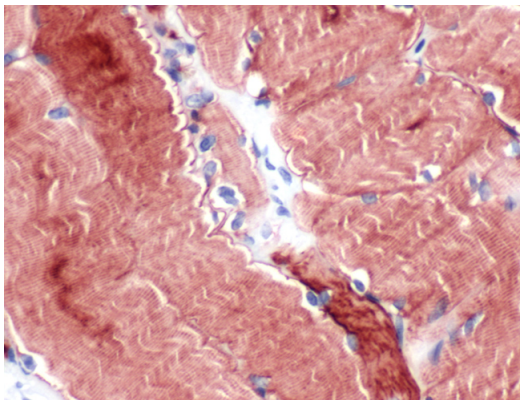
### Bioinformation

Gene Full Name	Antibody Panel for Cardiomyocyte Cell Surface Marker (Cx43, Desmin, SIRP)
Research Area	Cancer antibody; Cell Biology and Cellular Response antibody; Developmental Biology antibody; Immune System antibody; Neuroscience antibody; Signaling Transduction antibody



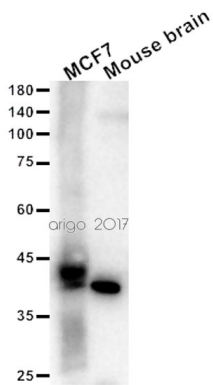
ARG52893 anti-Connexin-43 antibody IHC-P image

Immunohistochemistry: Human Heart stained with ARG52893 anti-GJA1 antibody



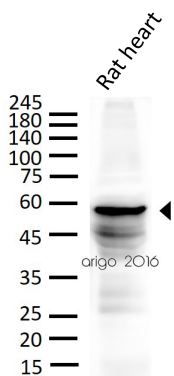
ARG52941 anti-Desmin antibody IHC-P image

Immunohistochemistry: Human Skeletal Muscle stained with ARG52941 anti-Desmin antibody



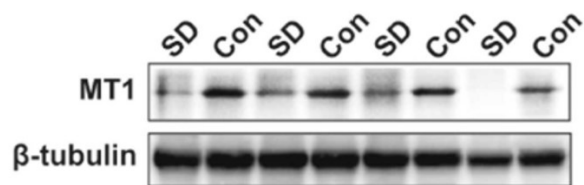
ARG52893 anti-Connexin 43 antibody WB image

Western blot: 20 µg of MCF7 and Mouse brain lysates stained with ARG52893 anti-Connexin 43 antibody at 1:30 dilution.



ARG52941 anti-Desmin antibody WB image

Western blot: 30 µg of Rat heart lysate stained with ARG52941 anti-Desmin antibody at 1:500 dilution.



ARG65351 Goat anti-Rabbit IgG antibody (HRP) WB image

Western blot: Rat placental stained with [ARG57589 anti-MTNR1A antibody](#) at 1:1000 dilution, ARG65351 Goat anti-Rabbit IgG antibody (HRP) at 1:5000 dilution.

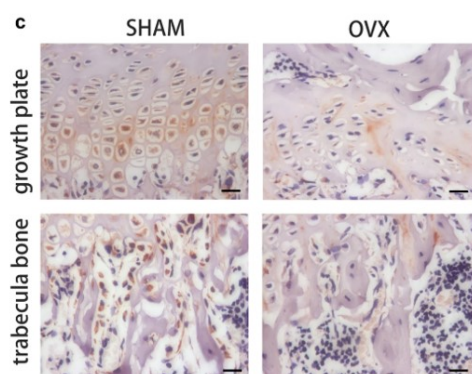
From Jinzhi Li et al. J Reprod Immunol. (2023), [doi: 10.1016/j.jri.2023.104166](#), Fig. 2.B.



ARG65351 Goat anti-Rabbit IgG antibody (HRP) WB image

Western blot: Mouse retina stained with [ARG65693 anti-alpha Tubulin antibody](#) and ARG65351 Goat anti-Rabbit IgG antibody (HRP)

From Xiaoyuan Ye et al. Mol Ther Nucleic Acids. (2024), [doi: 10.1016/j.omtn.2024.102209](#), Fig. 5.D.



ARG65351 Goat anti-Rabbit IgG antibody (HRP) IHC-P image

From Yu-Qian Song et al. J Mol Med (Berl) (2022), [doi: 10.1007/s00109-021-02165-0](#), Fig. 5.c.