

ARG30169 Src Family Protein Tyrosine Kinases Antibody Panel

Package: 1 kit
Store at: -20°C

Component

Cat. No.	Component Name	Host clonality	Reactivity	Application	Package
ARG54712	anti-Src antibody [17AT28]	Mouse mAb	Hu, Ms	ICC/IF, WB	50 µl
ARG62966	anti-CSK antibody [CSK-04]	Mouse mAb	Hu, Ms	ICC/IF, IP, WB	50 µl
ARG54079	anti-Fyn antibody	Mouse mAb	Hu, Ms, Rat, Mk	ICC/IF, WB	50 µl
ARG63066	anti-Lyn antibody [LYN-01]	Mouse mAb	Hu, Ms, Rat	ICC/IF, IP, WB	50 µg
ARG63058	anti-Lck antibody [LCK-01]	Mouse mAb	Hu	CyTOF®-candidate, FACS, ICC/IF, IP, WB	50 µg
ARG65350	Goat anti-Mouse IgG antibody (HRP)	Goat pAb	Ms	ELISA, IHC-P, WB	50 µl

Summary

Product Description	<p>The Src family of protein tyrosine kinases, which includes Src, Lyn, Fyn, Yes, Lck, Blk, and Hck, are important in the regulation of growth and differentiation of eukaryotic cells. Src activity is regulated by tyrosine phosphorylation at two sites, but with opposing effects. While phosphorylation at Tyr416 in the activation loop of the kinase domain upregulates enzyme activity, phosphorylation at Tyr527 in the carboxy-terminal tail by Csk renders the enzyme less active.</p> <p>The kinase Fyn plays a role in T-cell receptor signaling and also helps in memory formation and adhesion mediated signaling. Lymphocyte specific kinase Lck is essential in the differentiation and activation of T-cells. Hematopoietic Lyn kinase, also phosphorylated by Csk, is involved in the regulation of B-cell function, migration and development. The ubiquitously expressed kinase Yes acts downstream of several different cell surface receptors, including G-protein-coupled receptors, and is involved in the regulation of angiogenesis, the cell cycle and cell adhesion.</p> <p>Thomas, S.M. and Brugge, J.S. (1997) Annu Rev Cell Dev Biol 13, 513-609. Hunter, T. (1987) Cell 49, 1-4. Isosaka, T. et al. (2008) Eur. J. Neurosci. 28, 973-981. Seo, S. et al. (2001) J. Immunol. 166, 3710-3716. Werdich, X.Q. and Penn, J.S. (2005) Angiogenesis 8, 315-326.</p>
Target Name	Src Family Protein Tyrosine Kinases
Alternate Names	Src Family Protein Tyrosine Kinases antibody; Fyn antibody; Src antibody; CSK antibody; Lck antibody; Lyn antibody

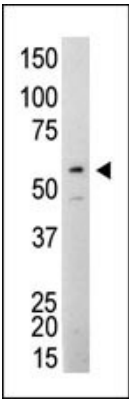
Properties

Storage instruction	For continuous use, store undiluted antibody at 2-8°C for up to a week. For long-term storage, aliquot and store at -20°C or below. Storage in frost free freezers is not recommended. Avoid repeated freeze/thaw cycles. Suggest spin the vial prior to opening. The antibody solution should be gently mixed before use.
Note	For laboratory research only, not for drug, diagnostic or other use.

Bioinformation

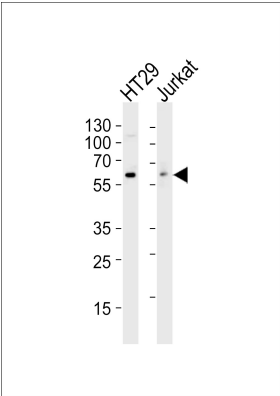
Gene Full Name	Antibody Panel for Src Family Protein Tyrosine Kinases
Highlight	Related Product: anti-Src antibody ; anti-CSK antibody ; anti-Fyn antibody ; anti-Lyn antibody ; anti-Lck antibody ;
Research Area	Cancer antibody; Gene Regulation antibody; Immune System antibody; Metabolism antibody; Neuroscience antibody; Signaling Transduction antibody

Images



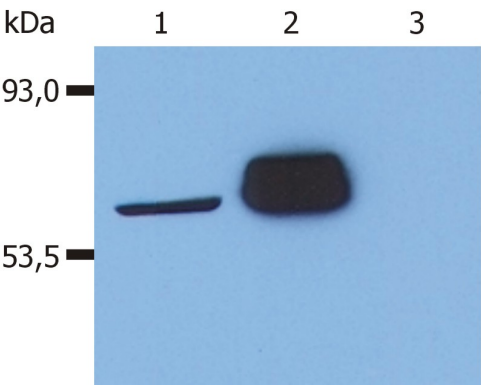
ARG54712 anti-SRC Antibody WB image

Western blot: Jurkat cell lysate stained with ARG54712 anti-SRC antibody.



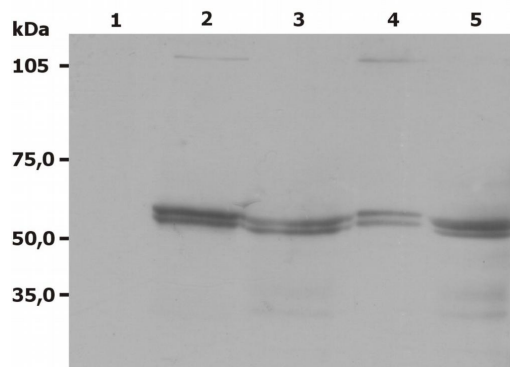
ARG54712 anti-SRC Antibody WB image

Western blot: 35 µg of HT29, Jurkat cell line lysates (from left to right) stained with ARG54712 anti-SRC antibody at 1:1000 dilution.



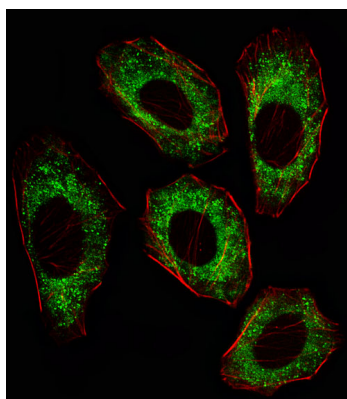
Monoclonal antibody clone LCK-01 Western Blot image

Western Blot: Lane 1: J. CaM-1.6 cell line (a mutant derivate of the JURKAT cell line) transfected with Lck; Lane 2: HEK-293T cell line transfected with Lck; Lane 3: HEK-293T cell line (non-transfected) stained with the monoclonal antibody clone LCK-01.



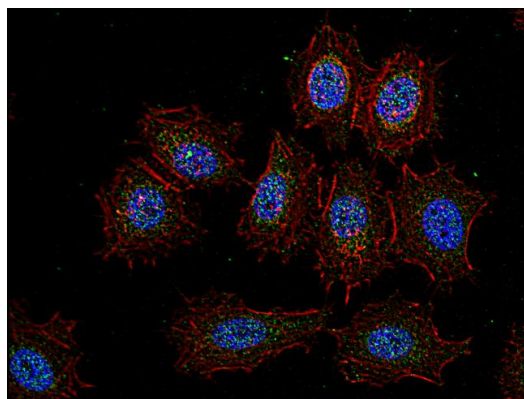
Monoclonal antibody clone LYN-01 WB image

Western Blot: 1. Negative control, 2. RBL rat basophilic leukemia cell lysate, 3. Jurkat cell lysate, 4. A431 cell lysate, 5. U-937 cell lysate stained with antibody clone LYN-01



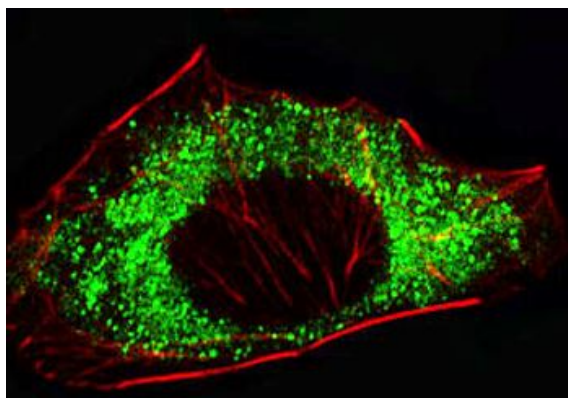
ARG54712 anti-SRC Antibody IF image

Immunofluorescence: A549 cell stained with ARG54712 anti-SRC antibody. A549 cells were fixed with 4% PFA (20 min), permeabilized with Triton X-100 (0.1%, 10 min), then incubated with SRC primary antibody (1:25, 1 h at 37°C). Cytoplasmic actin was counterstained with Alexa Fluor® 555 (red) conjugated Phalloidin (7units/ml, 1 h at 37°C). SRC immunoreactivity is localized to Cytoplasm significantly.



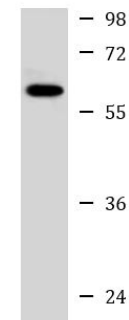
Monoclonal antibody clone CSK-04 ICC/IF image

Immunofluorescence: HeLa cells stained with clone CSK-04 (green) Actin cytoskeleton was stained by phalloidin (red) and cell nuclei were stained with DAPI (blue).



ARG54712 anti-SRC Antibody ICC/IF image

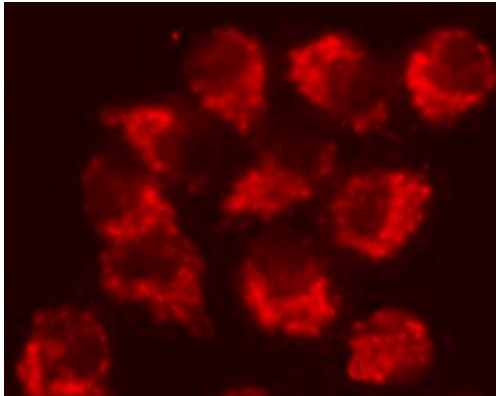
Immunofluorescence: A549 cells were fixed with 4% PFA (20 min), permeabilized with Triton X-100 (0.1%, 10 min), then stained with ARG54712 anti-SRC antibody (1:25, 1 h at 37°C). Cytoplasmic actin was counterstained with Alexa Fluor® 555 (red) conjugated Phalloidin (7 units/ml, 1 h at 37°C).



HT29

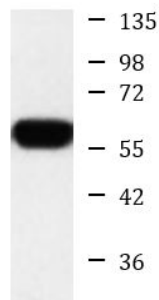
ARG54712 anti-SRC Antibody WB image

Western blot: 35 µg of HT29 cell lysate stained with ARG54712 anti-SRC antibody at 1:1000 dilution.



ARG54079 anti-Fyn antibody ICC/IF image

Immunofluorescence: HeLa cells fixed with -20°C Methanol and stained with ARG54079 anti-Fyn antibody at 1:50 dilution.

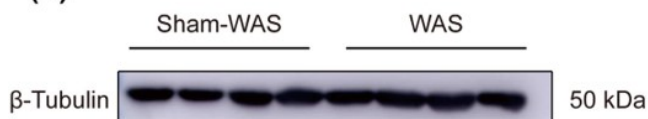


Jurkat

ARG54079 anti-Fyn antibody WB image

Western blot: Jurkat cell lysate stained with ARG54079 anti-Fyn antibody at 1:500 dilution.

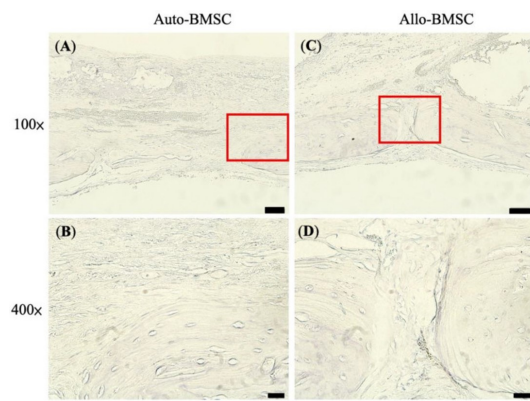
(D)



ARG65350 Goat anti-Mouse IgG antibody (HRP) WB image

Western blot: Rat basolateral amygdala stained with [ARG62347 anti-beta Tubulin antibody \[BT7R\]](#) at 1:1000 dilution, ARG65350 Goat anti-Mouse IgG antibody (HRP) at 1:5000 dilution.

From Guang-Bing Duan et al. CNS Neurosci Ther. (2024), [doi: 10.1111/cns.14611](#), Fig. 4.D.



ARG65350 Goat anti-Mouse IgG antibody (HRP) IHC-P image

From Cheng-Feng Chu et al. J Pers Med. (2021), [doi: 10.3390/jpm11121326](https://doi.org/10.3390/jpm11121326), Fig. 6.