

ARG30233 Phospho Bcl XL Antibody Duo (Total, pS62)

Package: 1 pair
Store at: -20°C

Component

Cat. No.	Component Name	Host clonality	Reactivity	Application	Package
ARG51569	anti-Bcl XL phospho (Ser62) antibody	Rabbit pAb	Hu, Ms, Rat	ICC/IF, IHC-P, WB	50 µl
ARG51057	anti-Bcl XL antibody	Rabbit pAb	Hu, Ms, Rat	WB	50 µl

Summary

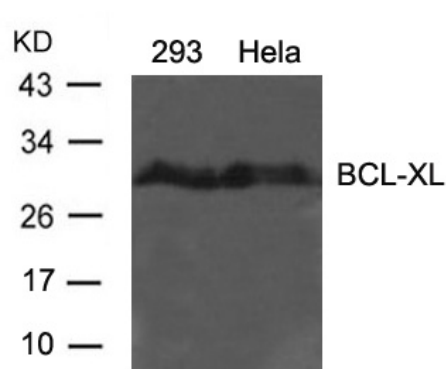
Product Description	Members of the Bcl family of proteins are important regulators of programmed cell death pathways with individual members that can suppress (eg Bcl2, Bcl-XL) or promote (eg Bax, Bad) apoptosis. BCL-XL is a transmembrane molecule in the mitochondria, acts as a pro-survival protein by preventing the release of mitochondrial contents such as Cytochrome C which would lead to caspase activation. Ser62 residue of BCL-XL protein was found to be the major site of BCL-XL protein phosphorylation. This phosphorylation induced by microtubule inhibitors plays a key pro-apoptotic role in part by disabling the ability of Bcl-xL to bind Bax. Upreti et al. 2008. J Biol Chem 283(51): 35517
Target Name	Bcl XL
Alternate Names	Phospho Bcl XL antibody; Bcl XL antibody; Bcl XL phospho (Ser62) antibody

Properties

Storage instruction	For continuous use, store undiluted antibody at 2-8°C for up to a week. For long-term storage, aliquot and store at -20°C or below. Storage in frost free freezers is not recommended. Avoid repeated freeze/thaw cycles. Suggest spin the vial prior to opening. The antibody solution should be gently mixed before use.
Note	For laboratory research only, not for drug, diagnostic or other use.

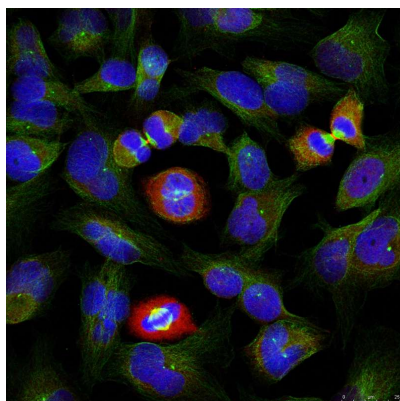
Bioinformation

Gene Full Name	Phospho Bcl XL Antibody Duo (Total, pS62)
Highlight	Related Product: anti-Bcl XL phospho (Ser62) antibody; anti-Bcl XL antibody;
Research Area	Cancer antibody; Cell Biology and Cellular Response antibody; Cell Death antibody; Metabolism antibody; Signaling Transduction antibody



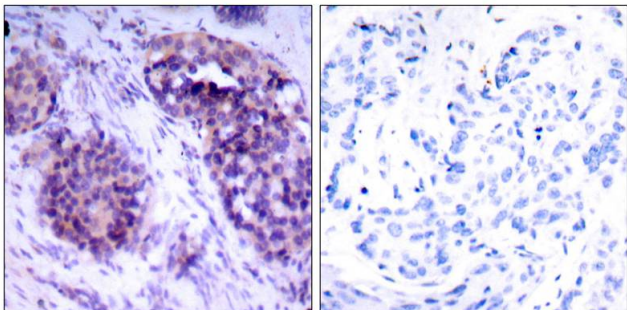
ARG51057 anti-BCL-XL antibody WB image

Western Blot: extracts from 293 and HeLa cells stained with anti-BCL-XL antibody ARG51057.



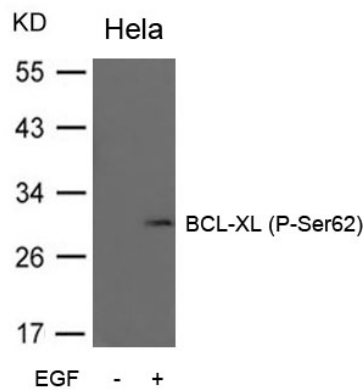
ARG51569 anti-BCL-XL phospho (Ser62) antibody ICC/IF image

Immunofluorescence: methanol-fixed HeLa cells stained with anti-BCL-XL (phospho Ser62) antibody ARG51569, Red).



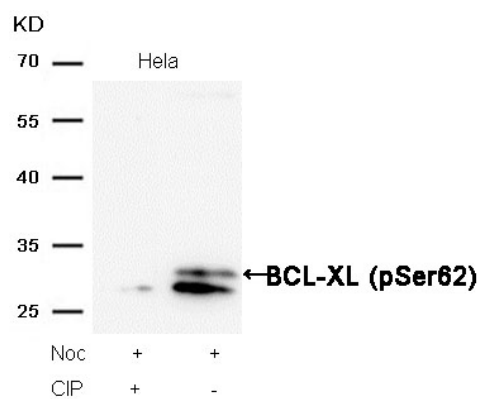
ARG51569 anti-BCL-XL phospho (Ser62) antibody IHC-P image

Immunohistochemistry: paraffin-embedded human breast carcinoma tissue stained with anti-BCL-XL (phospho Ser62) antibody ARG51569).



ARG51569 anti-BCL-XL phospho (Ser62) antibody WB image

Western Blot: extracts from HeLa cells untreated or treated with EGF stained with anti-BCL-XL (phospho Ser62) antibody ARG51569.



ARG51569 anti-BCL-XL phospho (Ser62) antibody WB image

Western Blot: extracts from HeLa cells, treated with Noc or calf intestinal phosphatase (CIP), stained with anti-BCL-XL (phospho Ser62) antibody ARG51569.