

ARG30258 Loading Controls for Whole Cell Lysate Antibody Panel

Package: 1 kit
Store at: -20°C

Component

Cat. No.	Component Name	Host clonality	Reactivity	Application	Package
ARG65714	anti-Vinculin antibody	Rabbit pAb	Hu, Ms, Rat	WB	25 µl
ARG65693	anti-alpha Tubulin antibody	Rabbit pAb	Hu, Ms, Rat	FACS, ICC/IF, IHC-P, WB	25 µl
ARG65683	anti-beta Actin antibody	Rabbit pAb	Hu, Ms, Rat, Rb, Sheep	IHC-P, WB	25 µg
ARG65680	anti-GAPDH antibody	Rabbit pAb	Hu, Ms, Rat	ICC/IF, IHC-P, WB	25 µl
ARG65351	Goat anti-Rabbit IgG antibody (HRP)	Goat pAb	Rb	ELISA, IHC-P, WB	50 µl

Summary

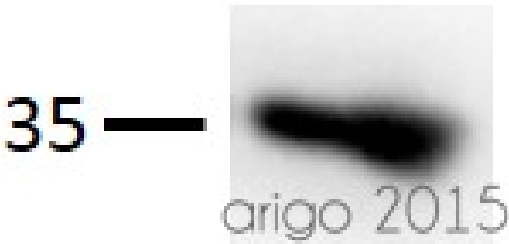
Target Name	Loading Controls for Whole Cell Lysate
Alternate Names	Loading Controls for Whole Cell Lysate antibody; GAPDH antibody; beta Actin antibody; alpha Tubulin antibody; Vinculin antibody

Properties

Storage instruction	For continuous use, store undiluted antibody at 2-8°C for up to a week. For long-term storage, aliquot and store at -20°C or below. Storage in frost free freezers is not recommended. Avoid repeated freeze/thaw cycles. Suggest spin the vial prior to opening. The antibody solution should be gently mixed before use.
Note	For laboratory research only, not for drug, diagnostic or other use.

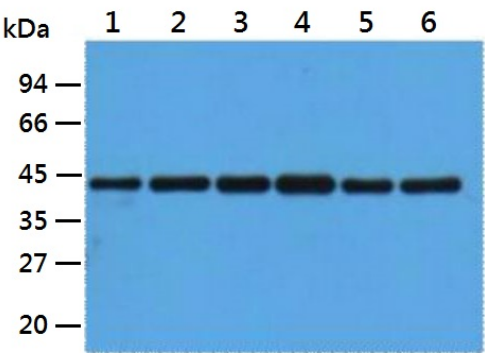
Bioinformation

Gene Full Name	Antibody Panel for Loading Controls for Whole Cell Lysate
Highlight	Related Product: anti-Vinculin antibody; anti-alpha Tubulin antibody; anti-beta Actin antibody; anti-GAPDH antibody; Organelle Marker; Loading Control;
Research Area	Cancer antibody; Cell Biology and Cellular Response antibody; Controls and Markers antibody; Immune System antibody; Metabolism antibody; Signaling Transduction antibody



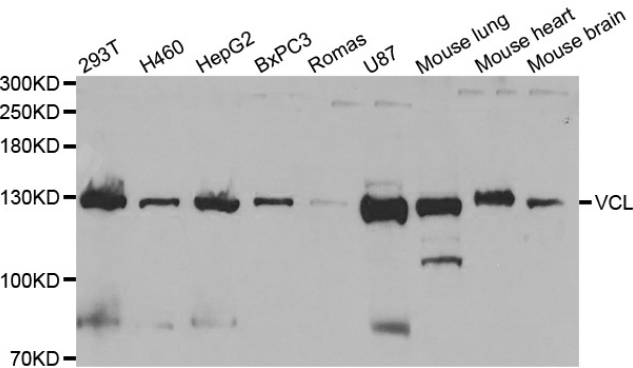
ARG65680 anti-GAPDH antibody WB image

Western blot: 30 µg of HeLa cell lysate stained with ARG65680 anti-GAPDH antibody at 1:500 dilution.



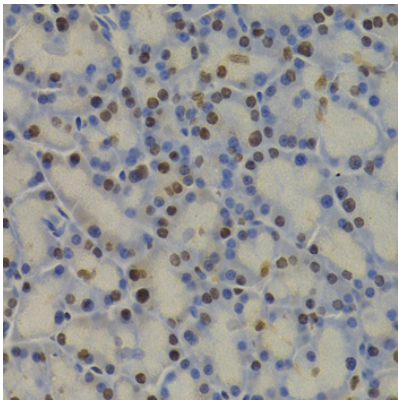
ARG65683 anti-beta Actin antibody WB image

Western blot: 1) HepG2, 2) Rat liver, 3) Mouse kidney, 4) Rabbit testis, 5) Sheep lung, and 6) 293T lysates stained with ARG65683 anti-beta Actin antibody at 1:5000 dilution.



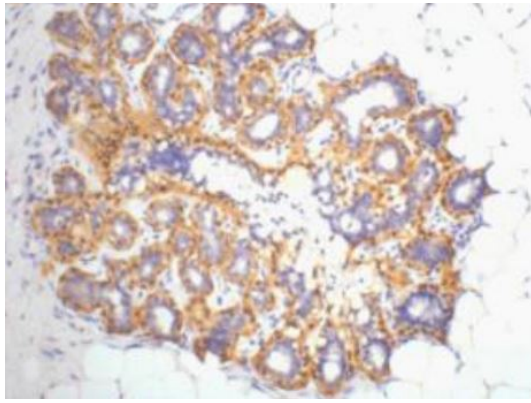
ARG65714 anti-Vinculin antibody WB image

Western blot: extracts of various cell lines stained with ARG65714 anti-Vinculin antibody.



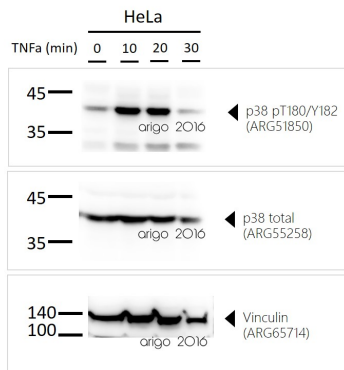
ARG65680 anti-GAPDH antibody IHC-P image

Immunohistochemistry: paraffin-embedded Rat pancreas stained with ARG65680 anti-GAPDH antibody at 1:100 dilution (400x lens).



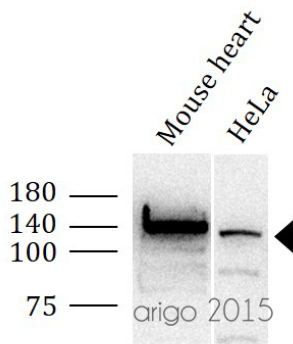
ARG65683 anti-beta Actin antibody IHC-P image

Immunohistochemistry: Human ovary tissue stained with ARG65683 anti-beta Actin antibody at 1:200 dilution.



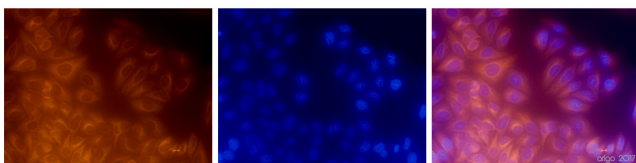
ARG65714 anti-Vinculin antibody WB image

Western blot: 30 µg of HeLa treated with TNFα at 0, 10, 20, and 30 min. The blots stained with [ARG51850](#) anti-P38 MAPK phospho (Thr180/Tyr182) antibody, [ARG55258](#) anti-p38 MAPK antibody, and [ARG65714](#) anti-Vinculin antibody.



ARG65714 anti-Vinculin antibody WB image

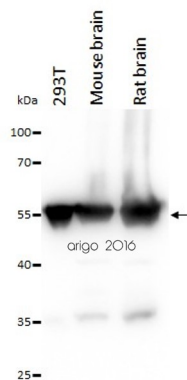
Western blot: 30 µg of Mouse heart, and HeLa cell lysate stained with ARG65714 anti-Vinculin antibody at 1:500 dilution.



ARG65693 anti-alpha Tubulin antibody ICC/IF image

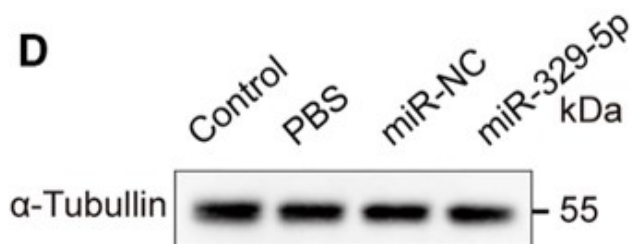
Immunofluorescence: 100% Methanol fixed (RT, 10 min) HeLa cells stained with ARG65693 anti-alpha Tubulin antibody at 1:200 dilution. Left: primary antibody (orange). Middle: DAPI (blue). Right: Merge.

Secondary antibody: ARG21917 Goat anti-Rabbit IgG antibody (TRITC)



ARG65693 anti-alpha Tubulin antibody WB image

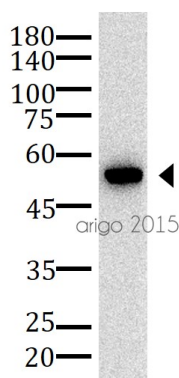
Western blot: 20 µg of 293T, Mouse brain and Rat brain lysates stained with ARG65693 anti-alpha Tubulin antibody at 1:10000 dilution.



ARG65693 anti-alpha Tubulin antibody WB image

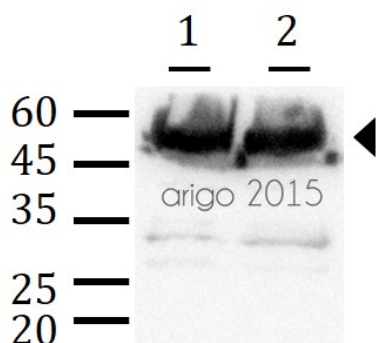
Western blot: Mouse retina stained with ARG65693 anti-alpha Tubulin antibody and [ARG65351 Goat anti-Rabbit IgG antibody \(HRP\)](#).

From Xiaoyuan Ye et al. Mol Ther Nucleic Acids. (2024), [doi: 10.1016/j.omtn.2024.102209](#), Fig. 5.D.



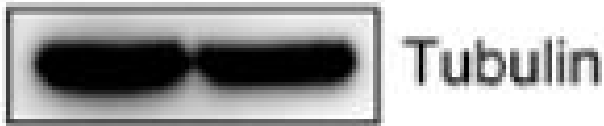
ARG65693 anti-alpha Tubulin antibody WB image

Western blot: 30 µg of HeLa cell lysate stained with ARG65693 anti-alpha Tubulin antibody at 1:5000 dilution.



ARG65693 anti-alpha Tubulin antibody WB image

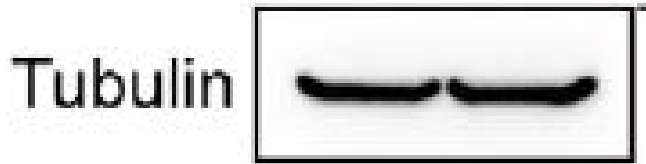
Western blot: 30 µg of 1) Mouse brain, and 2) Rat brain lysates stained with ARG65693 anti-alpha Tubulin antibody at 1:500 dilution.



ARG65693 anti-alpha Tubulin antibody WB image

Western blot: A549 cells stained with ARG65693 anti-alpha Tubulin antibody at 1:10000 dilution.

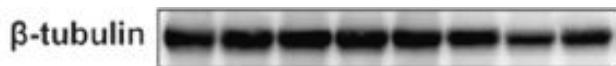
From Youwei Huang et al. Oncol Rep (2022), [doi: 10.3892/or.2022.8396](https://doi.org/10.3892/or.2022.8396), Fig. 4. A.



ARG65693 anti-alpha Tubulin antibody WB image

Western blot: HCT116 cells stained with ARG65693 anti-alpha Tubulin antibody.

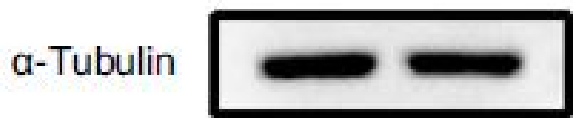
From Fang Wang et al. Cell Rep (2023), [doi: 10.1016/j.celrep.2023.113318](https://doi.org/10.1016/j.celrep.2023.113318), Fig. 3. A.



ARG65693 anti-alpha Tubulin antibody WB image

Western blot: Rat sample stained with ARG65693 anti-alpha Tubulin antibody at 1:5000 dilution.

From Jinzhi Li et al. J Reprod Immunol (2023), [doi: 10.1016/j.jri.2023.104166](https://doi.org/10.1016/j.jri.2023.104166), Fig. 2. B.



ARG65693 anti-alpha Tubulin antibody WB image

Western blot: Glioma cells stained with ARG65693 anti-alpha Tubulin antibody at 1:5000 dilution.

From Xueqin Chen et al. Nat Commun (2023), [doi: 10.1038/s41467-023-42545-3](https://doi.org/10.1038/s41467-023-42545-3), Fig. 2. D.



ARG65693 anti-alpha Tubulin antibody WB image

Western blot: HCT116 and SF763 cells stained with ARG65693 anti-alpha Tubulin antibody at 1:10000 dilution.

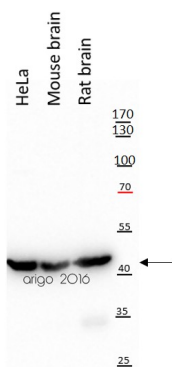
From Yuqing Yang et al. Oncol Rep (2024), [doi: 10.3892/or.2024.8813](https://doi.org/10.3892/or.2024.8813), Fig. 6. B.



ARG65693 anti-alpha Tubulin antibody WB image

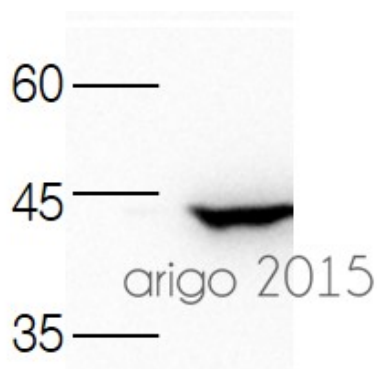
Western blot: GBM cells stained with ARG65693 anti-alpha Tubulin antibody.

From Jialuo Mai et al. Mol Oncol (2019), [doi: 10.1002/1878-0261.12525](https://doi.org/10.1002/1878-0261.12525), Fig. 2. D.



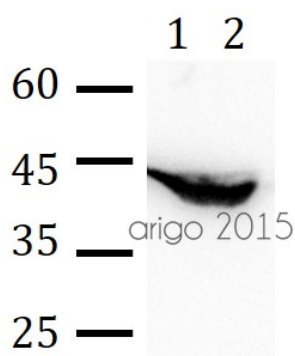
ARG65683 anti-beta Actin antibody WB image

Western blot: 20 µg of HeLa, Mouse brain and Rat brain lysates stained with ARG65683 anti-beta Actin antibody at 1:10000 dilution.



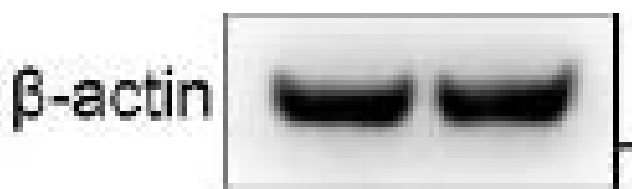
ARG65683 anti-beta Actin antibody WB image

Western blot: 30 µg of 293T lysate stained with ARG65683 anti-beta Actin antibody at 1:3000 dilution.



ARG65683 anti-beta Actin antibody WB image

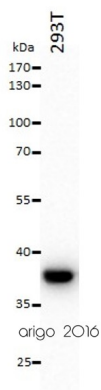
Western blot: 30 µg of 1) Rat brain, and 2) Mouse liver lysate stained with ARG65683 anti-beta Actin antibody at 1:3000 dilution.



ARG65683 anti-beta Actin antibody WB image

Western blot: HCT116 cells stained with ARG65683 anti-beta Actin antibody.

From Fang Wang et al. Cell Rep (2023), [doi: 10.1016/j.celrep.2023.113318](https://doi.org/10.1016/j.celrep.2023.113318), Fig. S2. A.



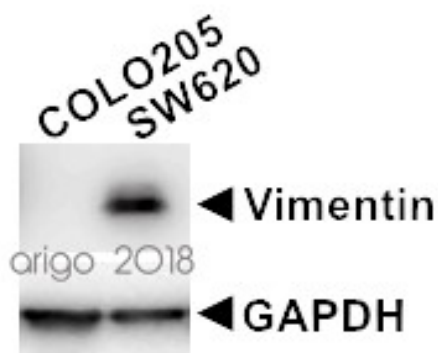
ARG65680 anti-GAPDH antibody WB image

Western blot: 20 µg of 293T cell lysate stained with ARG65680 anti-GAPDH antibody at 1:10000 dilution.



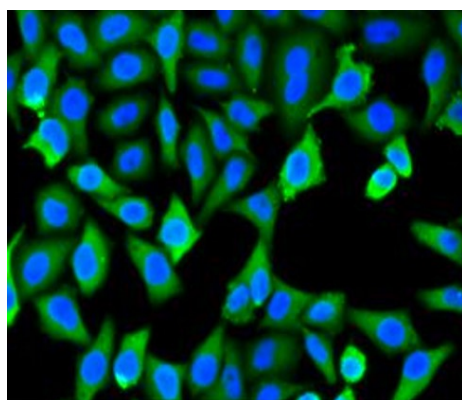
ARG65680 anti-GAPDH antibody WB image

Western blot: 20 µg of 22RV1 and DU145 cell lysates stained with [ARG66302](#) anti-Vimentin antibody [SQab1859] at 1:2000 dilution and ARG65680 anti-GAPDH antibody at 1:10000 dilution.



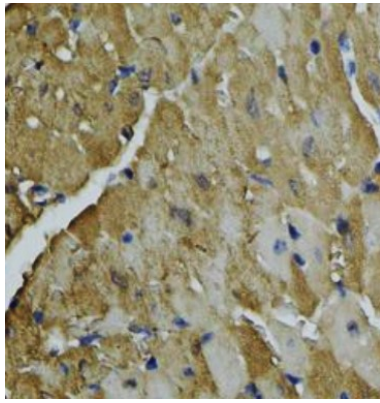
ARG65680 anti-GAPDH antibody WB image

Western blot: 20 µg of COLO205 and SW620 cell lysates stained with [ARG66302](#) anti-Vimentin antibody [SQab1859] at 1:2000 dilution and ARG65680 anti-GAPDH antibody at 1:10000 dilution.



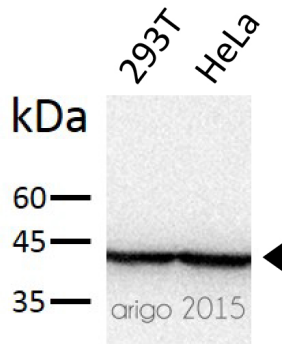
ARG65680 anti-GAPDH antibody ICC/IF image

Immunofluorescence: MCF-7 stained with ARG65680 anti-GAPDH antibody. Blue: DAPI for nuclear staining.



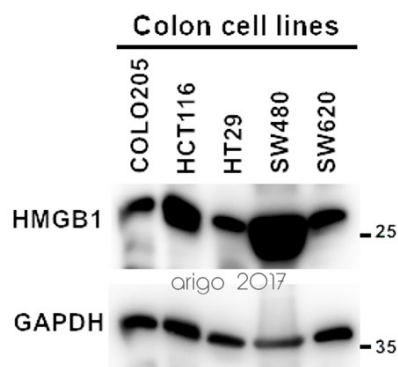
ARG65680 anti-GAPDH antibody IHC-P image

Immunohistochemistry: Paraffin-embedded Mouse heart stained with ARG65680 anti-GAPDH antibody at 1:100 dilution.



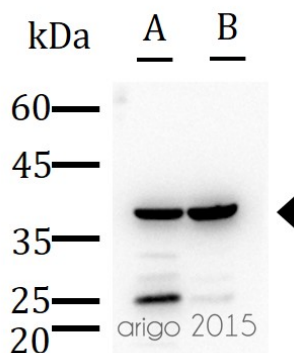
ARG65680 anti-GAPDH antibody WB image

Western blot: 20 µg of 293T and HeLa cell lysate stained with ARG65680 anti-GAPDH antibody at 1:3000 dilution.



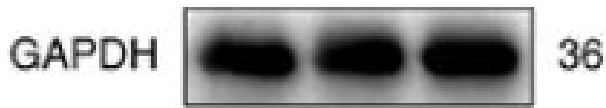
ARG65680 anti-GAPDH antibody WB image

Western blot: 20 µg of COLO205, HCT116, HT29, SW480 and SW620 cell lysates stained with ARG10756 anti-HMGB1 antibody [1F3] (1:2000) and ARG65680 anti-GAPDH antibody (1:10000).



ARG65680 anti-GAPDH antibody WB image

Western blot: 30 µg of 1) MDA-MB-231, and 2) MCF-7 lysates stained with ARG65680 anti-GAPDH antibody at 1:5000 dilution.



ARG65680 anti-GAPDH antibody WB image

Western blot: A549 cells stained with ARG65680 anti-GAPDH antibody at 1:10000 dilution.

From Youwei Huang et al. Oncol Rep (2022), [doi: 10.3892/or.2022.8396](https://doi.org/10.3892/or.2022.8396), Fig. 4. C.



ARG65680 anti-GAPDH antibody WB image

Western blot: Patient-derived GBM cells stained with ARG65680 anti-GAPDH antibody at 1:5000 dilution.

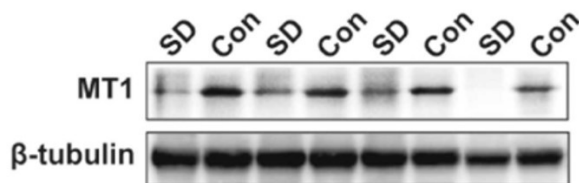
From Xueqin Chen et al. Nat Commun (2023), [doi: 10.1038/s41467-023-42545-3](https://doi.org/10.1038/s41467-023-42545-3), Fig. 7. A.



ARG65680 anti-GAPDH antibody WB image

Western blot: CRC cell lines stained with ARG65680 anti-GAPDH antibody at 1:10000 dilution.

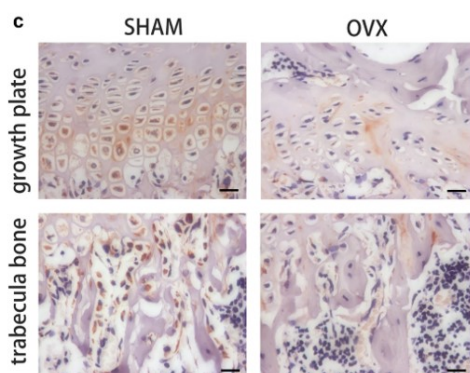
From Yuqing Yang et al. Oncol Rep (2024), [doi: 10.3892/or.2024.8813](https://doi.org/10.3892/or.2024.8813), Fig. 4. A.



ARG65351 Goat anti-Rabbit IgG antibody (HRP) WB image

Western blot: Rat placental stained with [ARG57589 anti-MTNR1A antibody](https://doi.org/10.1016/j.jri.2023.104166) at 1:1000 dilution, ARG65351 Goat anti-Rabbit IgG antibody (HRP) at 1:5000 dilution.

From Jinzhi Li et al. J Reprod Immunol. (2023), [doi: 10.1016/j.jri.2023.104166](https://doi.org/10.1016/j.jri.2023.104166), Fig. 2.B.



ARG65351 Goat anti-Rabbit IgG antibody (HRP) IHC-P image

From Yu-Qian Song et al. J Mol Med (Berl) (2022), [doi: 10.1007/s00109-021-02165-0](https://doi.org/10.1007/s00109-021-02165-0), Fig. 5.c.