

ARG30301 Neurite Marker Antibody Duo

Package: 1 pair
Store at: -20°C

Component

Cat. No.	Component Name	Host clonality	Reactivity	Application	Package
ARG52328	anti-MAP2 antibody	Chicken pAb	Bov, Dog, Hu, Marmoset, Ms, Rat, Sheep	ICC/IF, IHC-P, IHC-Fr, IHC-FoFr, WB	50 µl
ARG62683	anti-beta III Tubulin antibody [TU-20]	Mouse mAb	Hu, Ms, Rat, Dog, Pig	FACS, ICC/IF, IHC-Fr, IHC-P, WB	50 µg

Summary

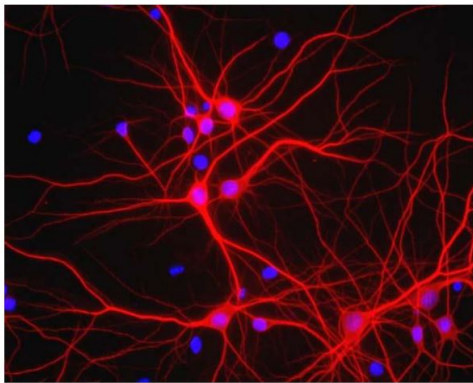
Product Description	<p>Neurites refer to projections from the soma of a neuron. The projection can be either an axon or a dendrite. Axons and dendrites are molecularly and functionally distinct, the slender axon is required for information transmission to other cells, whereas the branched dendrites are responsible for receiving electrochemical stimuli from other neurons. Establishment of the axon/dendrite polarity is critical for the neuronal functions.</p> <p>beta III Tubulin antibody is a well-known axonal marker and MAP2 antibody is excellent for staining dendrites. arigo's Neurite Marker Antibody Duo comprises beta III Tubulin and MAP2 antibodies and is an excellent for studying neuronal differentiation. This antibody Duo can be also used as a neuron marker duo for labeling neuronal cells.</p> <p>Related news: Astrocyte-to-neuron conversion for Parkinson's disease treatment</p>
Target Name	Neurite Marker
Alternate Names	Neurite Marker antibody; MAP2 antibody; beta III Tubulin antibody

Properties

Storage instruction	For continuous use, store undiluted antibody at 2-8°C for up to a week. For long-term storage, aliquot and store at -20°C or below. Storage in frost free freezers is not recommended. Avoid repeated freeze/thaw cycles. Suggest spin the vial prior to opening. The antibody solution should be gently mixed before use.
Note	For laboratory research only, not for drug, diagnostic or other use.

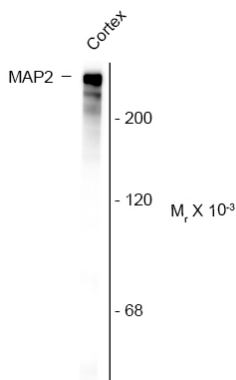
Bioinformation

Gene Full Name	Antibody Duo for Neurite Marker
Highlight	<p>Related Product:</p> <p>anti-MAP2 antibody;</p> <p>anti-beta III Tubulin antibody;</p>



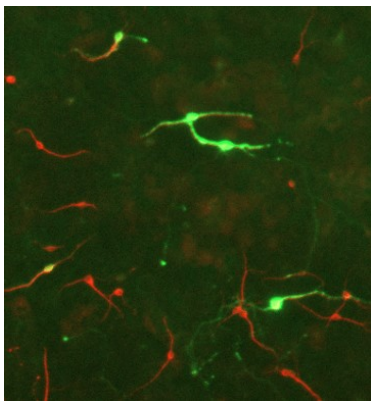
ARG52328 anti-MAP2 antibody ICC/IF image

Immunofluorescence: Mixed neuron/glia cultures. The perikarya and dendrites of neurons are strongly and specifically stained with ARG52328 anti-MAP2 antibody (red). Cell nuclei are visualized with DAPI DNA stain.



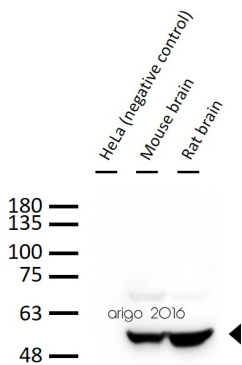
ARG52328 anti-MAP2 antibody WB image

Western blot: Rat cortex lysate stained with ARG52328 anti-MAP2 antibody showing specific immunolabeling of the ~ 280 kDa MAP2 protein.



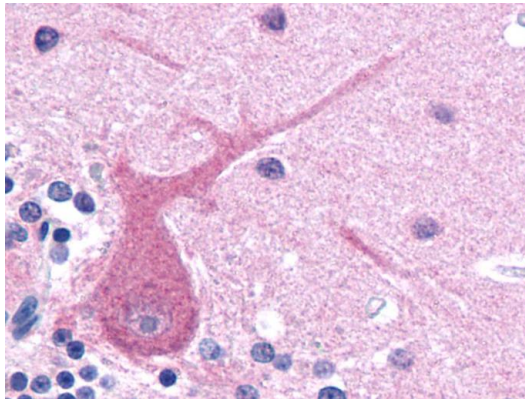
ARG52328 anti-MAP2 antibody ICC/IF image

Immunofluorescence: E17 Rat midbrain mixed neuronal cultures stained with [ARG52461](#) anti-Tyrosine Hydroxylase antibody (green) and ARG52328 anti-MAP2 antibody (red).



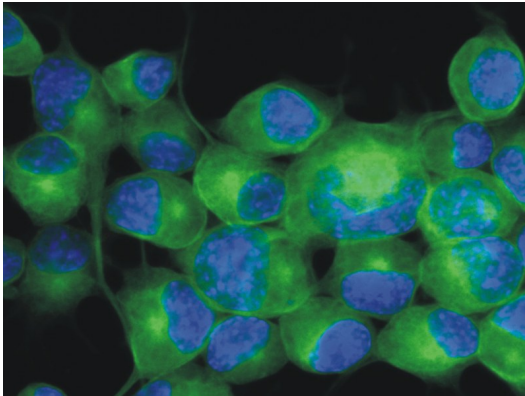
ARG62683 anti-beta III Tubulin antibody [TU-20] WB image

Western blot: 30 µg of 1) HeLa (negative control), 2) Mouse brain, and 3) Rat brain lysate stained with ARG62683 anti-beta III Tubulin antibody [TU-20] at 1:1000 dilution.



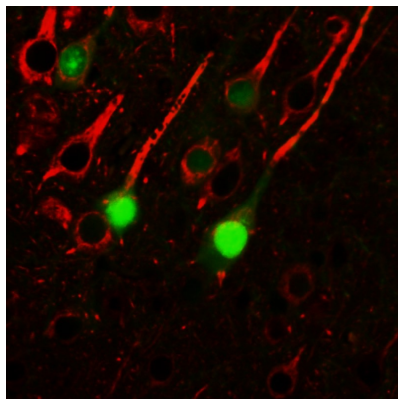
ARG62683 anti-beta III Tubulin antibody [TU-20] IHC-P image

Immunohistochemistry: Paraffin-embedded Human brain tissue stained with ARG62683 anti-beta III Tubulin antibody [TU-20].



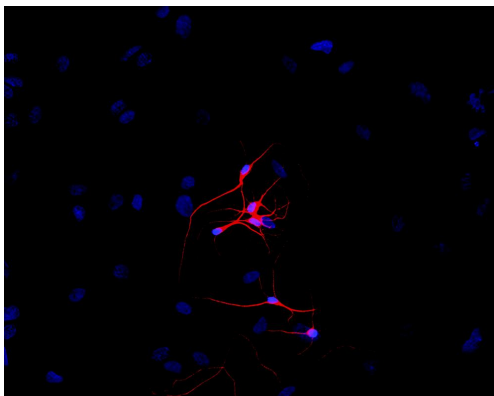
ARG62683 anti-beta III Tubulin antibody [TU-20] ICC/IF image

Immunofluorescence: Neuro2a mouse neuroblastoma cell stained with ARG62683 anti-beta III Tubulin antibody [TU-20] (green). Cell nuclei was stained with DAPI (blue).



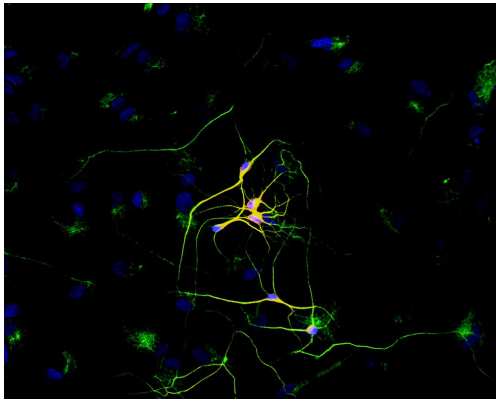
ARG62683 anti-beta III Tubulin antibody [TU-20] IHC-P image

Immunohistochemistry: Mouse brain stained with ARG62683 anti-beta III Tubulin antibody [TU-20].



ARG62683 anti-beta III Tubulin antibody [TU-20] ICC/IF image

Immunofluorescence: P-19 mouse embryonal carcinoma cells stimulated to neuronal differentiation by retinoic acid stained with ARG62683 anti-beta III Tubulin antibody [TU-20] (red). Cell nuclei was stained with DAPI (blue).



ARG62683 anti-beta III Tubulin antibody [TU-20] ICC/IF image

Immunofluorescence: P-19 mouse embryonal carcinoma cell line stimulated to neuronal differentiation by retinoic acid co-stained with stained with ARG62683 anti-beta III Tubulin antibody [TU-20] (red) and anti-beta-tubulin (green)
Superposition of red and green colours provided yellow staining. Nuclei were stained with DNA-binding dye (blue).