

ARG30306 Pro-B Cell Marker Antibody panel (CD19, CD34, CD38, CD40, CD45) (FACS)

Package: 1 kit
Store at: -20°C, 4°C

Component

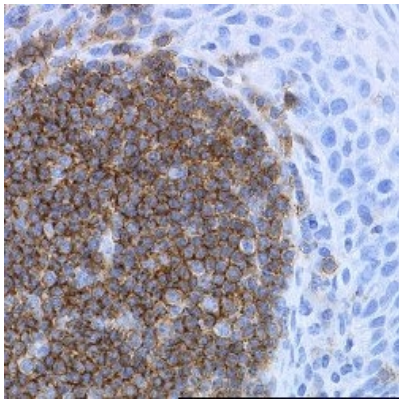
| Cat. No. | Component Name | Host clonality | Reactivity | Application | Package |
|----------|-------------------------------------|----------------|------------|-----------------------------|----------|
| ARG23128 | anti-CD19 antibody [LE-CD19] | Mouse mAb | Hu | ELISA, FACS, IHC-P, IP, WB | 50 µg |
| ARG62856 | anti-CD45 antibody [MEM-28] | Mouse mAb | Hu | FACS, ICC/IF, IHC-P, IP, WB | 50 µg |
| ARG62839 | anti-CD40 antibody [HI40a] (FITC) | Mouse mAb | Hu | FACS | 50 tests |
| ARG62820 | anti-CD34 antibody [4H11(APG)] | Mouse mAb | Hu | FACS, ICC/IF, IHC-P, WB | 50 µg |
| ARG65350 | Goat anti-Mouse IgG antibody (HRP) | Goat pAb | Ms | ELISA, IHC-P, WB | 50 µl |
| ARG65351 | Goat anti-Rabbit IgG antibody (HRP) | Goat pAb | Rb | ELISA, IHC-P, WB | 50 µl |

Summary

| | |
|---------------------|--|
| Product Description | <p>B cell development occurs in the bone marrow and peripheral lymphoid tissues such as spleen. In the bone marrow, pro B Cell, pre B Cell and Immature B Cell develop. During this differentiation, several stages of rearrangement occur at immunoglobulin locus, resulting in the generation and surface expression of different types of receptors, such as pre-B-cell receptor. Different markers are also expressed at the surface of these cells throughout the development of B cell.</p> <p>Pro B Cells express CD19, CD34, CD38, CD40 and B220 on the surface of the cells.</p> <p>Arigo has these marker antibodies in the application of Flow Cytometry for the convenience of identifying Pro-B Cells in B cell populations.</p> <p>Cambier et al. Nature Rev Immunology 7: 633-643 (2007) Alberts et al. Molecular Biology of the Cell: 1367 Parham. The Immune System</p> |
| Target Name | Pro-B Cell Marker |
| Alternate Names | Pro-B Cell Marker antibody; CD19 antibody; CD38 antibody; CD34 antibody; FITC-conjugated CD40 antibody; CD45 antibody |

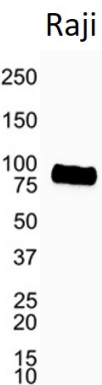
Properties

| | |
|---------------------|---|
| Storage instruction | Store antibodies at 4°C or -20°C. Please refer to the each product datasheet for detail temperatures of the antibodies. |
| Note | For laboratory research only, not for drug, diagnostic or other use. |



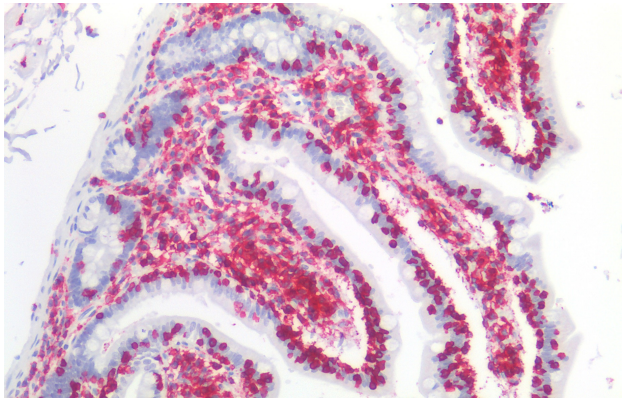
ARG23128 anti-CD19 antibody [LE-CD19] IHC-P image

Immunohistochemistry: Formalin-fixed and paraffin-embedded Human tonsil stained with ARG23128 anti-CD19 antibody [LE-CD19].



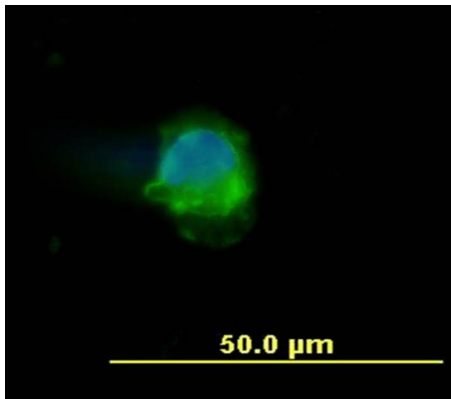
ARG23128 anti-CD19 antibody [LE-CD19] WB image

Western blot: Raji Human Lymphoblastic Burkitt's lymphoma whole cell lysate stained with ARG23128 anti-CD19 antibody [LE-CD19].



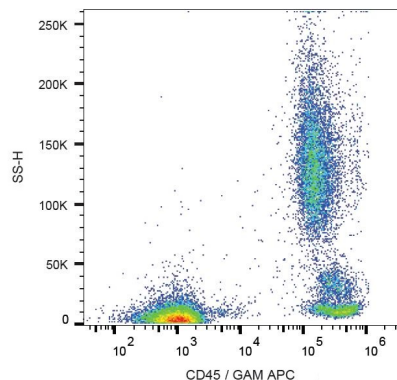
ARG62856 anti-CD45 antibody [MEM-28] IHC-P image

Immunohistochemistry: Paraffin-embedded Human small intestine tissue stained with ARG62856 anti-CD45 antibody [MEM-28] at 10 µg/ml dilution.



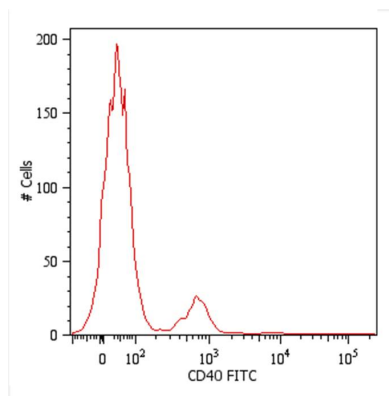
ARG62856 anti-CD45 antibody [MEM-28] ICC/IF image

Immunofluorescence: Human peripheral blood mononuclear cell stained with ARG62856 anti-CD45 antibody [MEM-28] (green). Cell nuclei was stained with DAPI (blue).



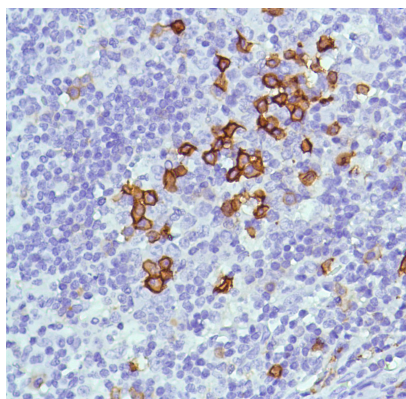
ARG62856 anti-CD45 antibody [MEM-28] FACS image

Flow Cytometry: Human peripheral blood cells stained with ARG62856 anti-CD45 antibody [MEM-28], followed by incubation with APC labelled Goat anti-Mouse secondary antibody.



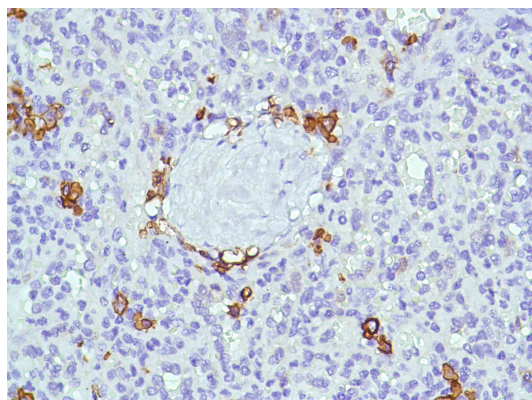
ARG62839 anti-CD40 antibody [HI40a] (FITC) FACS image

Flow Cytometry: Human peripheral blood cells stained with ARG62839 anti-CD40 antibody [HI40a] (FITC). Cells in the lymphocyte gate were used for analysis.



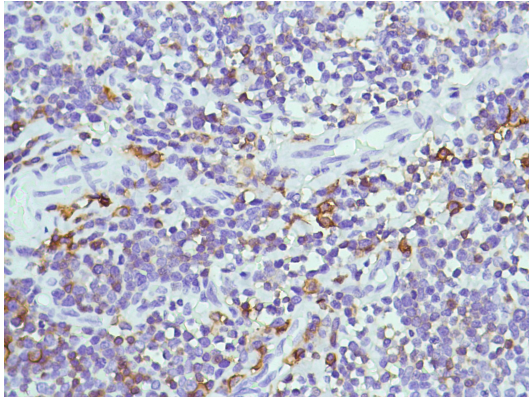
ARG52764 anti-CD38 antibody [SP149] IHC-P image

Immunohistochemistry: Human Tonsil stained with CD38 antibody [SP149] (ARG52764)



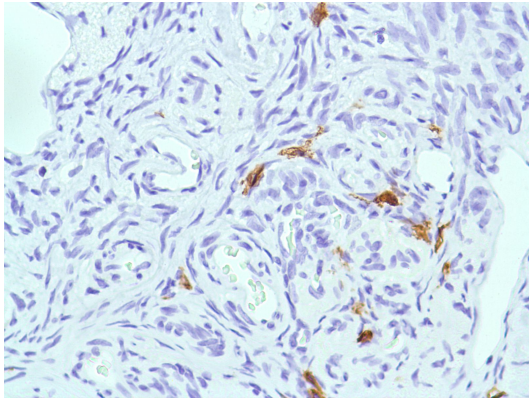
ARG52764 anti-CD38 antibody [SP149] IHC-P image

Immunohistochemistry: Human Spleen stained with CD38 antibody [SP149] (ARG52764)



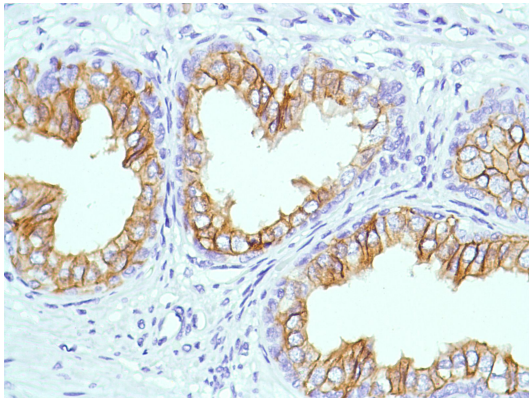
ARG52764 anti-CD38 antibody [SP149] IHC-P image

Immunohistochemistry: Human Thymus stained with CD38 antibody [SP149] (ARG52764)



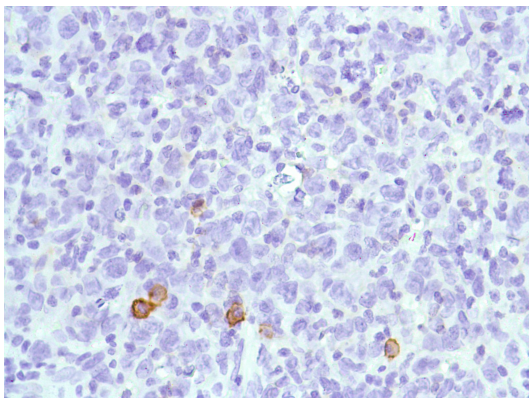
ARG52764 anti-CD38 antibody [SP149] IHC-P image

Immunohistochemistry: Human Ovary stained with CD38 antibody [SP149] (ARG52764)



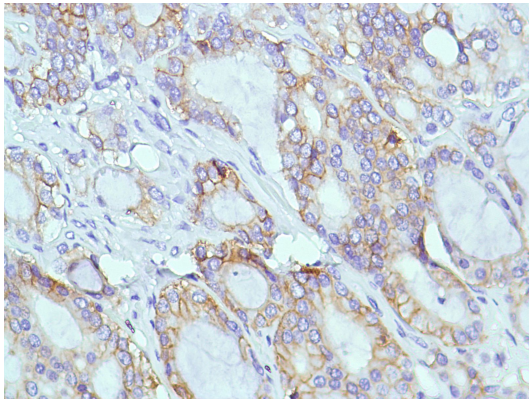
ARG52764 anti-CD38 antibody [SP149] IHC-P image

Immunohistochemistry: Human Prostate stained with CD38 antibody [SP149] (ARG52764)



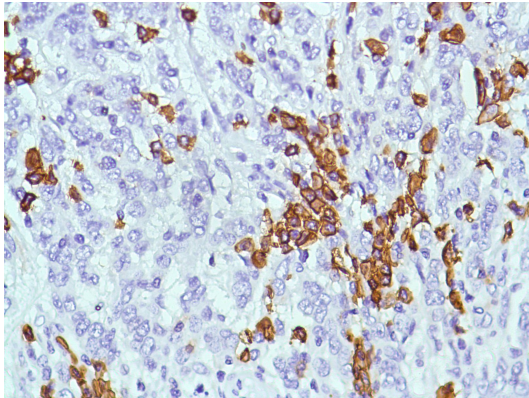
ARG52764 anti-CD38 antibody [SP149] IHC-P image

Immunohistochemistry: Human B Cell Lymphoma stained with CD38 antibody [SP149] (ARG52764)



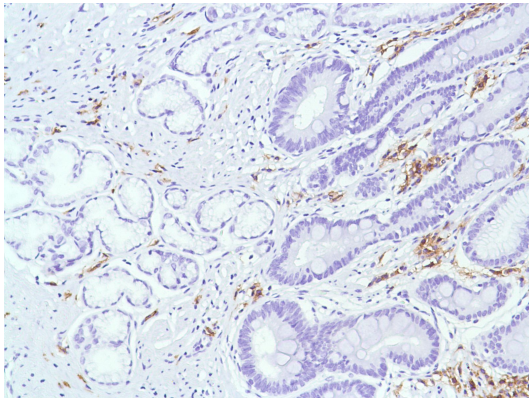
ARG52764 anti-CD38 antibody [SP149] IHC-P image

Immunohistochemistry: Human Prostate Adenocarcinoma stained with CD38 antibody [SP149] (ARG52764)



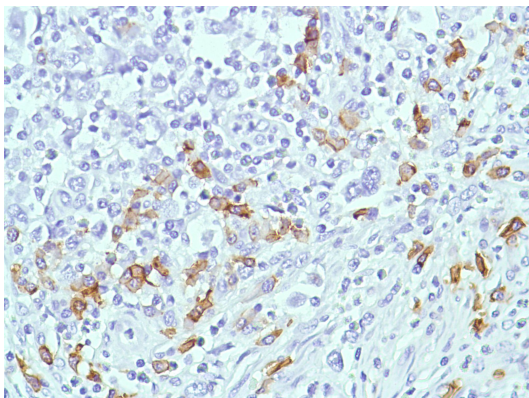
ARG52764 anti-CD38 antibody [SP149] IHC-P image

Immunohistochemistry: Human Stomach Adenocarcinoma stained with CD38 antibody [SP149] (ARG52764)



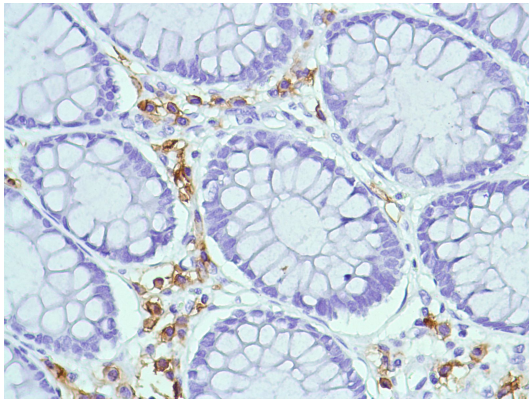
ARG52764 anti-CD38 antibody [SP149] IHC-P image

Immunohistochemistry: Human Stomach stained with CD38 antibody [SP149] (ARG52764)



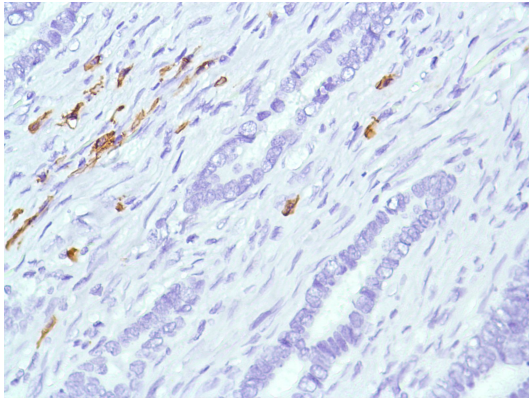
ARG52764 anti-CD38 antibody [SP149] IHC-P image

Immunohistochemistry: Human HK Lymphoma stained with CD38 antibody [SP149] (ARG52764)



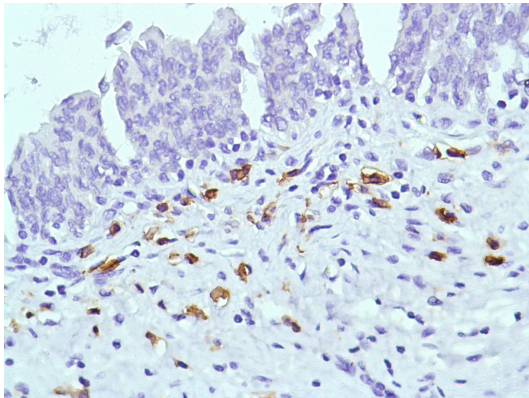
ARG52764 anti-CD38 antibody [SP149] IHC-P image

Immunohistochemistry: Human Colon stained with CD38 antibody [SP149] (ARG52764)



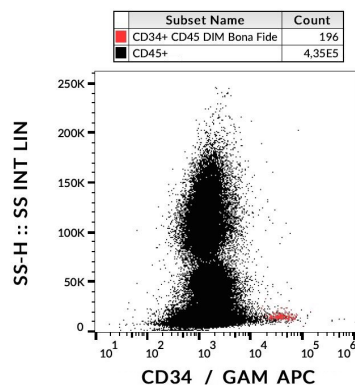
ARG52764 anti-CD38 antibody [SP149] IHC-P image

Immunohistochemistry: Human Colon Adenocarcinoma stained with CD38 antibody [SP149] (ARG52764)



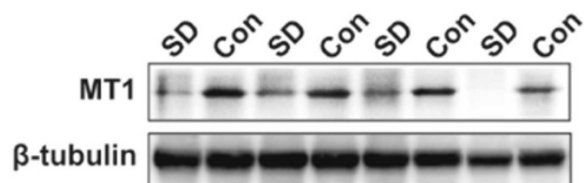
ARG52764 anti-CD38 antibody [SP149] IHC-P image

Immunohistochemistry: Human Bladder stained with CD38 antibody [SP149] (ARG52764)



ARG62820 anti-CD34 antibody [4H11(APG)] FACS image

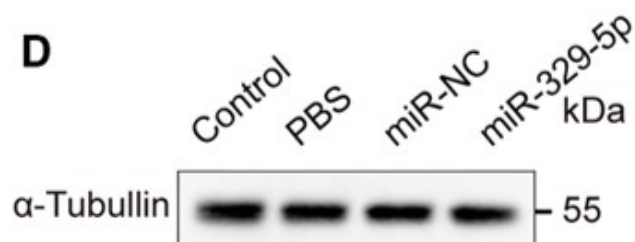
Flow Cytometry: Human peripheral blood stained with ARG62820 anti-CD34 antibody [4H11(APG)], followed by incubation with APC labelled Goat anti-Mouse secondary antibody. CD34+ cells (red); CD45+ cells (black).



ARG65351 Goat anti-Rabbit IgG antibody (HRP) WB image

Western blot: Rat placental stained with [ARG57589 anti-MTNR1A antibody](#) at 1:1000 dilution, ARG65351 Goat anti-Rabbit IgG antibody (HRP) at 1:5000 dilution.

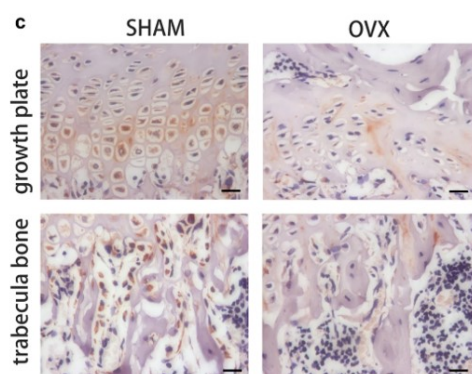
From Jinzhi Li et al. J Reprod Immunol. (2023), [doi: 10.1016/j.jri.2023.104166](#), Fig. 2.B.



ARG65351 Goat anti-Rabbit IgG antibody (HRP) WB image

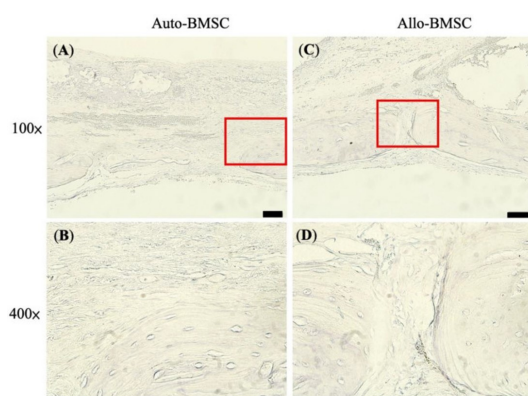
Western blot: Mouse retina stained with [ARG65693 anti-alpha Tubulin antibody](#) and ARG65351 Goat anti-Rabbit IgG antibody (HRP)

From Xiaoyuan Ye et al. Mol Ther Nucleic Acids. (2024), [doi: 10.1016/j.omtn.2024.102209](#), Fig. 5.D.



ARG65351 Goat anti-Rabbit IgG antibody (HRP) IHC-P image

From Yu-Qian Song et al. J Mol Med (Berl) (2022), [doi: 10.1007/s00109-021-02165-0](#), Fig. 5.c.



ARG65350 Goat anti-Mouse IgG antibody (HRP) IHC-P image

From Cheng-Feng Chu et al. J Pers Med. (2021), [doi: 10.3390/jpm11121326](#), Fig. 6.