

ARG30316 ER Marker Antibody Duo

Package: 1 pair
Store at: -20°C

Component

Cat. No.	Component Name	Host clonality	Reactivity	Application	Package
ARG55123	anti-Calreticulin antibody	Rabbit pAb	Hu, Ms, Rat	ICC/IF, IHC-P, WB	50 µl
ARG20531	anti-BiP / GRP78 antibody	Rabbit pAb	Hu, Ms, Rat, Bov, Dog, Fungi, Hm, Mk, Rb, Xenopus laevis	ICC/IF, IHC-FoFr, IHC-P, IP, WB	50 µl

Summary

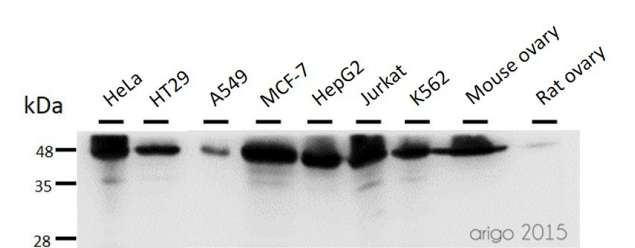
Product Description	<p>Endoplasmic reticulum (ER) is a network of membrane-enclosed tubules and sacs (cisternae) that extends from the nuclear membrane throughout the cytoplasm. The ER lumen is the area enclosed by the ER membrane. ER is responsible for protein synthesis and folding, protein transport into the Golgi apparatus, and lipid metabolism.</p> <p>arigo's ER Marker Antibody Duo comprises an ER membrane marker Calreticulin antibody and an ER lumen marker BiP antibody. It is an excellent solution for labeling ER structures.</p>
Target Name	ER Marker
Alternate Names	ER Marker antibody; BiP / GRP78 antibody; Calreticulin antibody

Properties

Storage instruction	For continuous use, store undiluted antibody at 2-8°C for up to a week. For long-term storage, aliquot and store at -20°C or below. Storage in frost free freezers is not recommended. Avoid repeated freeze/thaw cycles. Suggest spin the vial prior to opening. The antibody solution should be gently mixed before use.
Note	For laboratory research only, not for drug, diagnostic or other use.

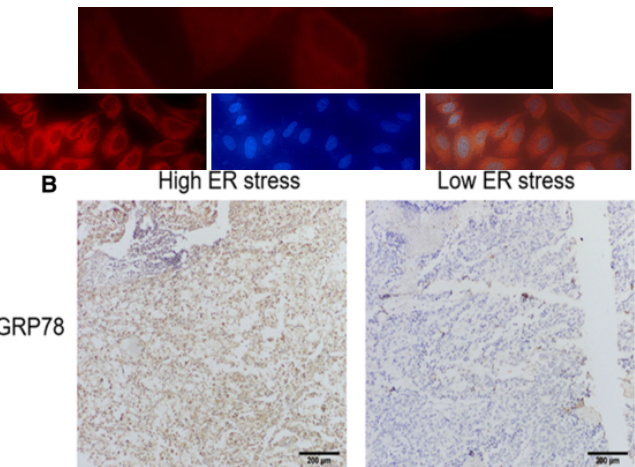
Bioinformation

Gene Full Name	Antibody Duo for ER Marker
Highlight	<p>Related Product:</p> <p>anti-Calreticulin antibody;</p> <p>anti-BiP / GRP78 antibody;</p>



ARG55123 anti-Calreticulin antibody WB image

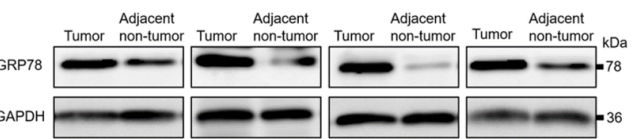
Western blot: 30 µg of HeLa, HT29, A549, MCF-7, HepG2, Jurkat, K562, Mouse ovary and Rat ovary lysates stained with ARG55123 anti-Calreticulin antibody at 1:500 dilution.



ARG20531 anti-BiP / GRP78 antibody IHC-P image

Immunohistochemistry: Human hepatocellular carcinoma stained with ARG20531 anti-BiP / GRP78 antibody at 1:500 dilution.

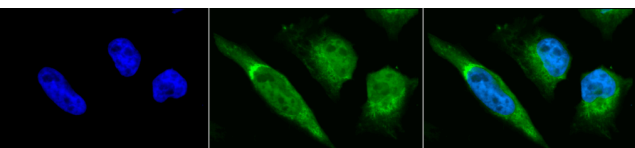
From Yue Zhu et al. Cancer Med. (2020), [doi: 10.1002/cam4.2977](https://doi.org/10.1002/cam4.2977), Fig. 5B.



ARG20531 anti-BiP / GRP78 antibody WB image

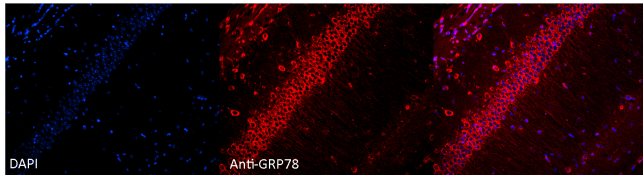
Western blot: Human hepatocellular carcinoma stained with ARG20531 anti-BiP / GRP78 antibody at 1:500 dilution.

From Yue Zhu et al. Cancer Med. (2020), [doi: 10.1002/cam4.2977](https://doi.org/10.1002/cam4.2977), Fig. 5D.



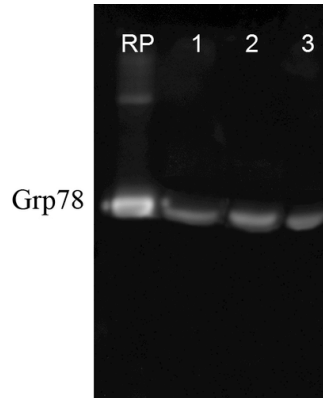
ARG20531 anti-BiP / GRP78 antibody ICC/IF image

Immunofluorescence: Heat Shocked (42°C for 30 min) HeLa cells. Fixation: 2% Formaldehyde for 20 min at RT. Primary Antibody: ARG20531 anti-BiP / GRP78 antibody at 1:100 for 12 hours at 4°C. Secondary Antibody: FITC Goat anti-Rabbit (green) at 1:200 for 2 hours at RT. Counterstain: DAPI (blue) nuclear stain at 1:40000 for 2 hours at RT. Magnification: 100x. Left: DAPI (blue) nuclear stain. Middle: ARG20531 anti-BiP / GRP78 antibody. Right: Composite.



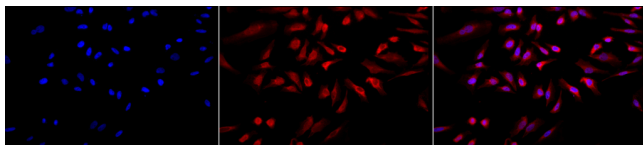
ARG20531 anti-BiP / GRP78 antibody IHC image

Immunohistochemistry: Formaldehyde-fixed and paraffin embedded sections of Mouse hippocampal tissue stained with ARG20531 anti-BiP / GRP78 antibody at 1:100 dilution. Tissue was counterstained using DAPI at a 1:1000 dilution in order to visualize the nuclei in the pyramidal cell layer. Images courtesy of Rachel Reith, NIH/NIMH.



ARG20531 anti-BiP / GRP78 antibody WB image

Western blot: Human, Dog, Mouse cell line lysates stained with ARG20531 anti-BiP / GRP78 antibody at 1:1000 dilution.



ARG20531 anti-BiP / GRP78 antibody ICC/IF image

Immunofluorescence: Heat Shocked (42°C for 30 min) HeLa cells. Fixation: 2% Formaldehyde for 20 min at RT. Primary Antibody: ARG20531 anti-BiP / GRP78 antibody at 1:100 for 12 hours at 4°C. Secondary Antibody: APC Goat anti-Rabbit (red) at 1:200 for 2 hours at RT. Counterstain: DAPI (blue) nuclear stain at 1:40000 for 2 hours at RT. Magnification: 20x. Left: DAPI (blue) nuclear stain. Middle: ARG20531 anti-BiP / GRP78 antibody. Right: Composite.



ARG20531 anti-BiP / GRP78 antibody WB image

Western blot: Rat brain, heart, kidney, liver, lung, pancreas, skeletal muscle, spleen, testes, thymus, H9C2 cell, Mouse NIH 3T3 and Pam212 cell lysates stained with ARG20531 anti-BiP / GRP78 antibody.