

ARG30326 Inflammatory Cell Antibody Panel (for mouse)

Package: 1 kit
Store at: -20°C

Component

Cat. No.	Component Name	Host clonality	Reactivity	Application	Package
ARG22104	anti-Ly6G + Ly6C antibody [RB6-8C5]	Rat mAb	Ms	Depletion, FACS, IHC-Fr, IHC-P, IP	20 µg
ARG22476	anti-EMR1 F4 / 80 antibody [Cl:A3-1]	Rat mAb	Ms, Rat	EM, FACS, ICC/IF, IHC-Fr, IHC-P, IHC-R, IP, RIA, WB	20 µg
ARG22819	anti-CD3 epsilon antibody [CD3-12]	Rat mAb	Hu, Ms, Bov, Cat, Chk, Dog, Duck, Hrs, Pig, R. Mk, Rb, Xenopus	FACS, ICC/IF, IHC-Fr, IHC-P, WB	20 µg
ARG65535	anti-CD45R / B220 antibody [RA3-6B2]	Rat mAb	Hu, Ms, Cat	CytoF®-candidate, FACS, FuncSt, ICC/IF, IHC-Fr, IHC-P, IP	20 µg

Summary

Product Description Mouse Inflammatory Cell Antibody Panel is an all-in-one solution to make detecting inflammatory cells easy and economic. It is ideal for labeling inflammatory cells in mouse tumor or damaged tissues. This antibody panel comprises early and late inflammatory cell markers: Ly6G/Ly6C, F4/80, CD3 and B220 antibodies are markers for neutrophil, macrophage, T cell and B cell, respectively. All the antibodies in this panel have excellent performance for IHC-P and more applications. Moreover, the rat primary antibodies make the panel as the best choice for pathological staining on mouse tissues.

Related news:
[Inflammation antibody panels are released](#)
[Exploring Antiviral Immune Response](#)

Target Name Inflammatory Cell

Alternate Names Inflammatory Cell antibody; Ly6G + Ly6C antibody; EMR1 F4/80 antibody; CD3 antibody; CD45R / B220 antibody

Properties

Storage instruction For continuous use, store undiluted antibody at 2-8°C for up to a week. For long-term storage, aliquot and store at -20°C or below. Storage in frost free freezers is not recommended. Avoid repeated freeze/thaw cycles. Suggest spin the vial prior to opening. The antibody solution should be gently mixed before use.

Note For laboratory research only, not for drug, diagnostic or other use.

Bioinformation

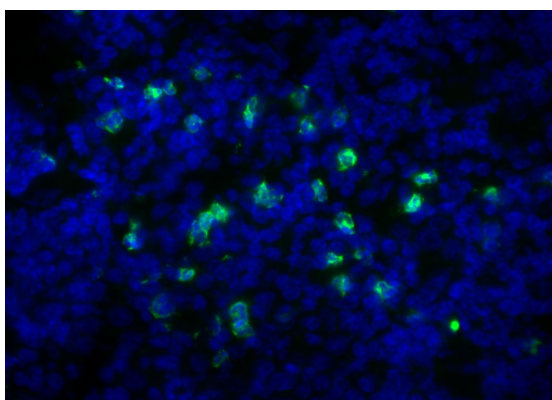
Gene Full Name Antibody Panel for Inflammatory Cell (for mouse)

Highlight

Related products:

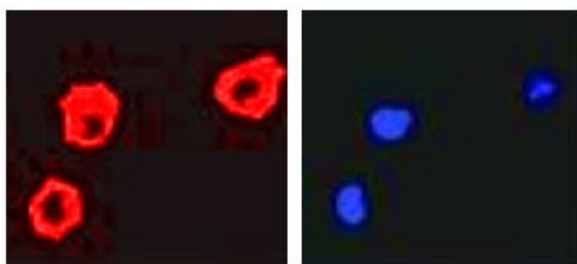
[anti-Ly6G + Ly6C antibody:](#)
[anti-EMR1 F4 / 80 antibody:](#)
[anti-CD3 epsilon antibody:](#)
[anti-CD45R / B220 antibody:](#)
[Inflammation antibodies:](#)
[Inflammation Duos / Panels:](#)

Images



ARG22104 anti-Ly6G + Ly6C antibody [RB6-8C5] IHC-Fr image

Immunohistochemistry: Mouse spleen section stained with [ARG22104](#) anti-Ly6G + Ly6C antibody [RB6-8C5] followed by [ARG21706](#) Mouse anti-Rat IgG2b antibody [2B10A8] (FITC).

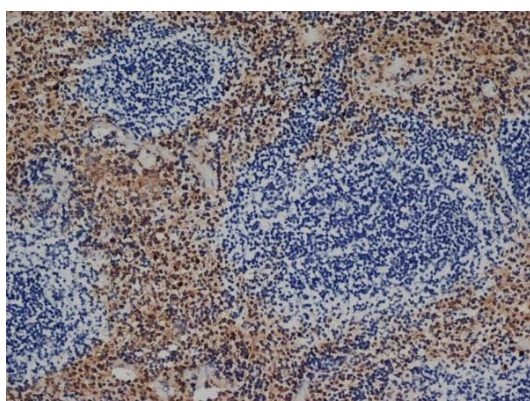


EMR1 F4/80

DAPI

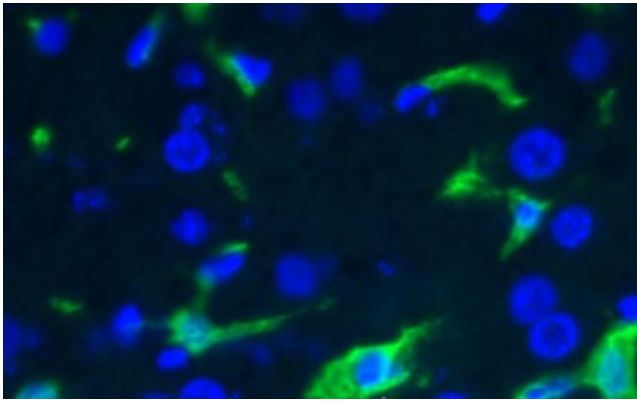
ARG22476 anti-EMR1 F4/80 antibody [Cl:A3-1] ICC/IF image

Immunofluorescence: Rat tumor macrophages stained with ARG22476 anti-EMR1 F4/80 antibody [Cl:A3-1].



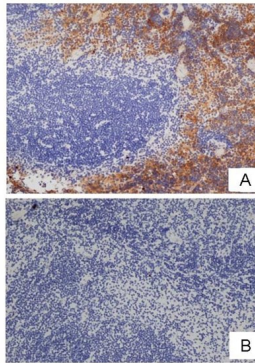
ARG22476 anti-EMR1 F4/80 antibody [Cl:A3-1] IHC-P image

Immunohistochemistry: Mouse spleen cryosection stained with ARG22476 anti-EMR1 F4/80 antibody [Cl:A3-1] at 1:100 dilution.



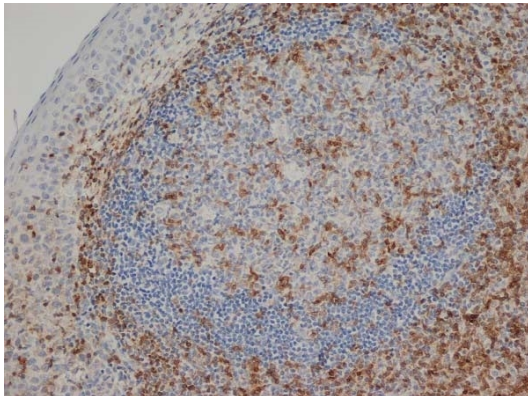
ARG22476 anti-EMR1 F4/80 antibody [Cl:A3-1] IHC-Fr image

Immunohistochemistry: Frozen section of Mouse liver tissue stained with ARG22476 anti-EMR1 F4/80 antibody [Cl:A3-1] at 1:100 dilution.



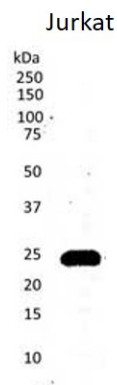
ARG22476 anti-EMR1 F4/80 antibody [Cl:A3-1] IHC-P image

Immunohistochemistry: A. Mouse spleen stained with ARG22476 anti-EMR1 F4/80 antibody [Cl:A3-1] at 1:100 dilution. B. Primary antibodies preincubated with 2 molar excess of Human anti Idiotypic.



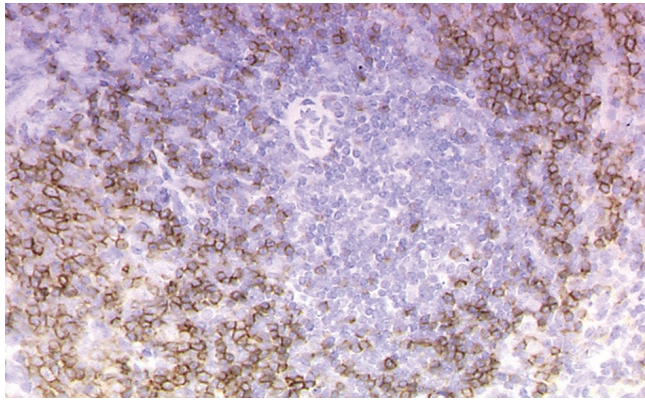
ARG22819 anti-CD3 epsilon antibody [CD3-12] IHC-P image

Immunohistochemistry: Formalin-fixed and paraffin-embedded Human tonsil stained with ARG22819 anti-CD3 epsilon antibody [CD3-12]. Antigen Retrieval: Boil tissue section in EDTA buffer (pH 9.0).



ARG22819 anti-CD3 epsilon antibody [CD3-12] WB image

Western blot: Jurkat human acute T-cell leukemia whole cell lysate stained with ARG22819 anti-CD3 epsilon antibody [CD3-12].



ARG65535 anti-CD45R / B220 antibody [RA3-6B2] IHC-P image

Immunohistochemistry: Paraffin-embedded Mouse lymph node tissue stained with ARG65535 anti-CD45R / B220 antibody [RA3-6B2] at 1:50 dilution. Antigen Retrieval: Microwaved tissue section for 30 min in 10 mM Sodium citrate buffer, 0.05% Tween 20 (pH 6.0).