

ARG30330 Pyroptosis Antibody Panel

Package: 1 kit
Store at: -20°C

Component

Cat. No.	Component Name	Host clonality	Reactivity	Application	Package
ARG57293	anti-Caspase 1 antibody	Rabbit pAb	Hu, Ms	ICC/IF, IHC-P, IP, WB	20 µl
ARG41404	anti-GSDMD antibody	Rabbit pAb	Hu, Ms, Rat	ICC/IF, WB	20 µl
ARG66285	anti-IL1 beta antibody [SQab1748]	Mouse mAb	Hu, Ms	ELISA, FACS, ICC/IF, IHC-P, WB	20 µg
ARG62347	anti-beta Tubulin antibody [BT7R]	Mouse mAb	Hu, Ms, Rat, Chk, Mk, Rb	Dot, ELISA, ICC/IF, WB	20 µg

Summary

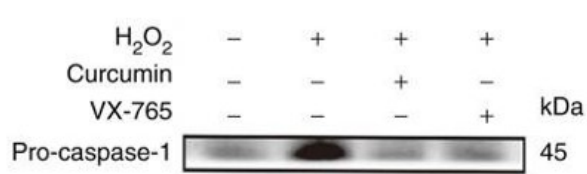
Product Description	<p>Pyroptosis Antibody Panel is an all-in-one solution to make pyroptosis research easy and economic. This antibody panel comprises antibodies against pyroptosis key players Caspase-1, GSDMD, and IL1 beta. All three antibodies are good for detecting both pro- and cleaved proteins. Moreover, a loading control antibody against Tubulin is also included. This panel is the best solution for studying pyroptosis.</p> <p>Related news: Exploring Antiviral Immune Response: AMPK signaling regulates NLRP3 inflammation and pyroptosis: m6A reader YTHDF2 in mRNA decay and aggresome formation:</p>
Target Name	Pyroptosis
Alternate Names	Pyroptosis antibody; GSDMD antibody; Caspase 1 antibody; beta Tubulin antibody; IL1 beta antibody

Properties

Storage instruction	For continuous use, store undiluted antibody at 2-8°C for up to a week. For long-term storage, aliquot and store at -20°C or below. Storage in frost free freezers is not recommended. Avoid repeated freeze/thaw cycles. Suggest spin the vial prior to opening. The antibody solution should be gently mixed before use.
Note	For laboratory research only, not for drug, diagnostic or other use.

Bioinformation

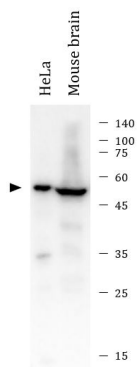
Gene Full Name	Antibody Panel for Pyroptosis
Highlight	<p>Related Product:</p> <p>anti-Caspase 1 antibody: anti-GSDMD antibodies: anti-IL1 beta antibody:</p>



ARG57293 anti-Caspase 1 antibody WB image

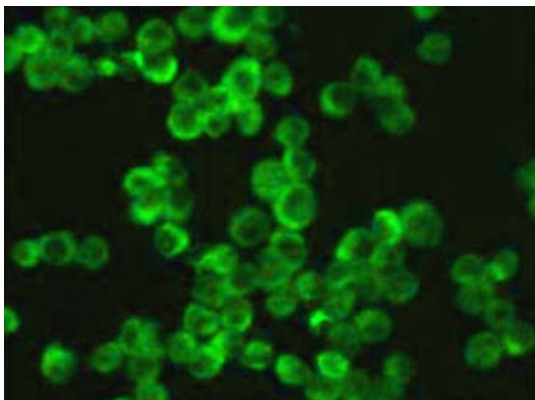
Western blot: HUVECs stained with ARG57293 anti-Caspase 1 antibody at 1:1000 dilution.

From Yulin Yuan et al. Mol Med Rep. (2022), [doi: 10.3892/mmr.2022.12730](https://doi.org/10.3892/mmr.2022.12730), Fig. 3.(A).



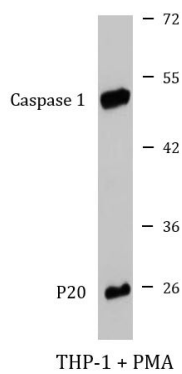
ARG57293 anti-Caspase 1 antibody WB image

Western blot: 10 µg of HeLa and 20 µg of Mouse brain lysates stained with ARG57293 anti-Caspase 1 antibody at 1:1000 dilution.



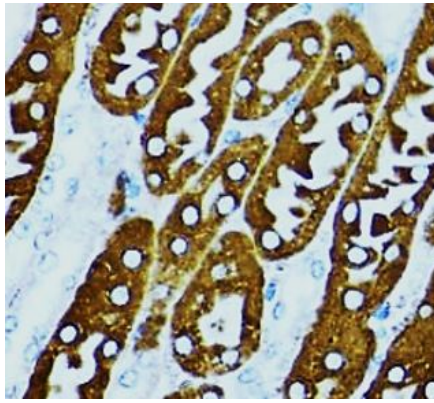
ARG57293 anti-Caspase 1 antibody ICC/IF image

Immunofluorescence: Raw264.7 cells stained with ARG57293 anti-Caspase 1 antibody at 1:100 dilution.



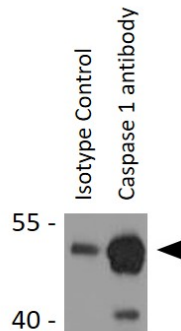
ARG57293 anti-Caspase 1 antibody WB image

Western blot: 25 µg of cell lysate from PMA treated THP-1 cells were stained with ARG57293 anti-Caspase 1 antibody at 1:1000 dilution.



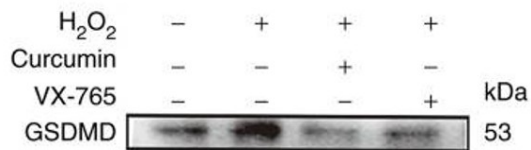
ARG57293 anti-Caspase 1 antibody IHC-P image

Immunohistochemistry: Paraffin-embedded Mouse kidney tissue stained with ARG57293 anti-Caspase 1 antibody at 1:100 dilution.



ARG57293 anti-Caspase 1 antibody IP image

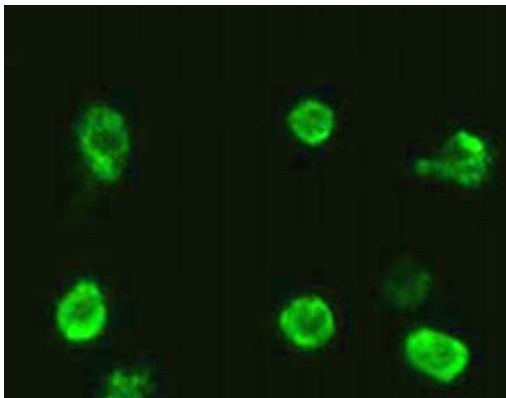
Immunoprecipitation: 200 µg extracts of THP-1 cells
Immunoprecipitated and stained with ARG57293 anti-Caspase 1 antibody at 1:1000 dilution.



ARG41404 anti-GSDMD antibody WB image

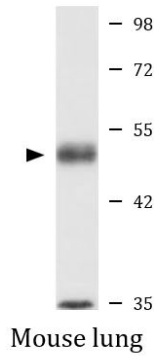
Western blot: HUVECs stained with ARG41404 anti-GSDMD antibody at 1:1000 dilution.

From Yulin Yuan et al. Mol Med Rep. (2022), [doi: 10.3892/mmr.2022.12730](https://doi.org/10.3892/mmr.2022.12730), Fig. 3.(A).



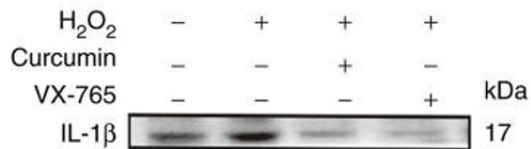
ARG41404 anti-GSDMD antibody ICC/IF image

Immunofluorescence: RAW264.7 cells stained with ARG41404 anti-GSDMD antibody at 1:100 dilution.



ARG41404 anti-GSDMD antibody WB image

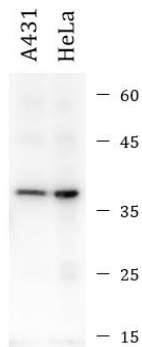
Western blot: 25 µg of Mouse lung lysate stained with ARG41404 anti-GSDMD antibody at 1:1000 dilution.



ARG66285 anti-IL1 beta antibody [SQab1748] WB image

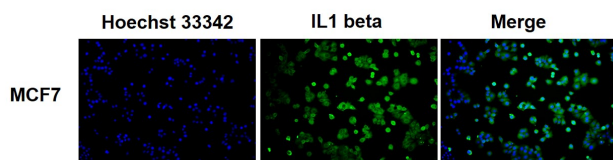
Western blot: HUVECs stained with ARG66285 anti-IL1 beta antibody [SQab1748] at 1:1000 dilution.

From Yulin Yuan et al. Mol Med Rep. (2022), [doi: 10.3892/mmr.2022.12730](https://doi.org/10.3892/mmr.2022.12730), Fig. 3.(A).



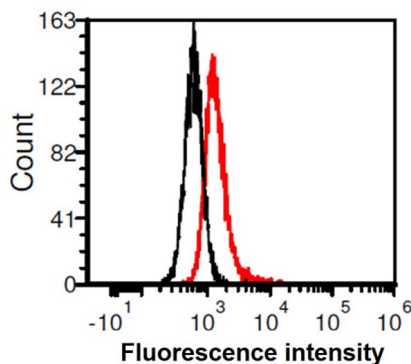
ARG66285 anti-IL1 beta antibody [SQab1748] WB image

Western blot: 20 µg of A431 and HeLa cell lysates stained with ARG66285 anti-IL1 beta antibody [SQab1748] at 1:4000 dilution.



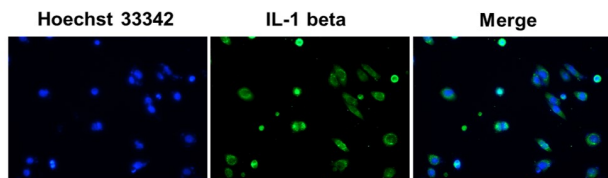
ARG66285 anti-IL1 beta antibody [SQab1748] ICC/IF image

Immunofluorescence: MCF7 cells stained with ARG66285 anti-IL1 beta antibody [SQab1748] at 1:200 dilution.



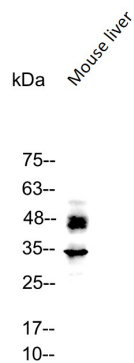
ARG66285 anti-IL1 beta antibody [SQab1748] FACS image

Flow Cytometry: HeLa cells stained with ARG66285 anti-IL1 beta antibody [SQab1748] at 1 µg/ml (red) and without antibody control (black).



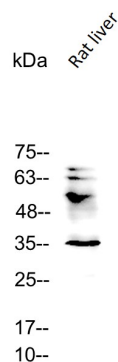
ARG66285 anti-IL1 beta antibody [SQab1748] ICC/IF image

Immunofluorescence: HeLa cells were fixed in 4% PFA, permeabilized with PBS containing 0.1% Triton X-100. Cells were stained with ARG66285 anti-IL1 beta antibody [SQab1748] (green) at 1:200 dilution, and cell nuclei were stained with Hoechst 33342 (blue).



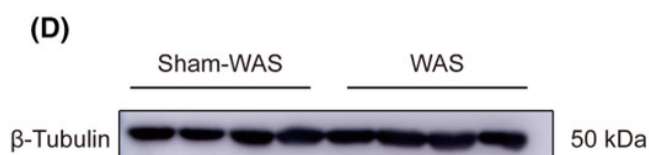
ARG66285 anti-IL1 beta antibody [SQab1748] WB image

Western blot: 50 µg of Mouse liver lysate stained with ARG66285 anti-IL1 beta antibody [SQab1748] at 1:5000 dilution.



ARG66285 anti-IL1 beta antibody [SQab1748] WB image

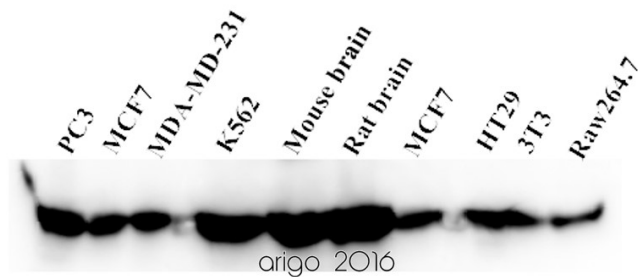
Western blot: 50 µg of Rat liver lysate stained with ARG66285 anti-IL1 beta antibody [SQab1748] at 1:5000 dilution.



ARG62347 anti-beta Tubulin antibody [BT7R] WB image

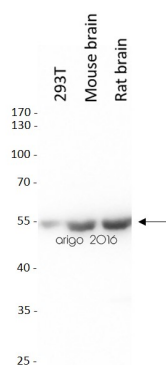
Western blot: Rat basolateral amygdala stained with ARG62347 anti-beta Tubulin antibody [BT7R] at 1:1000 dilution, [ARG65350 Goat anti-Mouse IgG antibody \(HRP\)](#) at 1:5000 dilution.

From Guang-Bing Duan et al. CNS Neurosci Ther. (2024), [doi: 10.1111/cns.14611](#), Fig. 4.D.



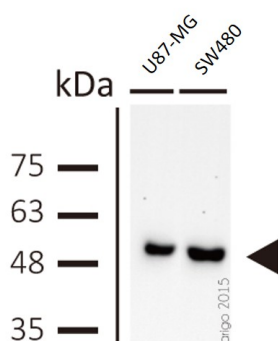
ARG62347 anti-beta Tubulin antibody [BT7R] WB image

Western blot: 20 µg of PC3, MCF7, MDA-MD-231, K562, M. brain, R. brain, MCF7, HT29, 3T3 and Raw264.7 cell lysates stained with ARG62347 anti-beta Tubulin antibody [BT7R] at 1:3000 dilution.



ARG62347 anti-beta Tubulin antibody [BT7R] WB image

Western blot: 20 µg of 293T, Mouse brain and Rat brain lysates stained with ARG62347 anti-beta Tubulin antibody [BT7R] at 1:10000 dilution.



ARG62347 anti-beta Tubulin antibody [BT7R] WB image

Western blot: U87-MG and SW480 cell lysates stained with ARG62347 anti-beta Tubulin antibody [BT7R] at 1:1000 dilution.