

ARG30344 Necrosome Antibody Panel

Package: 1 kit
Store at: -20°C

Component

Cat. No.	Component Name	Host clonality	Reactivity	Application	Package
ARG55746	anti-RIPK1 / RIP1 antibody	Rabbit pAb	Hu, Ms, Rat	ICC/IF, WB	20 µg
ARG54926	anti-RIPK3 / RIP3 antibody	Rabbit pAb	Hu, Ms, Rat	ELISA, ICC/IF, IHC-P, IHC-Fr, IP, WB	20 µg
ARG41397	anti-MLKL antibody	Rabbit pAb	Hu, Ms	IHC-P, WB	20 µl

Summary

Product Description Related news:
[RIP1 activation and pathogenesis of NASH](#)
[Solutions for studying PANoptosis & PANoptosome](#)

Target Name Necrosome

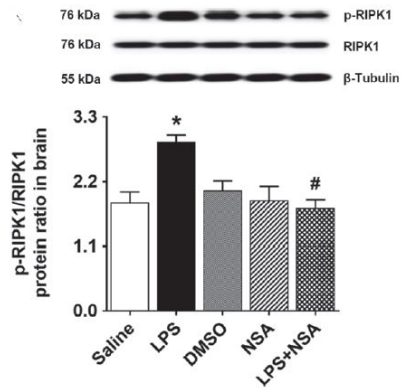
Properties

Storage instruction For continuous use, store undiluted antibody at 2-8°C for up to a week. For long-term storage, aliquot and store at -20°C or below. Storage in frost free freezers is not recommended. Avoid repeated freeze/thaw cycles. Suggest spin the vial prior to opening. The antibody solution should be gently mixed before use.

Note For laboratory research only, not for drug, diagnostic or other use.

Bioinformation

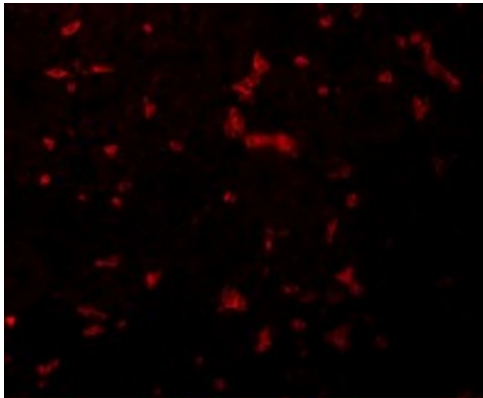
Highlight Related Product:
[anti-RIPK1 / RIP1 antibody;](#)
[anti-RIPK3 / RIP3 antibody;](#)
[anti-MLKL antibody;](#)



ARG55746 anti-RIPK1 / RIP1 antibody WB image

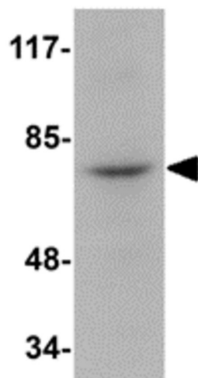
Western blot: Mouse brain stained with ARG55746 anti-RIPK1 / RIP1 antibody and [ARG66476 anti-RIPK1 / RIP1 phospho \(Ser166\) antibody \[YJY-1-5\]](#) .

From Beyza Ozgen et al. Research Article (2022), [doi:](#) , Fig. 3. A.



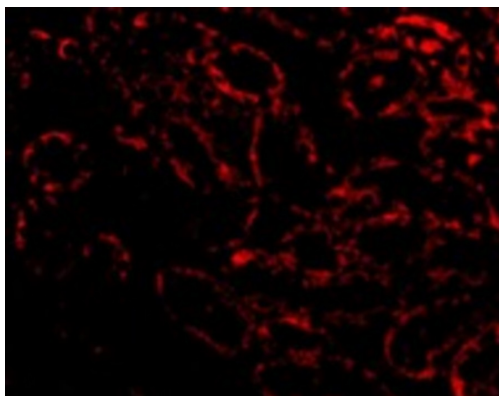
ARG55746 anti-RIPK1 / RIP1 antibody ICC/IF image

Immunofluorescence: Mouse Kidney cells stained with ARG55746 anti-RIPK1 / RIP1 antibody at 20 µg/ml dilution.



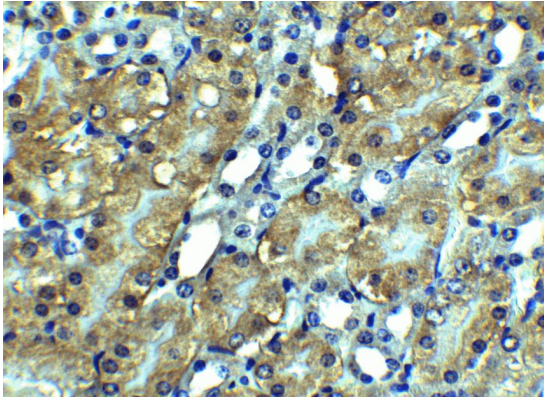
ARG55746 anti-RIPK1 / RIP1 antibody WB image

Western blot: Rat kidney tissue lysate stained with ARG55746 anti-RIPK1 / RIP1 antibody at 1 µg/ml dilution.



ARG54926 anti-RIPK3 / RIP3 antibody ICC/IF image

Immunofluorescence: Rat kidney cells stained with ARG54926 anti-RIPK3 / RIP3 antibody at 20 µg/ml dilution.



ARG54926 anti-RIPK3 / RIP3 antibody IHC-P image

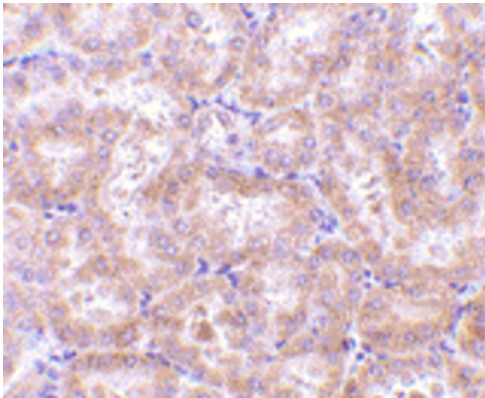
Immunohistochemistry: Paraffin-embedded Mouse kidney tissue. Tissue was fixed with formaldehyde and blocked with 10% serum for 1 hour at RT. Antigen Retrieval: Heat mediation was performed in Citrate buffer (pH 6.0). The tissue section was stained with ARG54926 anti-RIPK3 / RIP3 antibody at 2.5 $\mu\text{g}/\text{ml}$ dilution, overnight at 4°C. Counter stained with Hematoxylin.



A431

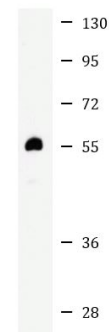
ARG54926 anti-RIPK3 / RIP3 antibody WB image

Western blot: 15 μg of A431 cell lysate stained with ARG54926 anti-RIPK3 / RIP3 antibody at 0.5 $\mu\text{g}/\text{ml}$ dilution and incubated at RT for 1 hour.



ARG54926 anti-RIPK3 / RIP3 antibody IHC-P image

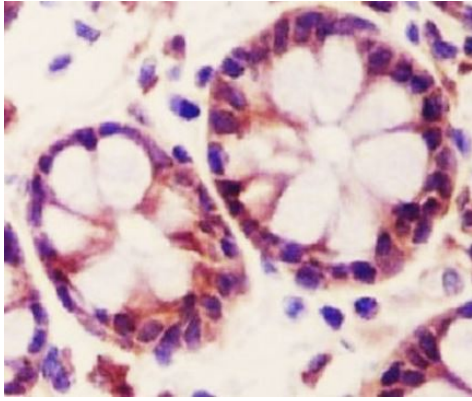
Immunohistochemistry: Paraffin-embedded Rat kidney tissue. Tissue was fixed with formaldehyde and blocked with 10% serum for 1 hour at RT. Antigen Retrieval: Heat mediation was performed in Citrate buffer (pH 6.0). The tissue section was stained with ARG54926 anti-RIPK3 / RIP3 antibody at 5 $\mu\text{g}/\text{ml}$ dilution, overnight at 4°C. Counter stained with Hematoxylin.



C2C12

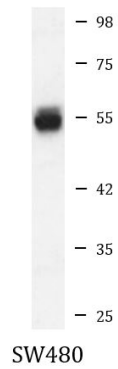
ARG54926 anti-RIPK3 / RIP3 antibody WB image

Western blot: 15 μg of C2C12 cell lysate stained with ARG54926 anti-RIPK3 / RIP3 antibody at 0.5 $\mu\text{g}/\text{ml}$ dilution and incubated at RT for 1 hour.



ARG41397 anti-MLKL antibody IHC-P image

Immunohistochemistry: Paraffin-embedded Human colon tissue stained with ARG41397 anti-MLKL antibody.



ARG41397 anti-MLKL antibody WB image

Western blot: SW480 cell lysate stained with ARG41397 anti-MLKL antibody at 1:1000 dilution.