

## ARG30345 Keap1-Nrf2-ARE Antibody Panel

Package: 1 kit  
Store at: -20°C

### Component

Cat. No.	Component Name	Host clonality	Reactivity	Application	Package
ARG40635	anti-Nrf 2 antibody	Rabbit pAb	Hu, Ms	ICC/IF, IHC-P, IP, WB	20 µl
ARG43340	anti-NQO1 antibody	Rabbit pAb	Hu, Ms, Rat	FACS, ICC/IF, IP, WB	20 µl
ARG43341	anti-Heme Oxygenase 1 antibody	Rabbit pAb	Hu, Ms, Rat	ICC/IF, IHC-P, IP, WB	20 µl
ARG66711	anti-KEAP1 antibody	Rabbit pAb	Hu, Ms, Rat	IHC-P, WB	20 µg

### Summary

**Product Description** This antibody panel comprises Nrf2 antibody as well as Nrf2 regulator Keap1 and antioxidant enzymes NQO1 and HO-1 antibodies. It is the best solution to facilitate the research of Keap1-Nrf2-ARE pathway.

Related News:

[Examining RSL3-induced activation of Keap1-Nrf2-ARE pathway:](#)

[Keap1-Nrf2-ARE antibody panel is launched:](#)

**Target Name** Keap1-Nrf2-ARE

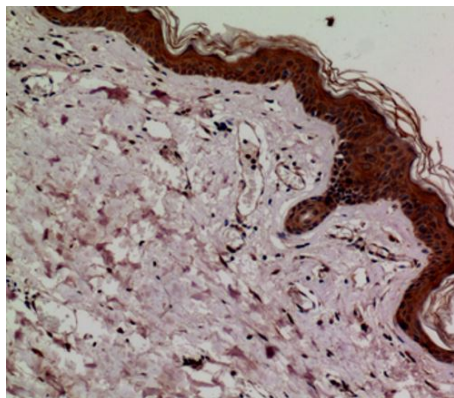
### Properties

**Storage instruction** For continuous use, store undiluted antibody at 2-8°C for up to a week. For long-term storage, aliquot and store at -20°C or below. Storage in frost free freezers is not recommended. Avoid repeated freeze/thaw cycles. Suggest spin the vial prior to opening. The antibody solution should be gently mixed before use.

**Note** For laboratory research only, not for drug, diagnostic or other use.

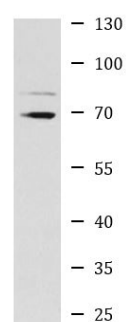
### Bioinformation

**Highlight** Related Product:  
[anti-Nrf 2 antibody;](#)  
[anti-NQO1 antibody;](#)  
[anti-Heme Oxygenase 1 antibody;](#)  
[anti-KEAP1 antibody;](#)  
[KEAP1 Duos / Panels;](#)  
[Nrf 2 Duos / Panels;](#)



ARG66711 anti-KEAP1 antibody IHC-P image

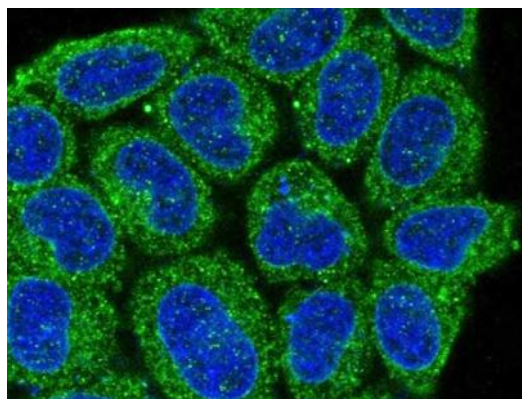
Immunohistochemistry: Paraffin-embedded Human skin tissue stained with ARG66711 anti-KEAP1 antibody at 1:100 dilution.



K562

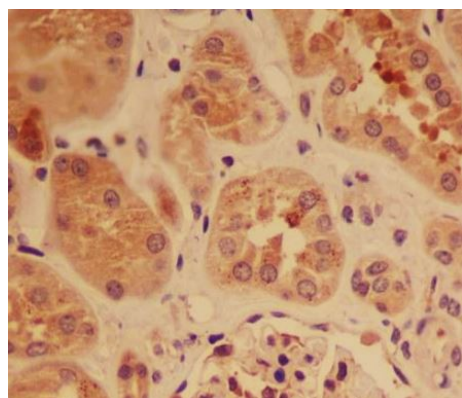
ARG66711 anti-KEAP1 antibody WB image

Western blot: K562 cell lysate stained with ARG66711 anti-KEAP1 antibody at 1:1000 dilution.



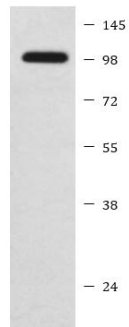
ARG40635 anti-Nrf 2 antibody ICC/IF image

Immunofluorescence: HeLa cells stained with ARG40635 anti-Nrf 2 antibody.



ARG40635 anti-Nrf 2 antibody IHC-P image

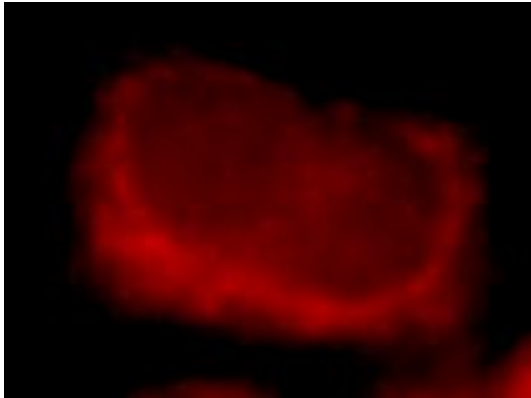
Immunohistochemistry: Paraffin-embedded Human kidney tissue stained with ARG40635 anti-Nrf 2 antibody.



HepG2

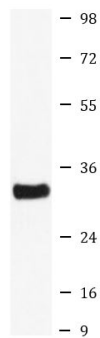
#### ARG40635 anti-Nrf 2 antibody WB image

Western blot: HepG2 cell lysate stained with ARG40635 anti-Nrf 2 antibody.



#### ARG43340 anti-NQO1 antibody ICC/IF image

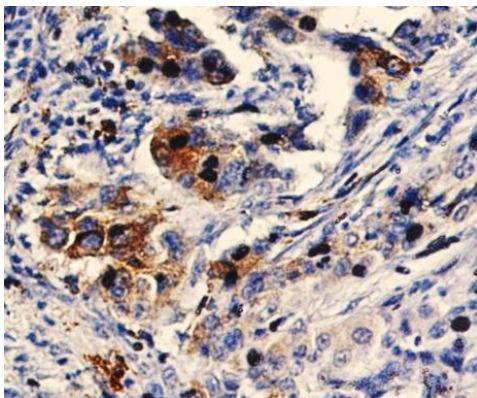
Immunofluorescence: MCF7 cells stained with ARG43340 anti-NQO1 antibody.



SH-SY5Y

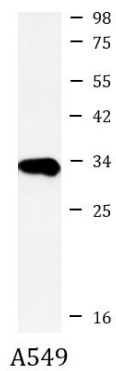
#### ARG43340 anti-NQO1 antibody WB image

Western blot: SH-SY5Y cell lysate stained with ARG43340 anti-NQO1 antibody.



#### ARG43341 anti-Heme Oxygenase 1 antibody IHC-P image

Immunohistochemistry: Paraffin-embedded Human lung cancer tissue stained with ARG43341 anti-Heme Oxygenase 1 antibody at 1:50 dilution.



#### ARG43341 anti-Heme Oxygenase 1 antibody WB image

Western blot: A549 cell lysate stained with ARG43341 anti-Heme Oxygenase 1 antibody at 1:500 dilution.