

ARG30350 Mouse Ripoptosome Antibody Panel

Package: 1 kit
Store at: -20°C

Component

Cat. No.	Component Name	Host clonality	Reactivity	Application	Package
ARG57632	anti-Caspase 8 antibody	Rabbit pAb	Hu, Ms	ICC/IF, WB	20 µl
ARG66946	anti-RIPK1 / RIP1 antibody [SQab22276]	Rabbit mAb	Ms	IHC-P, WB	20 µl
ARG66476	anti-RIPK1 / RIP1 phospho (Ser166) antibody [YJY-1-5]	Rabbit mAb	Hu, Ms, Rat	ICC/IF, IHC-Fr, IHC-P, IP, WB	20 µl
ARG41235	anti-RIPK3 / RIP3 phospho (Ser232) antibody	Rabbit pAb	Ms	WB	20 µl

Summary

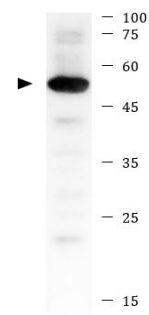
Product Description	Related news: Solutions for studying PANoptosis & PANoptosome
Target Name	Ripoptosome Antibody

Properties

Storage instruction	For continuous use, store undiluted antibody at 2-8°C for up to a week. For long-term storage, aliquot and store at -20°C or below. Storage in frost free freezers is not recommended. Avoid repeated freeze/thaw cycles. Suggest spin the vial prior to opening. The antibody solution should be gently mixed before use.
Note	For laboratory research only, not for drug, diagnostic or other use.

Bioinformation

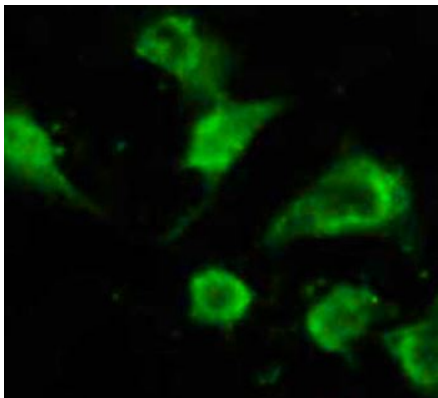
Gene Full Name	Antibody Panel for Mouse Ripoptosome
Highlight	Related Product: anti-Caspase 8 antibody; anti-RIPK1 / RIP1 antibody;



Mouse brain

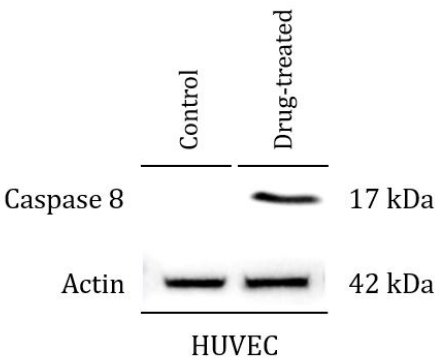
ARG57632 anti-Caspase 8 antibody WB image

Western blot: 20 µg of Mouse brain lysate stained with ARG57632 anti-Caspase 8 antibody at 1:1000 dilution.



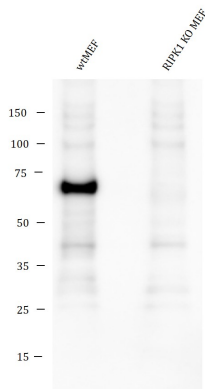
ARG57632 anti-Caspase 8 antibody ICC/IF image

Immunofluorescence: HeLa cells stained with ARG57632 anti-Caspase 8 antibody at 1:100 dilution.



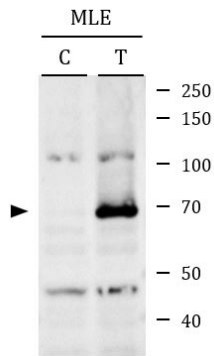
ARG57632 anti-Caspase 8 antibody WB image

Western blot: HUVEC cells were untreated or drug-treated. Cell lysates were stained with ARG57632 anti-Caspase 8 antibody.



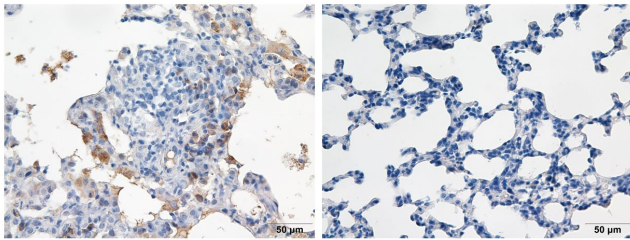
ARG66946 anti-RIPK1 / RIP1 antibody [SQab22276] WB image

Western blot: Mouse wtMEF and RIPK1 KO MEF cell lysate stained with ARG66946 anti-RIPK1 / RIP1 antibody [SQab22276] at 1:100 dilution.



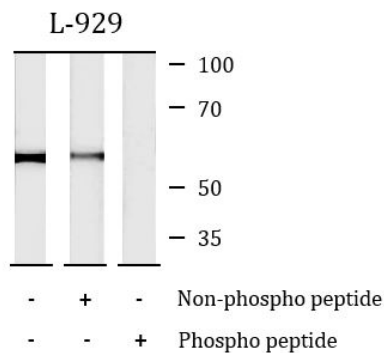
ARG66476 anti-RIPK1 / RIP1 phospho (Ser166) antibody [YJY-1-5]
WB image

Western blot: MLE cells untreated control (C) or treated with 20 ng/ml of TNF alpha, 1 μM of BV-6 and 20 μM of Z-VAD-FMK for 8 hours (T). Cell lysates were stained with ARG66476 anti-RIPK1 / RIP1 phospho (Ser166) antibody [YJY-1-5].



ARG66476 anti-RIPK1 / RIP1 phospho (Ser166) antibody [YJY-1-5]
IHC-P image

Immunohistochemistry: Paraffin-embedded rat lung tissue from rat silicosis model. Antigen Retrieval: Citrate buffer (pH 6.0) at high pressure and temperature. The tissue section was stained with ARG66476 anti-RIPK1 / RIP1 phospho (Ser166) antibody [YJY-1-5] at 1:70 dilution. The picture on the right is negative control.



ARG41235 anti-RIPK3 / RIP3 phospho (Ser232) antibody WB image

Western blot: L-929 cell lysate stained with ARG41235 anti-RIPK3 / RIP3 phospho (Ser232) antibody. Peptide treatments: 1) No treatment; 2) Non-phospho peptide and 3) Phospho peptide treatments.