

ARG30358 Mitochondrial Biogenesis Antibody Panel

Package: 1 pair

Component

Cat. No.	Component Name	Host clonality	Reactivity	Application	Package
ARG59247	anti-PGC1 alpha antibody	Rabbit pAb	Hu, Ms, Rat	ICC/IF, WB	20 µl
ARG58207	anti-NRF1 antibody	Rabbit pAb	Hu, Ms, Rat	FACS, ICC/IF, IHC-P, IP, WB	20 µl
ARG46741	anti-TFAM antibody	Rabbit pAb	Hu, Ms, Rat	ICC/IF, IHC-P, WB	20 µl

Summary

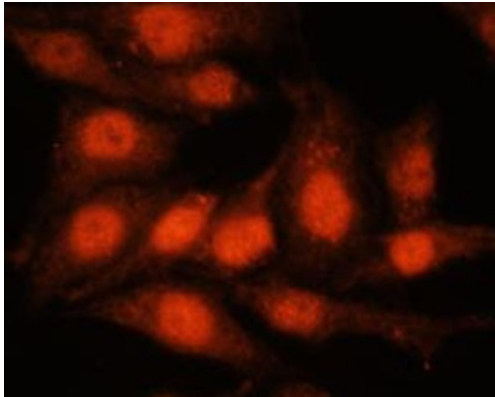
Product Description	Mitochondrial Biogenesis Antibody Panel is an all-in-one solution to make Mitochondrial Biogenesis research easy and economic.
Target Name	PGC1 alpha / NRF1 / TFAM

Properties

Storage instruction	-20°C
Note	For continuous use, store undiluted antibody at 2-8°C for up to a week. For long-term storage, aliquot and store at -20°C or below. Storage in frost free freezers is not recommended. Avoid repeated freeze/thaw cycles. Suggest spin the vial prior to opening. The antibody solution should be gently mixed before use.

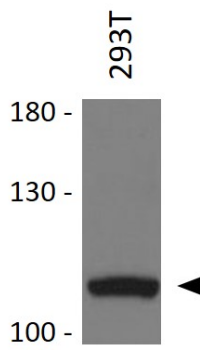
Bioinformation

Gene Full Name	Antibody Panel for Mitochondrial Biogenesis
Highlight	Related Product: anti-PGC1 alpha antibody; anti-NRF1 antibody; anti-TFAM antibody;



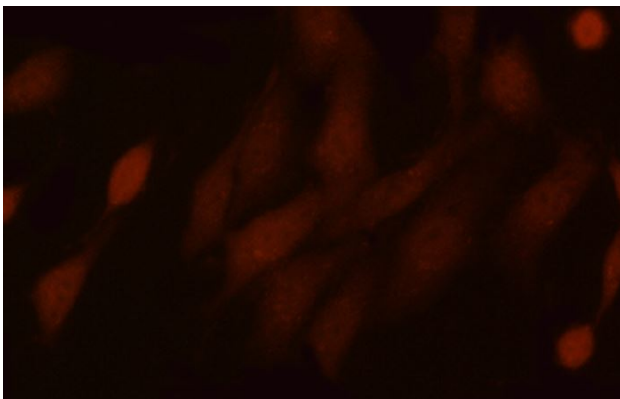
ARG59247 anti-PGC1 alpha antibody ICC/IF image

Immunofluorescence: HeLa cells stained with ARG59247 anti-PGC1 alpha antibody at 1:100 dilution.



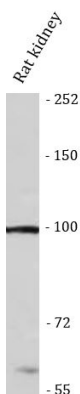
ARG59247 anti-PGC1 alpha antibody WB image

Western blot: 25 µg of 293T cell lysate stained with ARG59247 anti-PGC1 alpha antibody at 1:1000 dilution.



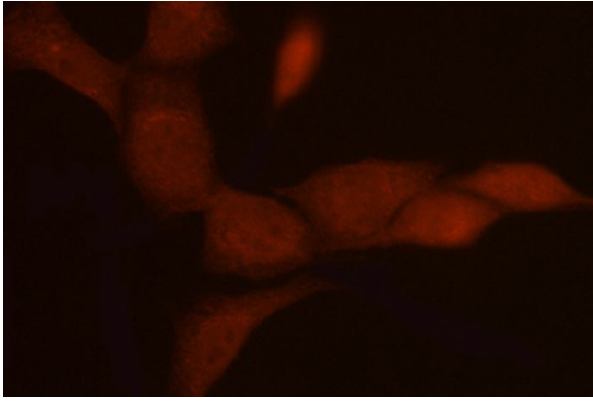
ARG59247 anti-PGC1 alpha antibody IHC-P image

Immunohistochemistry: PC-12 stained with ARG59247 anti-PGC1 alpha antibody.



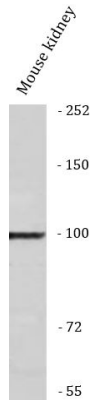
ARG59247 anti-PGC1 alpha antibody WB image

Western blot: Rat kidney stained with ARG59247 anti-PGC1 alpha antibody.



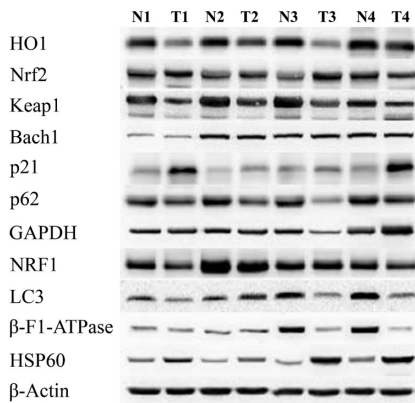
ARG59247 anti-PGC1 alpha antibody ICC/IF image

Immunofluorescence: NIH/3T3 stained with ARG59247 anti-PGC1 alpha antibody at dilution.



ARG59247 anti-PGC1 alpha antibody WB image

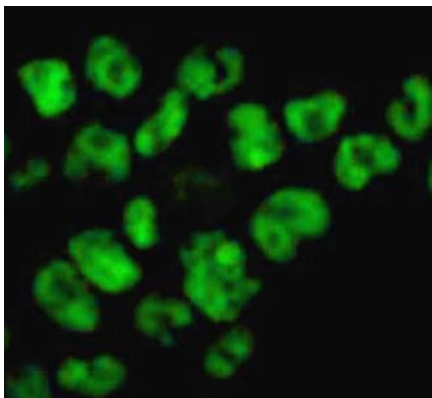
Western blot: Mouse kidney stained with ARG59247 anti-PGC1 alpha antibody.



ARG58207 anti-NRF1 antibody WB image

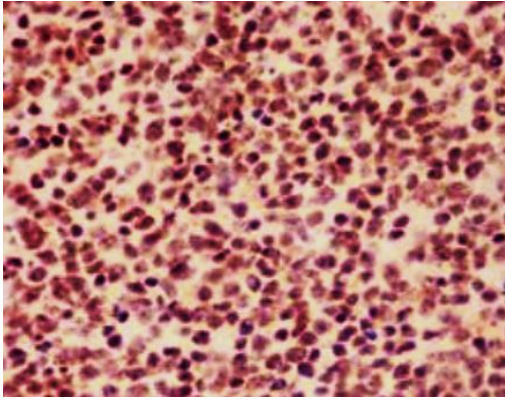
Western blot: Human CRC stained with ARG58207 anti-NRF1 antibody.

From Chang LC et al. Cancer Biomark- (2020), [doi: 10.3233/CBM-190828](https://doi.org/10.3233/CBM-190828), Fig. 2.



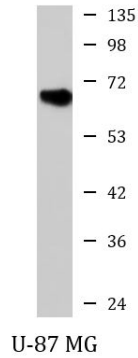
ARG58207 anti-NRF1 antibody ICC/IF image

Immunofluorescence: 293T cells stained with ARG58207 anti-NRF1 antibody at 1:250 dilution.



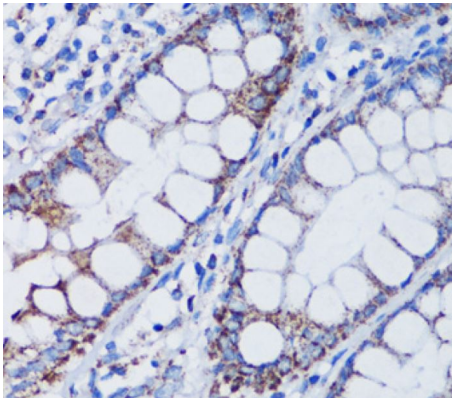
ARG58207 anti-NRF1 antibody IHC-P image

Immunohistochemistry: Paraffin-embedded tonsil tissue stained with ARG58207 anti-NRF1 antibody.



ARG58207 anti-NRF1 antibody WB image

Western blot: U-87 MG cell lysate stained with ARG58207 anti-NRF1 antibody.



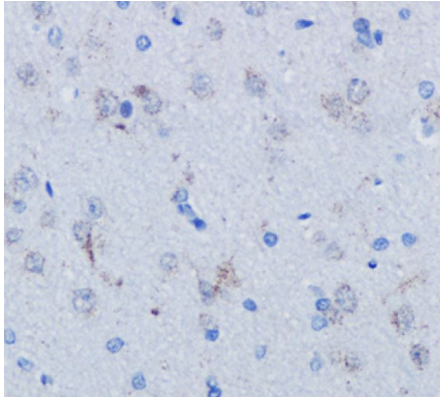
ARG46741 anti-TFAM antibody IHC-P image

Immunohistochemistry: Human colon stained with ARG46741 anti-TFAM antibody.



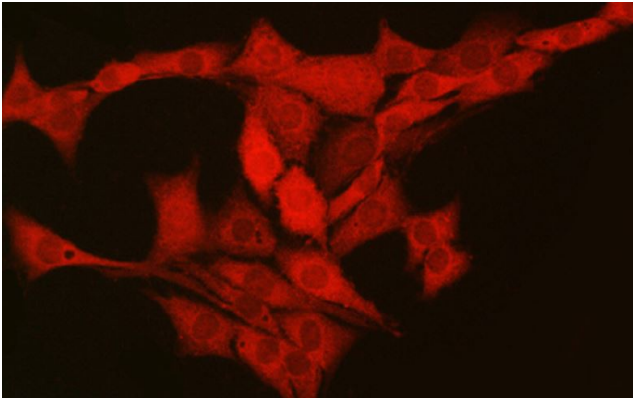
ARG46741 anti-TFAM antibody WB image

Western blot: 293T stained with ARG46741 anti-TFAM antibody.



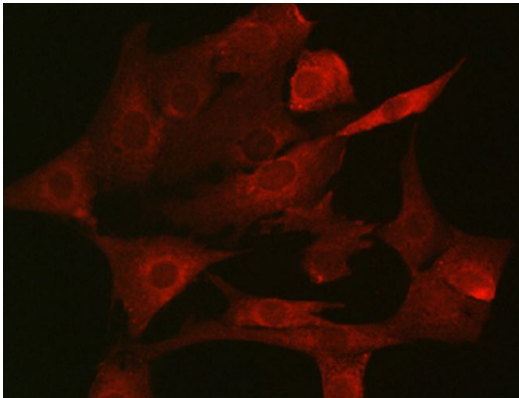
ARG46741 anti-TFAM antibody IHC-P image

Immunohistochemistry: Rat brain stained with ARG46741 anti-TFAM antibody.



ARG46741 anti-TFAM antibody ICC/IF image

Immunofluorescence: PC-12 stained with ARG46741 anti-TFAM antibody at dilution.



ARG46741 anti-TFAM antibody ICC/IF image

Immunofluorescence: NIH/3T3 stained with ARG46741 anti-TFAM antibody at dilution.
