

## ARG40006 anti-RPL27 antibody

Package: 100 µl  
Store at: -20°C

### Summary

Product Description	Rabbit Polyclonal antibody recognizes RPL27
Tested Reactivity	Hu, Ms, Rat
Tested Application	ICC/IF, WB
Host	Rabbit
Clonality	Polyclonal
Isotype	IgG
Target Name	RPL27
Species	Human
Immunogen	Recombinant fusion protein corresponding to aa. 1-136 of Human RPL27 (NP_000979.1).
Conjugation	Un-conjugated
Alternate Names	60S ribosomal protein L27; L27

### Application Instructions

Application table	Application	Dilution
	ICC/IF	1:50 - 1:100
	WB	1:500 - 1:2000
Application Note	* The dilutions indicate recommended starting dilutions and the optimal dilutions or concentrations should be determined by the scientist.	
Positive Control	Mouse thymus and A431	
Observed Size	16 kDa	

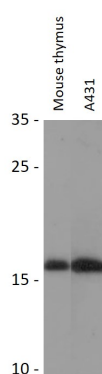
### Properties

Form	Liquid
Purification	Affinity purified.
Buffer	PBS (pH 7.3), 0.02% Sodium azide and 50% Glycerol.
Preservative	0.02% Sodium azide
Stabilizer	50% Glycerol
Storage instruction	For continuous use, store undiluted antibody at 2-8°C for up to a week. For long-term storage, aliquot and store at -20°C. Storage in frost free freezers is not recommended. Avoid repeated freeze/thaw cycles. Suggest spin the vial prior to opening. The antibody solution should be gently mixed before use.
Note	For laboratory research only, not for drug, diagnostic or other use.

## Bioinformation

Gene Symbol	RPL27
Gene Full Name	ribosomal protein L27
Background	Ribosomes, the organelles that catalyze protein synthesis, consist of a small 40S subunit and a large 60S subunit. Together these subunits are composed of 4 RNA species and approximately 80 structurally distinct proteins. This gene encodes a ribosomal protein that is a component of the 60S subunit. The protein belongs to the L27E family of ribosomal proteins. It is located in the cytoplasm. As is typical for genes encoding ribosomal proteins, there are multiple processed pseudogenes of this gene dispersed through the genome. [provided by RefSeq, Jul 2008]
Calculated Mw	16 kDa
Cellular Localization	Cytoplasm, cytosol. Cytoplasm. Rough endoplasmic reticulum. Note=Detected on cytosolic polysomes (PubMed:25957688). Detected in ribosomes that are associated with the rough endoplasmic reticulum (By similarity). [UniProt]

## Images



ARG40006 anti-RPL27 antibody WB image

Western blot: 25 µg of Mouse thymus and A431 cell lysates stained with ARG40006 anti-RPL27 antibody at 1:3000 dilution.