

ARG40036 anti-INTS10 antibody

Package: 100 µl
Store at: -20°C

Summary

Product Description	Rabbit Polyclonal antibody recognizes INTS10
Tested Reactivity	Hu, Ms
Tested Application	ICC/IF, WB
Host	Rabbit
Clonality	Polyclonal
Isotype	IgG
Target Name	INTS10
Species	Human
Immunogen	Recombinant fusion protein corresponding to aa. 451-710 of Human INTS10 (NP_060612.2).
Conjugation	Un-conjugated
Alternate Names	Int10; Integrator complex subunit 10; INT10; C8orf35

Application Instructions

Application table	Application	Dilution
	ICC/IF	1:50 - 1:200
	WB	1:500 - 1:2000
Application Note	* The dilutions indicate recommended starting dilutions and the optimal dilutions or concentrations should be determined by the scientist.	
Positive Control	Mouse brain and HeLa	
Observed Size	70 kDa	

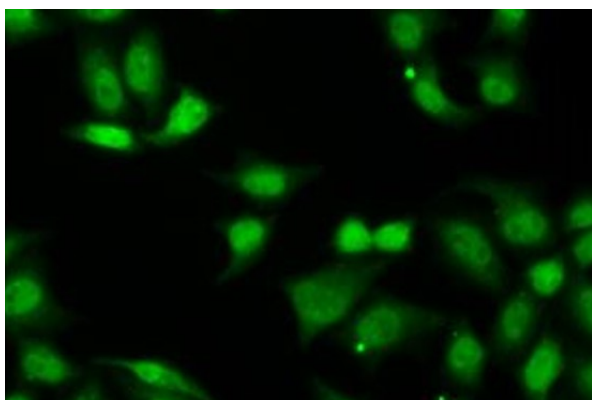
Properties

Form	Liquid
Purification	Affinity purified.
Buffer	PBS (pH 7.3), 0.02% Sodium azide and 50% Glycerol.
Preservative	0.02% Sodium azide
Stabilizer	50% Glycerol
Storage instruction	For continuous use, store undiluted antibody at 2-8°C for up to a week. For long-term storage, aliquot and store at -20°C. Storage in frost free freezers is not recommended. Avoid repeated freeze/thaw cycles. Suggest spin the vial prior to opening. The antibody solution should be gently mixed before use.
Note	For laboratory research only, not for drug, diagnostic or other use.

Bioinformation

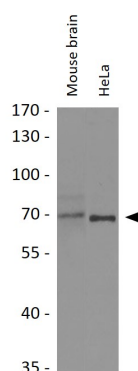
Gene Symbol	INTS10
Gene Full Name	integrator complex subunit 10
Background	INTS10 is a subunit of the Integrator complex, which associates with the C-terminal domain of RNA polymerase II large subunit (POLR2A; MIM 180660) and mediates 3-prime end processing of small nuclear RNAs U1 (RNU1; MIM 180680) and U2 (RNU2; MIM 180690) (Baillat et al., 2005 [PubMed 16239144]).[supplied by OMIM, Mar 2008]
Function	Component of the Integrator complex, a complex involved in the small nuclear RNAs (snRNA) U1 and U2 transcription and in their 3'-box-dependent processing. The Integrator complex is associated with the C-terminal domain (CTD) of RNA polymerase II largest subunit (POLR2A) and is recruited to the U1 and U2 snRNAs genes. [UniProt]
Calculated Mw	82 kDa
Cellular Localization	Nucleus. [UniProt]

Images



ARG40036 anti-INTS10 antibody ICC/IF image

Immunofluorescence: A549 cells stained with ARG40036 anti-INTS10 antibody.



ARG40036 anti-INTS10 antibody WB image

Western blot: 25 µg of Mouse brain and HeLa cell lysates stained with ARG40036 anti-INTS10 antibody at 1:1000 dilution.