

## ARG40039 anti-LIPC antibody

Package: 100 µl  
Store at: -20°C

### Summary

Product Description	Rabbit Polyclonal antibody recognizes LIPC
Tested Reactivity	Hu
Tested Application	ICC/IF, WB
Host	Rabbit
Clonality	Polyclonal
Isotype	IgG
Target Name	LIPC
Species	Human
Immunogen	Recombinant fusion protein corresponding to aa. 280-499 of Human LIPC (NP_000227.2).
Conjugation	Un-conjugated
Alternate Names	HTGL; Lipase member C; HL; Hepatic lipase; Hepatic triacylglycerol lipase; LIPH; HDLCQ12; EC 3.1.1.3

### Application Instructions

Application table	Application	Dilution
	ICC/IF	1:50 - 1:200
	WB	1:500 - 1:2000
Application Note	* The dilutions indicate recommended starting dilutions and the optimal dilutions or concentrations should be determined by the scientist.	

### Properties

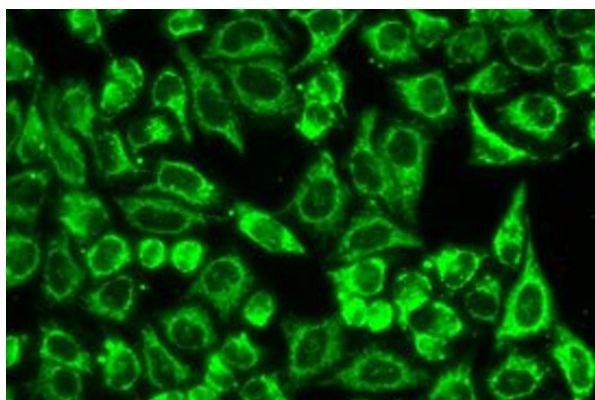
Form	Liquid
Purification	Affinity purified.
Buffer	PBS (pH 7.3), 0.02% Sodium azide and 50% Glycerol.
Preservative	0.02% Sodium azide
Stabilizer	50% Glycerol
Storage instruction	For continuous use, store undiluted antibody at 2-8°C for up to a week. For long-term storage, aliquot and store at -20°C. Storage in frost free freezers is not recommended. Avoid repeated freeze/thaw cycles. Suggest spin the vial prior to opening. The antibody solution should be gently mixed before use.
Note	For laboratory research only, not for drug, diagnostic or other use.

### Bioinformation

Gene Symbol	LIPC
Gene Full Name	lipase, hepatic
Background	LIPC encodes hepatic triglyceride lipase, which is expressed in liver. LIPC has the dual functions of triglyceride hydrolase and ligand/bridging factor for receptor-mediated lipoprotein uptake. [provided by RefSeq, Jul 2008]
Function	Hepatic lipase has the capacity to catalyze hydrolysis of phospholipids, mono-, di-, and triglycerides, and acyl-CoA thioesters. It is an important enzyme in HDL metabolism. Hepatic lipase binds heparin. [UniProt]
Calculated Mw	56 kDa
Cellular Localization	Secreted. [UniProt]

## Images

---



ARG40039 anti-LIPC antibody ICC/IF image

Immunofluorescence: A549 cells stained with ARG40039 anti-LIPC antibody.

---