

ARG40043 anti-SLC34A1 antibody

Package: 100 µl
Store at: -20°C

Summary

Product Description	Rabbit Polyclonal antibody recognizes SLC34A1
Tested Reactivity	Hu, Ms, Rat
Tested Application	WB
Host	Rabbit
Clonality	Polyclonal
Isotype	IgG
Target Name	SLC34A1
Species	Human
Immunogen	Recombinant protein of Human SLC34A1.
Conjugation	Un-conjugated
Alternate Names	Sodium/phosphate cotransporter 2A; NPHLOP1; NaPi-3; Na; SLC17A2; Sodium-dependent phosphate transport protein 2A; NPTIIa; Sodium-phosphate transport protein 2A; NaPi-2a; NPT2; FRTS2; SLC11; NAPI-3; Solute carrier family 34 member 1

Application Instructions

Application table	Application	Dilution
	WB	1:500 - 1:2000
Application Note	* The dilutions indicate recommended starting dilutions and the optimal dilutions or concentrations should be determined by the scientist.	
Positive Control	Rat lung, Mouse kidney and 293T	
Observed Size	72 kDa	

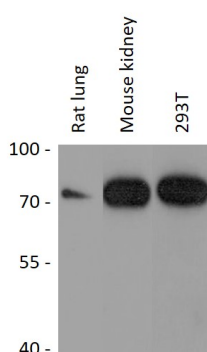
Properties

Form	Liquid
Purification	Affinity purified.
Buffer	PBS (pH 7.3), 0.02% Sodium azide and 50% Glycerol.
Preservative	0.02% Sodium azide
Stabilizer	50% Glycerol
Storage instruction	For continuous use, store undiluted antibody at 2-8°C for up to a week. For long-term storage, aliquot and store at -20°C. Storage in frost free freezers is not recommended. Avoid repeated freeze/thaw cycles. Suggest spin the vial prior to opening. The antibody solution should be gently mixed before use.
Note	For laboratory research only, not for drug, diagnostic or other use.

Bioinformation

Gene Symbol	SLC34A1
Gene Full Name	solute carrier family 34 (type II sodium/phosphate cotransporter), member 1
Background	This gene encodes a member of the type II sodium-phosphate cotransporter family. Mutations in this gene are associated with hypophosphatemia nephrolithiasis/osteoporosis 1. Alternative splicing results in multiple transcript variants. [provided by RefSeq, Nov 2009]
Function	May be involved in actively transporting phosphate into cells via Na(+) cotransport in the renal brush border membrane. Probably mediates 70-80% of the apical influx. [UniProt]
Calculated Mw	69 kDa
Cellular Localization	Apical cell membrane; Multi-pass membrane protein. [UniProt]

Images



ARG40043 anti-SLC34A1 antibody WB image

Western blot: 25 µg of Rat lung, Mouse kidney and 293T cell lysates stained with ARG40043 anti-SLC34A1 antibody at 1:1000 dilution.