

ARG40049 anti-THOC7 antibody

Package: 100 µl
Store at: -20°C

Summary

Product Description	Rabbit Polyclonal antibody recognizes THOC7
Tested Reactivity	Hu, Ms, Rat
Tested Application	WB
Host	Rabbit
Clonality	Polyclonal
Isotype	IgG
Target Name	THOC7
Species	Human
Immunogen	Recombinant fusion protein corresponding to aa. 1-204 of Human THOC7 (NP_079351.2).
Conjugation	Un-conjugated
Alternate Names	fSAP24; THO complex subunit 7 homolog; NIF3L1-binding protein 1; hTREX30; Functional spliceosome-associated protein 24; Nggi1-interacting factor 3-like protein 1-binding protein 1; NIF3L1BP1

Application Instructions

Application table	Application	Dilution
	WB	1:500 - 1:2000
Application Note	* The dilutions indicate recommended starting dilutions and the optimal dilutions or concentrations should be determined by the scientist.	
Positive Control	Rat brain, Mouse kidney and Jurkat	
Observed Size	24 kDa	

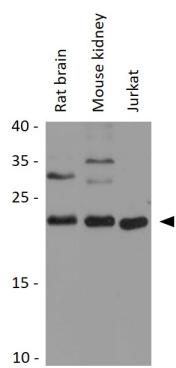
Properties

Form	Liquid
Purification	Affinity purified.
Buffer	PBS (pH 7.3), 0.02% Sodium azide and 50% Glycerol.
Preservative	0.02% Sodium azide
Stabilizer	50% Glycerol
Storage instruction	For continuous use, store undiluted antibody at 2-8°C for up to a week. For long-term storage, aliquot and store at -20°C. Storage in frost free freezers is not recommended. Avoid repeated freeze/thaw cycles. Suggest spin the vial prior to opening. The antibody solution should be gently mixed before use.
Note	For laboratory research only, not for drug, diagnostic or other use.

Bioinformation

Gene Symbol	THOC7
Gene Full Name	THO complex 7
Function	<p>Required for efficient export of polyadenylated RNA. Acts as component of the THO subcomplex of the TREX complex which is thought to couple mRNA transcription, processing and nuclear export, and which specifically associates with spliced mRNA and not with unspliced pre-mRNA. TREX is recruited to spliced mRNAs by a transcription-independent mechanism, binds to mRNA upstream of the exon-junction complex (EJC) and is recruited in a splicing- and cap-dependent manner to a region near the 5' end of the mRNA where it functions in mRNA export to the cytoplasm via the TAP/NFX1 pathway.</p> <p>The TREX complex is essential for the export of Kaposi's sarcoma-associated herpesvirus (KSHV) intronless mRNAs and infectious virus production. [UniProt]</p>
Calculated Mw	24 kDa
Cellular Localization	Cytoplasm. Nucleus. Nucleus speckle. Note=Interaction with THOC5 is required for nuclear localization. [UniProt]

Images



ARG40049 anti-THOC7 antibody WB image

Western blot: 25 µg of Rat brain, Mouse kidney and Jurkat cell lysates stained with ARG40049 anti-THOC7 antibody at 1:3000 dilution.