

ARG40067 anti-SPSB1 antibody

Package: 100 µl
Store at: -20°C

Summary

Product Description	Rabbit Polyclonal antibody recognizes SPSB1
Tested Reactivity	Hu, Ms, Rat
Tested Application	WB
Host	Rabbit
Clonality	Polyclonal
Isotype	IgG
Target Name	SPSB1
Species	Human
Immunogen	Recombinant fusion protein corresponding to aa. 1-60 of Human SPSB1 (NP_079382.2).
Conjugation	Un-conjugated
Alternate Names	SSB1; SPRY domain-containing SOCS box protein 1; SSB-1

Application Instructions

Application table	Application	Dilution
	WB	1:500 - 1:2000
Application Note	* The dilutions indicate recommended starting dilutions and the optimal dilutions or concentrations should be determined by the scientist.	
Positive Control	Rat testis, Mouse spleen and A375	
Observed Size	31 kDa	

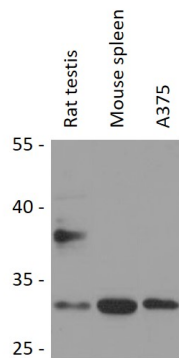
Properties

Form	Liquid
Purification	Affinity purified.
Buffer	PBS (pH 7.3), 0.02% Sodium azide and 50% Glycerol.
Preservative	0.02% Sodium azide
Stabilizer	50% Glycerol
Storage instruction	For continuous use, store undiluted antibody at 2-8°C for up to a week. For long-term storage, aliquot and store at -20°C. Storage in frost free freezers is not recommended. Avoid repeated freeze/thaw cycles. Suggest spin the vial prior to opening. The antibody solution should be gently mixed before use.
Note	For laboratory research only, not for drug, diagnostic or other use.

Bioinformation

Gene Symbol	SPSB1
Gene Full Name	spla/ryanodine receptor domain and SOCS box containing 1
Function	Probable substrate recognition component of a SCF-like ECS (Elongin BC-CUL2/5-SOCS-box protein) E3 ubiquitin-protein ligase complex which mediates the ubiquitination and subsequent proteasomal degradation of target proteins. [UniProt]
Calculated Mw	31 kDa
Cellular Localization	Cytoplasm. [UniProt]

Images



ARG40067 anti-SPSB1 antibody WB image

Western blot: 25 µg of Rat testis, Mouse spleen and A375 cell lysates stained with ARG40067 anti-SPSB1 antibody at 1:1000 dilution.