

ARG40101 anti-SLC7A1 / CAT1 antibody

Package: 100 µl
Store at: -20°C

Summary

Product Description	Rabbit Polyclonal antibody recognizes SLC7A1 / CAT1
Tested Reactivity	Hu, Ms, Rat
Tested Application	IHC-P, WB
Host	Rabbit
Clonality	Polyclonal
Isotype	IgG
Target Name	SLC7A1 / CAT1
Species	Human
Immunogen	Synthetic peptide of Human SLC7A1.
Conjugation	Un-conjugated
Alternate Names	Ecotropic retroviral leukemia receptor homolog; ERR; ATRC1; Solute carrier family 7 member 1; High affinity cationic amino acid transporter 1; CAT-1; System Y+ basic amino acid transporter; CAT1; Ecotropic retrovirus receptor homolog; REC1L; HCAT1

Application Instructions

Application table	Application	Dilution
	IHC-P	1:50 - 1:200
	WB	1:500 - 1:2000
Application Note	* The dilutions indicate recommended starting dilutions and the optimal dilutions or concentrations should be determined by the scientist.	
Positive Control	Rat brain, Mouse testis and Jurkat	
Observed Size	60 kDa	

Properties

Form	Liquid
Purification	Affinity purified.
Buffer	PBS (pH 7.3), 0.02% Sodium azide and 50% Glycerol.
Preservative	0.02% Sodium azide
Stabilizer	50% Glycerol
Storage instruction	For continuous use, store undiluted antibody at 2-8°C for up to a week. For long-term storage, aliquot and store at -20°C. Storage in frost free freezers is not recommended. Avoid repeated freeze/thaw cycles. Suggest spin the vial prior to opening. The antibody solution should be gently mixed before use.

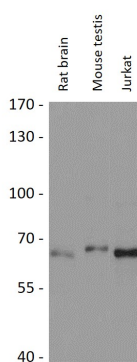
Note

For laboratory research only, not for drug, diagnostic or other use.

Bioinformation

Gene Symbol	SLC7A1
Gene Full Name	solute carrier family 7 (cationic amino acid transporter, γ^+ system), member 1
Function	High-affinity, low capacity permease involved in the transport of the cationic amino acids (arginine, lysine and ornithine) in non-hepatic tissues. May also function as an ecotropic retroviral leukemia receptor. [UniProt]
Calculated Mw	68 kDa
Cellular Localization	Cell membrane; Multi-pass membrane protein. [UniProt]

Images



ARG40101 anti-SLC7A1 / CAT1 antibody WB image

Western blot: 25 μ g of Rat brain, Mouse testis and Jurkat cell lysates stained with ARG40101 anti-SLC7A1 / CAT1 antibody at 1:1000 dilution.