

## ARG40127 anti-CRMP5 antibody

Package: 100 µl  
Store at: -20°C

### Summary

Product Description	Rabbit Polyclonal antibody recognizes CRMP5
Tested Reactivity	Hu, Ms, Rat
Tested Application	ICC/IF, WB
Host	Rabbit
Clonality	Polyclonal
Isotype	IgG
Target Name	CRMP5
Species	Human
Immunogen	KLH-conjugated synthetic peptide corresponding to aa. 478-512 of Human CRMP5.
Conjugation	Un-conjugated
Alternate Names	Collapsin response mediator protein 5; DRP-5; Dihydropyrimidinase-related protein 5; CRMP-5; Ulip6; UNC33-like phosphoprotein 6; ULIP-6; CRAM; CRMP5; CRMP3-associated molecule

### Application Instructions

Application table	Application	Dilution
	ICC/IF	1:25
	WB	1:1000 - 1:2000
Application Note	* The dilutions indicate recommended starting dilutions and the optimal dilutions or concentrations should be determined by the scientist.	
Positive Control	SH-SY5Y	

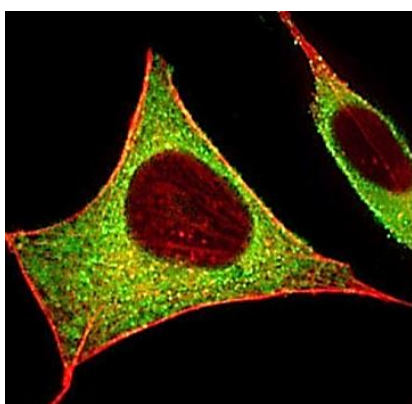
### Properties

Form	Liquid
Purification	Purification with Protein A and immunogen peptide.
Buffer	PBS and 0.09% (W/V) Sodium azide.
Preservative	0.09% (W/V) Sodium azide.
Storage instruction	For continuous use, store undiluted antibody at 2-8°C for up to a week. For long-term storage, aliquot and store at -20°C or below. Storage in frost free freezers is not recommended. Avoid repeated freeze/thaw cycles. Suggest spin the vial prior to opening. The antibody solution should be gently mixed before use.
Note	For laboratory research only, not for drug, diagnostic or other use.

## Bioinformation

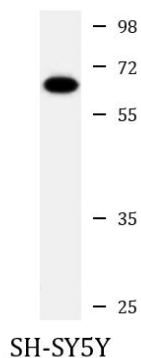
Gene Symbol	DPYSL5
Gene Full Name	dihydropyrimidinase-like 5
Background	This gene encodes a member of the CRMP (collapsing response mediator protein) family thought to be involved in neural development. Antibodies to the encoded protein were found in some patients with neurologic symptoms who had paraneoplastic syndrome. A pseudogene of this gene is found on chromosome 11. Multiple alternatively spliced variants, encoding the same protein, have been identified. [provided by RefSeq, Dec 2011]
Function	May have a function in neuronal differentiation and/or axon growth. [UniProt]
Calculated Mw	61 kDa
Cellular Localization	Cytoplasm. [UniProt]

## Images



ARG40127 anti-CRMP5 antibody ICC/IF image

Immunofluorescence: 4% paraformaldehyde-fixed, 0.1% Triton X-100 permeabilized SH-SY5Y cells stained with ARG40127 anti-CRMP5 antibody (green) at 1:25 dilution. Cytoplasmic actin is detected with Dylight® 554 Phalloidin at 1:100 dilution (red).



ARG40127 anti-CRMP5 antibody WB image

Western blot: 20 µg of SH-SY5Y cell lysate stained with ARG40127 anti-CRMP5 antibody at 1:2000 dilution.