

ARG40133 anti-CaMKI gamma antibody

Package: 100 µl
Store at: -20°C

Summary

Product Description	Rabbit Polyclonal antibody recognizes CaMKI gamma
Tested Reactivity	Hu, Ms
Predict Reactivity	Rat
Tested Application	IHC-P, WB
Host	Rabbit
Clonality	Polyclonal
Isotype	IgG
Target Name	CaMKI gamma
Species	Human
Immunogen	KLH-conjugated synthetic peptide corresponding to aa. 211-241 of Human CaMKI gamma.
Conjugation	Un-conjugated
Alternate Names	CaM-KI gamma; CaM kinase IG; CaMK-like CREB kinase III; EC 2.7.11.17; CLICK III; CaMKI gamma; CaM kinase I gamma; VWS1; Calcium/calmodulin-dependent protein kinase type 1G; dJ272L16.1; CLICK3; CaMKIG; CLICKIII

Application Instructions

Application table	Application	Dilution
	IHC-P	1:10 - 1:50
	WB	1:1000
Application Note	* The dilutions indicate recommended starting dilutions and the optimal dilutions or concentrations should be determined by the scientist.	
Positive Control	HL-60	

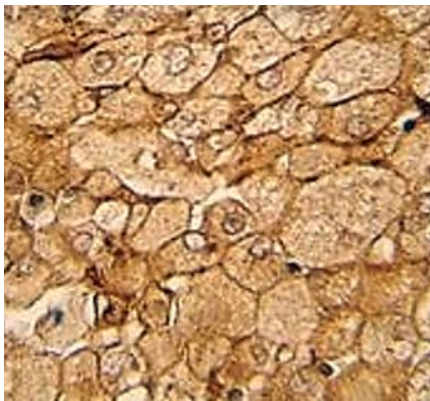
Properties

Form	Liquid
Purification	Saturated Ammonium Sulfate (SAS) precipitation followed by dialysis against PBS.
Buffer	PBS and 0.09% (W/V) Sodium azide.
Preservative	0.09% (W/V) Sodium azide.
Storage instruction	For continuous use, store undiluted antibody at 2-8°C for up to a week. For long-term storage, aliquot and store at -20°C or below. Storage in frost free freezers is not recommended. Avoid repeated freeze/thaw cycles. Suggest spin the vial prior to opening. The antibody solution should be gently mixed before use.
Note	For laboratory research only, not for drug, diagnostic or other use.

Bioinformation

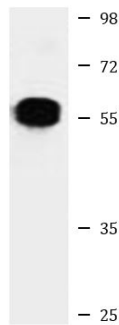
Gene Symbol	CAMK1G
Gene Full Name	calcium/calmodulin-dependent protein kinase IG
Background	This gene encodes a protein similar to calcium/calmodulin dependent protein kinase, however, its exact function is not known. [provided by RefSeq, Jul 2008]
Function	Calcium/calmodulin-dependent protein kinase belonging to a proposed calcium-triggered signaling cascade. In vitro phosphorylates transcription factor CREB1 (By similarity). [UniProt]
Calculated Mw	53 kDa
PTM	May be prenylated on Cys-473. [UniProt]
Cellular Localization	Cytoplasm. Golgi apparatus membrane; Peripheral membrane protein. Cell membrane; Peripheral membrane protein. [UniProt]

Images



ARG40133 anti-CaMKI gamma antibody IHC-P image

Immunohistochemistry: Formalin-fixed and paraffin-embedded Human prostata carcinoma stained with ARG40133 anti-CaMKI gamma antibody.



HL-60

ARG40133 anti-CaMKI gamma antibody WB image

Western blot: 35 µg of HL-60 cell lysate stained with ARG40133 anti-CaMKI gamma antibody.