

## ARG40137 anti-LIPC antibody

Package: 100 µl  
Store at: -20°C

### Summary

Product Description	Rabbit Polyclonal antibody recognizes LIPC
Tested Reactivity	Hu
Tested Application	FACS, IHC-P, WB
Host	Rabbit
Clonality	Polyclonal
Isotype	IgG
Target Name	LIPC
Species	Human
Immunogen	KLH-conjugated synthetic peptide between aa. 310-338 of Human LIPC.
Conjugation	Un-conjugated
Alternate Names	HTGL; Lipase member C; HL; Hepatic lipase; Hepatic triacylglycerol lipase; LIPH; HDLCQ12; EC 3.1.1.3

### Application Instructions

Application table	Application	Dilution
	FACS	1:10 - 1:50
	IHC-P	1:10 - 1:50
	WB	1:500
Application Note	* The dilutions indicate recommended starting dilutions and the optimal dilutions or concentrations should be determined by the scientist.	
Positive Control	HT-29	

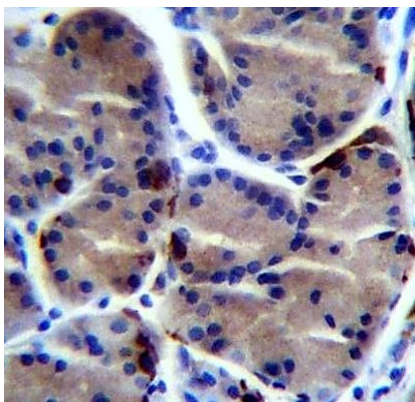
### Properties

Form	Liquid
Purification	Purification with Protein A and immunogen peptide.
Buffer	PBS and 0.09% (W/V) Sodium azide.
Preservative	0.09% (W/V) Sodium azide.
Storage instruction	For continuous use, store undiluted antibody at 2-8°C for up to a week. For long-term storage, aliquot and store at -20°C or below. Storage in frost free freezers is not recommended. Avoid repeated freeze/thaw cycles. Suggest spin the vial prior to opening. The antibody solution should be gently mixed before use.
Note	For laboratory research only, not for drug, diagnostic or other use.

Bioinformation

Gene Symbol	LIPC
Gene Full Name	lipase, hepatic
Background	LIPC encodes hepatic triglyceride lipase, which is expressed in liver. LIPC has the dual functions of triglyceride hydrolase and ligand/bridging factor for receptor-mediated lipoprotein uptake. [provided by RefSeq, Jul 2008]
Function	Hepatic lipase has the capacity to catalyze hydrolysis of phospholipids, mono-, di-, and triglycerides, and acyl-CoA thioesters. It is an important enzyme in HDL metabolism. Hepatic lipase binds heparin. [UniProt]
Calculated Mw	56 kDa
Cellular Localization	Secreted. [UniProt]

Images



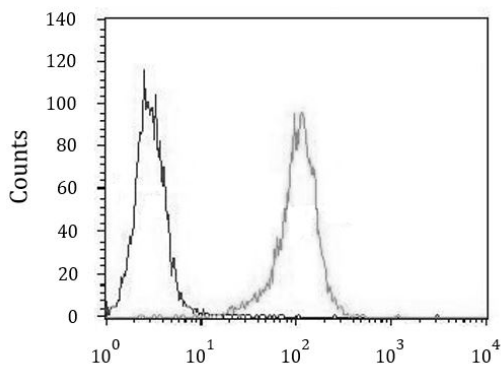
ARG40137 anti-LIPC antibody IHC-P image

Immunohistochemistry: Formalin-fixed and paraffin-embedded Human stomach stained with ARG40137 anti-LIPC antibody.



ARG40137 anti-LIPC antibody WB image

Western blot: 20 µg of HT-29 whole cell lysate stained with ARG40137 anti-LIPC antibody at 1:500 dilution.



ARG40137 anti-LIPC antibody FACS image

Flow Cytometry: K562 cells stained with ARG40137 anti-LIPC antibody (right histogram) or without primary antibody as control (left histogram), followed by incubation with FITC labelled secondary antibody.