

## ARG40145 anti-C1GALT1C1 / COSMC antibody

Package: 100 µl  
Store at: -20°C

### Summary

Product Description	Rabbit Polyclonal antibody recognizes C1GALT1C1 / COSMC
Tested Reactivity	Hu
Tested Application	WB
Host	Rabbit
Clonality	Polyclonal
Isotype	IgG
Target Name	C1GALT1C1 / COSMC
Species	Human
Immunogen	KLH-conjugated synthetic peptide between aa. 26-60 of Human C1GALT1C1.
Conjugation	Un-conjugated
Alternate Names	TNPS; C1GalT2; Core 1 beta3-galactosyltransferase-specific molecular chaperone; COSMC; C1GALT2; HSPC067; Core 1 beta3-Gal-T2; Core 1 beta1,3-galactosyltransferase 2; MST143; C1GALT1-specific chaperone 1; C1Gal-T2; C38H2-L1; C38H2-like protein 1

### Application Instructions

Application table	<table> <tr> <th>Application</th><th>Dilution</th></tr> <tr> <td>WB</td><td>1:2000</td></tr> </table>	Application	Dilution	WB	1:2000
Application	Dilution				
WB	1:2000				
Application Note	* The dilutions indicate recommended starting dilutions and the optimal dilutions or concentrations should be determined by the scientist.				
Positive Control	HeLa				

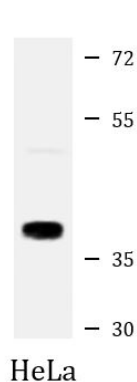
### Properties

Form	Liquid
Purification	Purification with Protein A and immunogen peptide.
Buffer	PBS and 0.09% (W/V) Sodium azide.
Preservative	0.09% (W/V) Sodium azide.
Storage instruction	For continuous use, store undiluted antibody at 2-8°C for up to a week. For long-term storage, aliquot and store at -20°C or below. Storage in frost free freezers is not recommended. Avoid repeated freeze/thaw cycles. Suggest spin the vial prior to opening. The antibody solution should be gently mixed before use.
Note	For laboratory research only, not for drug, diagnostic or other use.

### Bioinformation

Gene Symbol	C1GALT1C1
Gene Full Name	C1GALT1-specific chaperone 1
Background	This gene encodes a type II transmembrane protein that is similar to the core 1 beta1,3-galactosyltransferase 1, which catalyzes the synthesis of the core-1 structure, also known as Thomsen-Friedenreich antigen, on O-linked glycans. This gene product lacks the galactosyltransferase activity itself, but instead acts as a molecular chaperone required for the folding, stability and full activity of the core 1 beta1,3-galactosyltransferase 1. Mutations in this gene have been associated with Tn syndrome. Alternatively spliced transcript variants encoding the same protein have been identified. [provided by RefSeq, Dec 2009]
Function	Probable chaperone required for the generation of 1 O-glycan Gal-beta1-3GalNAc-alpha1-Ser/Thr (T antigen), which is a precursor for many extended O-glycans in glycoproteins. Probably acts as a specific molecular chaperone assisting the folding/stability of core 1 beta-3-galactosyltransferase (C1GALT1). [UniProt]
Calculated Mw	36 kDa
Cellular Localization	Membrane; Single-pass type II membrane protein. [UniProt]

## Images



ARG40145 anti-C1GALT1C1 / COSMC antibody WB image

Western blot: 20 µg of HeLa whole cell lysate stained with ARG40145 anti-C1GALT1C1 / COSMC antibody at 1:2000 dilution.