

ARG40172 anti-PHF11 antibody

Package: 50 µg
Store at: -20°C

Summary

Product Description	Goat Polyclonal antibody recognizes PHF11
Tested Reactivity	Hu
Tested Application	WB
Host	Goat
Clonality	Polyclonal
Isotype	IgG
Target Name	PHF11
Species	Human
Immunogen	Synthetic peptide around the internal region of Human PHF11. (C-KIHASQQRWQQLKE, NP_001035533.1; NP_001035534.1)
Conjugation	Un-conjugated
Alternate Names	NY-REN-34; APY; IGHER; IGER; Renal carcinoma antigen NY-REN-34; NYREN34; PHD finger protein 11; IGEL; BCAP; BRCA1 C-terminus-associated protein

Application Instructions

Application table	Application	Dilution
	WB	1 - 3 µg/ml
Application Note	WB: Recommend incubate at RT for 1h. * The dilutions indicate recommended starting dilutions and the optimal dilutions or concentrations should be determined by the scientist.	
Observed Size	37 kDa	

Properties

Form	Liquid
Purification	Affinity purified
Buffer	Tris saline (pH 7.3), 0.02% Sodium azide and 0.5% BSA.
Preservative	0.02% Sodium azide
Stabilizer	0.5% BSA
Concentration	0.5 mg/ml
Storage instruction	For continuous use, store undiluted antibody at 2-8°C for up to a week. For long-term storage, aliquot and store at -20°C or below. Storage in frost free freezers is not recommended. Avoid repeated freeze/thaw cycles. Suggest spin the vial prior to opening. The antibody solution should be gently mixed before use.

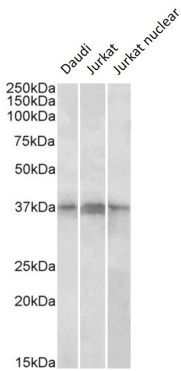
Note

For laboratory research only, not for drug, diagnostic or other use.

Bioinformation

Gene Symbol	PHF11
Gene Full Name	PHD finger protein 11
Function	Positive regulator of Th1-type cytokine gene expression. [UniProt]
Calculated Mw	38 kDa
Cellular Localization	Nucleus. [UniProt]

Images



ARG40172 anti-PHF11 antibody WB image

Western blot: 35 µg of Daudi, Jurkat and Jurkat nuclear lysates (in RIPA buffer) stained with ARG40172 anti-PHF11 antibody at 1 µg/ml dilution and incubated at RT for 1 hour.