

ARG40227 anti-CD21 antibody

Package: 100 µl
Store at: -20°C

Summary

Product Description	Rabbit Polyclonal antibody recognizes CD21
Tested Reactivity	Hu, Ms
Tested Application	FACS, ICC/IF, IHC-P, IP, WB
Host	Rabbit
Clonality	Polyclonal
Isotype	IgG
Target Name	CD21
Species	Human
Immunogen	Synthetic peptide derived from Human CD21.
Conjugation	Un-conjugated
Alternate Names	Cr2; Complement C3d receptor; C3DR; CD21; CD antigen CD21; Complement receptor type 2; SLEB9; CR; CVID7; Epstein-Barr virus receptor; EBV receptor

Application Instructions

Application table	Application	Dilution
	FACS	1:50
	ICC/IF	1:50 - 1:200
	IHC-P	1:50 - 1:200
	IP	1:50
	WB	1:1000 - 1:5000
	* The dilutions indicate recommended starting dilutions and the optimal dilutions or concentrations should be determined by the scientist.	
Application Note		
Positive Control	Raji	

Properties

Form	Liquid
Purification	Affinity purified.
Buffer	PBS (pH 7.4), 0.02% Sodium azide and 50% Glycerol.
Preservative	0.02% Sodium azide
Stabilizer	50% Glycerol
Storage instruction	For continuous use, store undiluted antibody at 2-8°C for up to a week. For long-term storage, aliquot and store at -20°C. Storage in frost free freezers is not recommended. Avoid repeated freeze/thaw

cycles. Suggest spin the vial prior to opening. The antibody solution should be gently mixed before use.

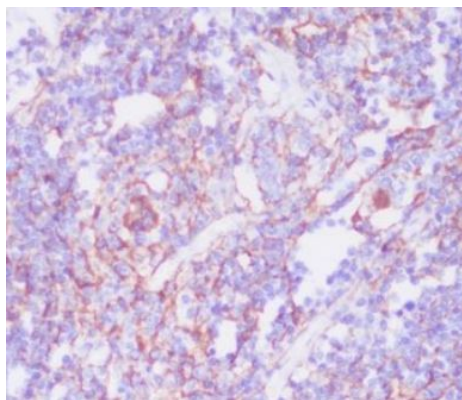
Note

For laboratory research only, not for drug, diagnostic or other use.

Bioinformation

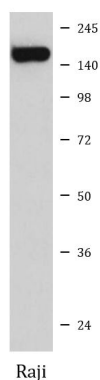
Gene Symbol	CR2
Gene Full Name	complement component (3d/Epstein Barr virus) receptor 2
Background	This gene encodes a membrane protein, which functions as a receptor for Epstein-Barr virus (EBV) binding on B and T lymphocytes. Genetic variations in this gene are associated with susceptibility to systemic lupus erythematosus type 9 (SLEB9). Alternatively spliced transcript variants encoding different isoforms have been found for this gene.[provided by RefSeq, Sep 2009]
Function	Receptor for complement C3Dd, for the Epstein-Barr virus on human B-cells and T-cells and for HNRPU. Participates in B lymphocytes activation. [UniProt]
Calculated Mw	113 kDa
Cellular Localization	Membrane; Single-pass type I membrane protein. [UniProt]

Images



ARG40227 anti-CD21 antibody IHC-P image

Immunohistochemistry: Paraffin-embedded Human spleen stained with ARG40227 anti-CD21 antibody.



ARG40227 anti-CD21 antibody WB image

Western blot: Raji cell lysate stained with ARG40227 anti-CD21 antibody.