

## ARG40229 anti-Cytokeratin 1 antibody

Package: 100 µl  
Store at: -20°C

### Summary

Product Description	Rabbit Polyclonal antibody recognizes Cytokeratin 1
Tested Reactivity	Hu, Ms, Rat
Tested Application	IHC-P, WB
Host	Rabbit
Clonality	Polyclonal
Isotype	IgG
Target Name	Cytokeratin 1
Species	Human
Immunogen	Synthetic peptide derived from Human Cytokeratin 1.
Conjugation	Un-conjugated
Alternate Names	67 kDa cytokeratin; KRT1A; EPPK; Keratin, type II cytoskeletal 1; EHK1; K1; Keratin-1; CK1; Cytokeratin-1; Hair alpha protein; Type-II keratin Kb1; CK-1; NEPPK; EHK

### Application Instructions

Application table	Application	Dilution
	IHC-P	1:50 - 1:200
	WB	1:5000 - 1:20000
Application Note	* The dilutions indicate recommended starting dilutions and the optimal dilutions or concentrations should be determined by the scientist.	
Positive Control	Human skin	
Observed Size	~ 66 kDa	

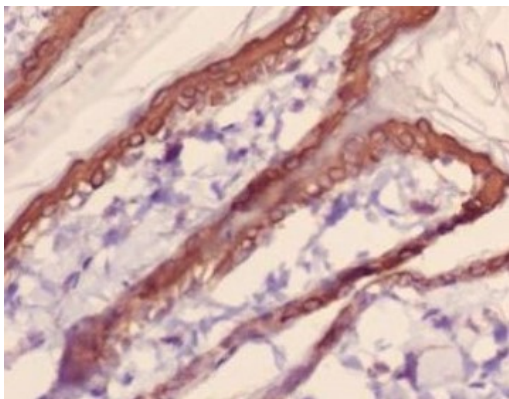
### Properties

Form	Liquid
Purification	Affinity purified.
Buffer	PBS (pH 7.4), 0.02% Sodium azide and 50% Glycerol.
Preservative	0.02% Sodium azide
Stabilizer	50% Glycerol
Storage instruction	For continuous use, store undiluted antibody at 2-8°C for up to a week. For long-term storage, aliquot and store at -20°C. Storage in frost free freezers is not recommended. Avoid repeated freeze/thaw cycles. Suggest spin the vial prior to opening. The antibody solution should be gently mixed before use.
Note	For laboratory research only, not for drug, diagnostic or other use.

Bioinformation

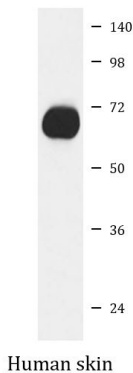
Gene Symbol	KRT1
Gene Full Name	keratin 1, type II
Background	Cytokeratin 1 is a member of the keratin gene family. The type II cytokeratins consist of basic or neutral proteins which are arranged in pairs of heterotypic keratin chains coexpressed during differentiation of simple and stratified epithelial tissues. This type II cytokeratin is specifically expressed in the spinous and granular layers of the epidermis with family member KRT10 and mutations in these genes have been associated with bullous congenital ichthyosiform erythroderma. The type II cytokeratins are clustered in a region of chromosome 12q12-q13. [provided by RefSeq, Jul 2008]
Function	Cytokeratin 1 may regulate the activity of kinases such as PKC and SRC via binding to integrin beta-1 (ITB1) and the receptor of activated protein C kinase 1 (RACK1). In complex with C1QBP is a high affinity receptor for kininogen-1/HMWK. [UniProt]
Research Area	Signaling Transduction antibody; Carcinoma Marker antibody
Calculated Mw	66 kDa
PTM	Undergoes deimination of some arginine residues (citrullination). [UniProt]
Cellular Localization	Cell membrane. Note=Located on plasma membrane of neuroblastoma NMB7 cells. [UniProt]

Images



ARG40229 anti-Cytokeratin 1 antibody IHC-P image

Immunohistochemistry: Paraffin-embedded Rat skin stained with ARG40229 anti-Cytokeratin 1 antibody.



ARG40229 anti-Cytokeratin 1 antibody WB image

Western blot: Human skin lysate stained with ARG40229 anti-Cytokeratin 1 antibody.