

ARG40231 anti-CD56 / NCAM antibody

Package: 100 µl
Store at: -20°C

Summary

Product Description	Rabbit Polyclonal antibody recognizes CD56 / NCAM
Tested Reactivity	Hu
Tested Application	FACS, ICC/IF, IHC-P, IP, WB
Host	Rabbit
Clonality	Polyclonal
Isotype	IgG
Target Name	CD56 / NCAM
Species	Human
Immunogen	Synthetic peptide derived from Human CD56 / NCAM.
Conjugation	Un-conjugated
Alternate Names	CD56; NCAM; CD antigen CD56; N-CAM-1; MSK39; NCAM-1; Neural cell adhesion molecule 1

Application Instructions

Application table	Application	Dilution
	FACS	1:100
	ICC/IF	1:50 - 1:200
	IHC-P	1:50 - 1:200
	IP	1:50
	WB	1:1000 - 1:5000
Application Note	* The dilutions indicate recommended starting dilutions and the optimal dilutions or concentrations should be determined by the scientist.	
Positive Control	SH-SY5Y	

Properties

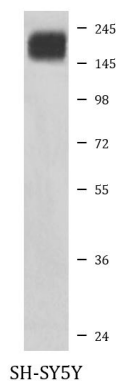
Form	Liquid
Purification	Affinity purified.
Buffer	PBS (pH 7.4), 0.02% Sodium azide and 50% Glycerol.
Preservative	0.02% Sodium azide
Stabilizer	50% Glycerol
Storage instruction	For continuous use, store undiluted antibody at 2-8°C for up to a week. For long-term storage, aliquot and store at -20°C. Storage in frost free freezers is not recommended. Avoid repeated freeze/thaw cycles. Suggest spin the vial prior to opening. The antibody solution should be gently mixed before use.

Note For laboratory research only, not for drug, diagnostic or other use.

Bioinformation

Gene Symbol	NCAM1
Gene Full Name	neural cell adhesion molecule 1
Background	This gene encodes a cell adhesion protein which is a member of the immunoglobulin superfamily. The encoded protein is involved in cell-to-cell interactions as well as cell-matrix interactions during development and differentiation. The encoded protein has been shown to be involved in development of the nervous system, and for cells involved in the expansion of T cells and dendritic cells which play an important role in immune surveillance. Alternative splicing results in multiple transcript variants. [provided by RefSeq, Jun 2011]
Function	This protein is a cell adhesion molecule involved in neuron-neuron adhesion, neurite fasciculation, outgrowth of neurites, etc. [UniProt]
Highlight	Related products: CD56 antibodies ; CD56 ELISA Kits ; CD56 Duos / Panels ; Anti-Rabbit IgG secondary antibodies ; Related news: Tumor-Infiltrating Lymphocytes (TILs)
Research Area	Developmental Biology antibody; Neuroscience antibody; General Lymphocyte Marker Study antibody; Natural killer cells antibody
Calculated Mw	95 kDa
Cellular Localization	Isoform 1: Cell membrane; Single-pass type I membrane protein. Isoform 2: Cell membrane; Single-pass type I membrane protein. Isoform 3: Cell membrane; Lipid-anchor, GPI-anchor. Isoform 4: Cell membrane; Lipid-anchor, GPI-anchor. Isoform 5: Secreted. Isoform 6: Secreted. [UniProt]

Images



ARG40231 anti-CD56 / NCAM antibody WB image

Western blot: SH-SY5Y cell lysate stained with ARG40231 anti-CD56 / NCAM antibody.