

ARG40234 anti-CD7 antibody

Package: 100 µl
Store at: -20°C

Summary

Product Description	Rabbit Polyclonal antibody recognizes CD7
Tested Reactivity	Hu
Tested Application	ICC/IF, IHC-P, IP, WB
Host	Rabbit
Clonality	Polyclonal
Isotype	IgG
Target Name	CD7
Species	Human
Immunogen	Synthetic peptide derived from Human CD7.
Conjugation	Un-conjugated
Alternate Names	TP41; Tp40; T-cell antigen CD7; CD antigen CD7; T-cell leukemia antigen; LEU-9; T-cell surface antigen Leu-9; GP40

Application Instructions

Application table	Application	Dilution
	ICC/IF	1:50 - 1:200
	IHC-P	1:50 - 1:200
	IP	1:50
	WB	1:500 - 1:2000
Application Note	* The dilutions indicate recommended starting dilutions and the optimal dilutions or concentrations should be determined by the scientist.	
Positive Control	PBMC	
Observed Size	~ 36 kDa	

Properties

Form	Liquid
Purification	Affinity purified.
Buffer	PBS (pH 7.4), 150mM NaCl, 0.02% Sodium azide and 50% Glycerol.
Preservative	0.02% Sodium azide
Stabilizer	50% Glycerol
Storage instruction	For continuous use, store undiluted antibody at 2-8°C for up to a week. For long-term storage, aliquot and store at -20°C. Storage in frost free freezers is not recommended. Avoid repeated freeze/thaw

cycles. Suggest spin the vial prior to opening. The antibody solution should be gently mixed before use.

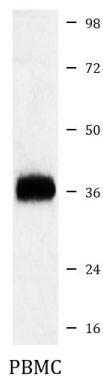
Note

For laboratory research only, not for drug, diagnostic or other use.

Bioinformation

Gene Symbol	CD7
Gene Full Name	CD7 molecule
Background	This gene encodes a transmembrane protein which is a member of the immunoglobulin superfamily. This protein is found on thymocytes and mature T cells. It plays an essential role in T-cell interactions and also in T-cell/B-cell interaction during early lymphoid development. [provided by RefSeq, Jul 2008]
Function	Not yet known. [UniProt]
Calculated Mw	25 kDa
Cellular Localization	Membrane; Single-pass type I membrane protein. [UniProt]

Images



ARG40234 anti-CD7 antibody WB image

Western blot: Human PBMC lysate stained with ARG40234 anti-CD7 antibody.