

## ARG40253 anti-Adipophilin antibody

Package: 100 µl  
Store at: -20°C

### Summary

Product Description	Rabbit Polyclonal antibody recognizes Adipophilin
Tested Reactivity	Hu, Ms, Rat
Tested Application	ICC/IF, IHC-P, WB
Host	Rabbit
Clonality	Polyclonal
Isotype	IgG
Target Name	Adipophilin
Species	Human
Immunogen	Recombinant fusion protein corresponding to aa. 168-437 of Human Adipophilin (NP_001113.2).
Conjugation	Un-conjugated
Alternate Names	ADRP; Adipophilin; Adipose differentiation-related protein; ADFP; Perilipin-2

### Application Instructions

Application table	Application	Dilution
	ICC/IF	1:50 - 1:200
	IHC-P	1:100 - 1:500
	WB	1:500 - 1:2000
Application Note	* The dilutions indicate recommended starting dilutions and the optimal dilutions or concentrations should be determined by the scientist.	
Positive Control	SW620, Mouse heart and Rat heart	
Observed Size	~ 50 kDa	

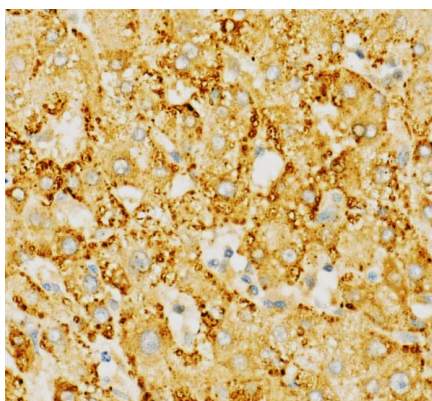
### Properties

Form	Liquid
Purification	Affinity purified.
Buffer	PBS (pH 7.3), 0.02% Sodium azide and 50% Glycerol.
Preservative	0.02% Sodium azide
Stabilizer	50% Glycerol
Storage instruction	For continuous use, store undiluted antibody at 2-8°C for up to a week. For long-term storage, aliquot and store at -20°C. Storage in frost free freezers is not recommended. Avoid repeated freeze/thaw cycles. Suggest spin the vial prior to opening. The antibody solution should be gently mixed before use.

## Bioinformation

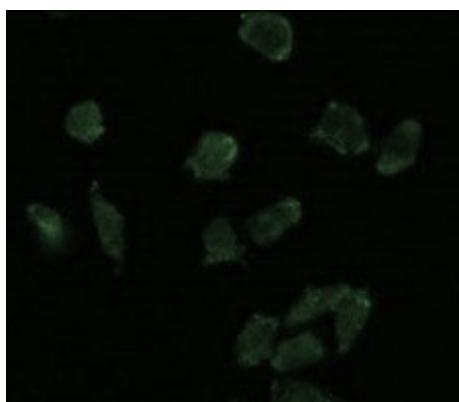
Gene Symbol	PLIN2
Gene Full Name	perilipin 2
Background	The protein encoded by this gene belongs to the perilipin family, members of which coat intracellular lipid storage droplets. This protein is associated with the lipid globule surface membrane material, and maybe involved in development and maintenance of adipose tissue. However, it is not restricted to adipocytes as previously thought, but is found in a wide range of cultured cell lines, including fibroblasts, endothelial and epithelial cells, and tissues, such as lactating mammary gland, adrenal cortex, Sertoli and Leydig cells, and hepatocytes in alcoholic liver cirrhosis, suggesting that it may serve as a marker of lipid accumulation in diverse cell types and diseases. Alternatively spliced transcript variants have been found for this gene. [provided by RefSeq, Mar 2011]
Function	May be involved in development and maintenance of adipose tissue. [UniProt]
Calculated Mw	48 kDa
PTM	Acylated; primarily with C14, C16 and C18 fatty acids. [UniProt]
Cellular Localization	Membrane; Peripheral membrane protein. Lipid droplet. [UniProt]

## Images



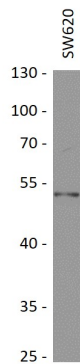
ARG40253 anti-Adipophilin antibody IHC-P image

Immunohistochemistry: Human liver stained with ARG40253 anti-Adipophilin antibody at 1:500 dilution.



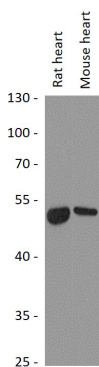
ARG40253 anti-Adipophilin antibody ICC/IF image

Immunofluorescence: HeLa cells stained with ARG40253 anti-Adipophilin antibody at 1:100 dilution.



#### ARG40253 anti-Adipophilin antibody WB image

Western blot: 25 µg of SW620 cell lysate stained with ARG40253 anti-Adipophilin antibody at 1:1000 dilution.



#### ARG40253 anti-Adipophilin antibody WB image

Western blot: 25 µg of Rat heart and Mouse heart lysates stained with ARG40253 anti-Adipophilin antibody at 1:1000 dilution.