

ARG40267 anti-AGL antibody

Package: 100 µl
Store at: -20°C

Summary

Product Description	Rabbit Polyclonal antibody recognizes AGL
Tested Reactivity	Hu
Tested Application	ICC/IF, WB
Host	Rabbit
Clonality	Polyclonal
Isotype	IgG
Target Name	AGL
Species	Human
Immunogen	KLH-conjugated synthetic peptide corresponding to aa. 1479-1510 of Human AGL.
Conjugation	Un-conjugated
Alternate Names	Glycogen debrancher; Glycogen debranching enzyme; Oligo-1,4-1,4-glucantransferase; Amylo-1,6-glucosidase; GDE; Dextrin 6-alpha-D-glucosidase; EC 2.4.1.25; EC 3.2.1.33

Application Instructions

Application table	Application	Dilution
	ICC/IF	1:10 - 1:50
	WB	1:1000
Application Note	* The dilutions indicate recommended starting dilutions and the optimal dilutions or concentrations should be determined by the scientist.	
Positive Control	Human skeletal muscle	
Observed Size	~ 170 kDa	

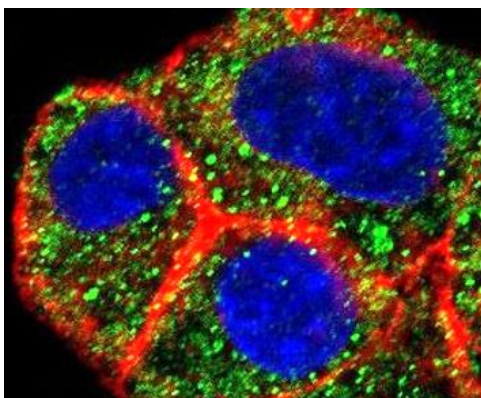
Properties

Form	Liquid
Purification	Purification with Protein A.
Buffer	PBS and 0.09% (W/V) Sodium azide.
Preservative	0.09% (W/V) Sodium azide
Storage instruction	For continuous use, store undiluted antibody at 2-8°C for up to a week. For long-term storage, aliquot and store at -20°C or below. Storage in frost free freezers is not recommended. Avoid repeated freeze/thaw cycles. Suggest spin the vial prior to opening. The antibody solution should be gently mixed before use.
Note	For laboratory research only, not for drug, diagnostic or other use.

Bioinformation

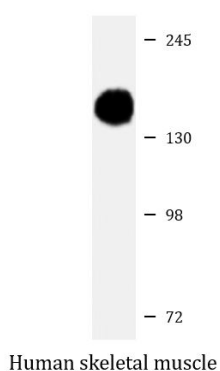
Gene Symbol	AGL
Gene Full Name	amylo-alpha-1, 6-glucosidase, 4-alpha-glucanotransferase
Background	This gene encodes the glycogen debrancher enzyme which is involved in glycogen degradation. This enzyme has two independent catalytic activities which occur at different sites on the protein: a 4-alpha-glucotransferase activity and a amylo-1,6-glucosidase activity. Mutations in this gene are associated with glycogen storage disease although a wide range of enzymatic and clinical variability occurs which may be due to tissue-specific alternative splicing. Alternatively spliced transcripts encoding different isoforms have been described. [provided by RefSeq, Jul 2008]
Function	Multifunctional enzyme acting as 1,4-alpha-D-glucan:1,4-alpha-D-glucan 4-alpha-D-glycosyltransferase and amylo-1,6-glucosidase in glycogen degradation. [UniProt]
Calculated Mw	175 kDa
PTM	The N-terminus is blocked. Ubiquitinated. [UniProt]
Cellular Localization	Cytoplasm. Note=Under glycogenolytic conditions localizes to the nucleus. [UniProt]

Images



ARG40267 anti-AGL antibody ICC/IF image

Immunofluorescence: HepG2 cells stained with ARG40267 anti-AGL antibody (green). Actin filaments have been labeled with Alexa Fluor 555 phalloidin (red). DAPI (blue) for nuclear staining.



ARG40267 anti-AGL antibody WB image

Western blot: 20 µg of Human skeletal muscle lysate stained with ARG40267 anti-AGL antibody at 1:8000 dilution.