

## ARG40274 anti-SLC13A5 antibody

Package: 50 µl  
Store at: -20°C

### Summary

Product Description	Rabbit Polyclonal antibody recognizes SLC13A5
Tested Reactivity	Hu
Predict Reactivity	Ms, Rat, Cow, Dog, Gpig, Hrs, Rb
Tested Application	WB
Host	Rabbit
Clonality	Polyclonal
Isotype	IgG
Target Name	SLC13A5
Species	Human
Immunogen	Synthetic peptide around the middle region of Human SLC13A5. (within the following region: CKAMTLCICYAASIGGTATLTGTGPNVLLGQMNELFPDSKDLVNFAFWF)
Conjugation	Un-conjugated
Alternate Names	Solute carrier family 13 member 5; mIndy; EIEE25; Na; NACT; Sodium-dependent citrate transporter; NaCT; Sodium-coupled citrate transporter

### Application Instructions

Predict Reactivity Note	Predicted Homology Based On Immunogen Sequence: Cow: 92%; Dog: 85%; Guinea pig: 100%; Horse: 85%; Mouse: 77%; Rabbit: 100%; Rat: 93%				
Application table	<table> <tr> <th>Application</th><th>Dilution</th></tr> <tr> <td>WB</td><td>1 µg/ml</td></tr> </table>	Application	Dilution	WB	1 µg/ml
Application	Dilution				
WB	1 µg/ml				
Application Note	* The dilutions indicate recommended starting dilutions and the optimal dilutions or concentrations should be determined by the scientist.				
Observed Size	~ 53 kDa				

### Properties

Form	Liquid
Purification	Affinity purified.
Buffer	PBS, 0.09% (w/v) Sodium azide and 2% Sucrose.
Preservative	0.09% (w/v) Sodium azide
Stabilizer	2% Sucrose
Concentration	Batch dependent: 0.5 - 1 mg/ml
Storage instruction	For continuous use, store undiluted antibody at 2-8°C for up to a week. For long-term storage, aliquot and store at -20°C or below. Storage in frost free freezers is not recommended. Avoid repeated

freeze/thaw cycles. Suggest spin the vial prior to opening. The antibody solution should be gently mixed before use.

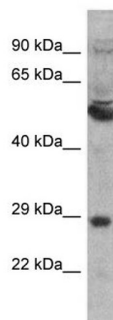
**Note** For laboratory research only, not for drug, diagnostic or other use.

## Bioinformation

Gene Symbol	SLC13A5
Gene Full Name	solute carrier family 13 (sodium-dependent citrate transporter), member 5
Background	This gene encodes a protein belonging to the solute carrier family 13 group of proteins. This family member is a sodium-dependent citrate cotransporter that may regulate metabolic processes. Mutations in this gene cause early infantile epileptic encephalopathy 25. Alternative splicing results in multiple transcript variants. [provided by RefSeq, Aug 2014]
Function	High-affinity sodium/citrate cotransporter that mediates citrate entry into cells. The transport process is electrogenic; it is the trivalent form of citrate rather than the divalent form that is recognized as a substrate. May facilitate the utilization of circulating citrate for the generation of metabolic energy and for the synthesis of fatty acids and cholesterol. [UniProt]
Calculated Mw	63 kDa
Cellular Localization	Membrane; Multi-pass membrane protein. Cell membrane. [UniProt]

## Images

Human thymus tumor



ARG40274 anti-SLC13A5 antibody WB image

Western blot: Human thymus tumor lysate stained with ARG40274 anti-SLC13A5 antibody at 1 µg/ml dilution.