

ARG40290 anti-SM22 alpha / Transgelin antibody [TAGLN/247]

Package: 50 µg
Store at: -20°C

Summary

Product Description	Mouse Monoclonal antibody [TAGLN/247] recognizes SM22 alpha / Transgelin
Tested Reactivity	Hu
Tested Application	IHC-P
Host	Mouse
Clonality	Monoclonal
Clone	TAGLN/247
Isotype	IgG1, kappa
Target Name	SM22 alpha / Transgelin
Species	Human
Immunogen	Recombinant full-length Human SM22 alpha / Transgelin.
Conjugation	Un-conjugated
Alternate Names	SM22-alpha; 22 kDa actin-binding protein; Smooth muscle protein 22-alpha; Protein WS3-10; Transgelin; WS3-10; TAGLN1; SMCC; SM22

Application Instructions

Application table	Application	Dilution
	IHC-P	0.5 - 1 µg/ml
Application Note	<p>IHC-P: Antigen Retrieval: Boil tissue section in 10 mM Tris with 1 mM EDTA (pH 9.0), for 10-20 min followed by cooling at RT for 20 min.</p> <p>* The dilutions indicate recommended starting dilutions and the optimal dilutions or concentrations should be determined by the scientist.</p>	

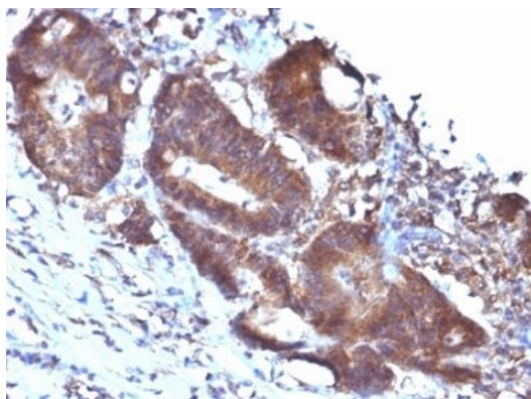
Properties

Form	Liquid
Purification	Purification with Protein G.
Buffer	PBS, 0.05% Sodium azide and 0.1 mg/ml BSA.
Preservative	0.05% Sodium azide
Stabilizer	0.1 mg/ml BSA
Concentration	0.2 mg/ml
Storage instruction	For continuous use, store undiluted antibody at 2-8°C for up to a week. For long-term storage, aliquot and store at -20°C or below. Storage in frost free freezers is not recommended. Avoid repeated freeze/thaw cycles. Suggest spin the vial prior to opening. The antibody solution should be gently mixed before use.

Bioinformation

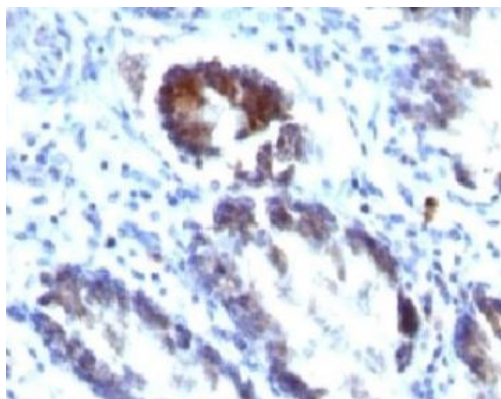
Gene Symbol	TAGLN
Gene Full Name	transgelin
Background	The protein encoded by this gene is a transformation and shape-change sensitive actin cross-linking/gelling protein found in fibroblasts and smooth muscle. Its expression is down-regulated in many cell lines, and this down-regulation may be an early and sensitive marker for the onset of transformation. A functional role of this protein is unclear. Two transcript variants encoding the same protein have been found for this gene. [provided by RefSeq, Jul 2008]
Function	Actin cross-linking/gelling protein (By similarity). Involved in calcium interactions and contractile properties of the cell that may contribute to replicative senescence. [UniProt]
Research Area	Cell Biology and Cellular Response antibody; Controls and Markers antibody; Signaling Transduction antibody; Smooth Muscle Marker antibody
Calculated Mw	23 kDa
Cellular Localization	Cytoplasm. [UniProt]

Images



ARG40290 anti-SM22 alpha / Transgelin antibody [TAGLN/247] IHC-P image

Immunohistochemistry: Formalin-fixed and paraffin-embedded Human colon carcinoma stained with ARG40290 anti-SM22 alpha / Transgelin antibody [TAGLN/247].



ARG40290 anti-SM22 alpha / Transgelin antibody [TAGLN/247] IHC-P image

Immunohistochemistry: Formalin-fixed and paraffin-embedded Human colon carcinoma stained with ARG40290 anti-SM22 alpha / Transgelin antibody [TAGLN/247].