

## ARG40329 anti-LRPAP1 antibody

Package: 100 µl  
Store at: -20°C

### Summary

Product Description	Rabbit Polyclonal antibody recognizes LRPAP1
Tested Reactivity	Hu, Ms, Rat
Tested Application	ICC/IF, IHC-P, WB
Host	Rabbit
Clonality	Polyclonal
Isotype	IgG
Target Name	LRPAP1
Species	Human
Immunogen	Synthetic peptide of Human LRPAP1.
Conjugation	Un-conjugated
Alternate Names	Low density lipoprotein receptor-related protein-associated protein 1; Alpha-2-MRAP; MRAP; Alpha-2-macroglobulin receptor-associated protein; MYP23; A2RAP; RAP; alpha-2-MRAP; HBP44; A2MRAP

### Application Instructions

Application table	Application	Dilution
	ICC/IF	1:50 - 1:200
	IHC-P	1:50 - 1:200
	WB	1:500 - 1:2000
Application Note	* The dilutions indicate recommended starting dilutions and the optimal dilutions or concentrations should be determined by the scientist.	
Positive Control	THP-1	
Observed Size	39 kDa	

### Properties

Form	Liquid
Purification	Affinity purified.
Buffer	PBS (pH 7.3), 0.02% Sodium azide and 50% Glycerol.
Preservative	0.02% Sodium azide
Stabilizer	50% Glycerol
Storage instruction	For continuous use, store undiluted antibody at 2-8°C for up to a week. For long-term storage, aliquot and store at -20°C. Storage in frost free freezers is not recommended. Avoid repeated freeze/thaw cycles. Suggest spin the vial prior to opening. The antibody solution should be gently mixed before use.

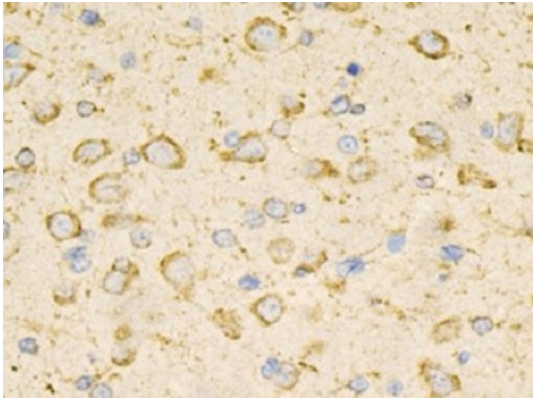
Note

For laboratory research only, not for drug, diagnostic or other use.

Bioinformation

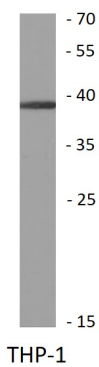
Gene Symbol	LRPAP1
Gene Full Name	low density lipoprotein receptor-related protein associated protein 1
Background	This gene encodes a protein that interacts with the low density lipoprotein (LDL) receptor-related protein and facilitates its proper folding and localization by preventing the binding of ligands. Mutations in this gene have been identified in individuals with myopia 23. Alternative splicing results in multiple transcript variants. [provided by RefSeq, Dec 2013]
Function	Interacts with LRP1/alpha-2-macroglobulin receptor and glycoprotein 330. [UniProt]
Calculated Mw	41 kDa
PTM	N-glycosylated. [UniProt]
Cellular Localization	Rough endoplasmic reticulum lumen. Endoplasmic reticulum-Golgi intermediate compartment lumen. Golgi apparatus, cis-Golgi network. Golgi apparatus lumen. Endosome lumen. Cell surface. Note=May be associated with receptors at the cell surface. [UniProt]

Images



ARG40329 anti-LRPAP1 antibody IHC-P image

Immunohistochemistry: Paraffin-embedded Rat brain stained with ARG40329 anti-LRPAP1 antibody at 1:200 dilution.



ARG40329 anti-LRPAP1 antibody WB image

Western blot: 25 µg of THP-1 cell lysate stained with ARG40329 anti-LRPAP1 antibody at 1:200 dilution.