

## ARG40331 anti-SLC25A6 / ANT3 antibody

Package: 100 µl  
Store at: -20°C

### Summary

Product Description	Rabbit Polyclonal antibody recognizes SLC25A6 / ANT3
Tested Reactivity	Hu, Ms, Rat
Tested Application	ICC/IF, WB
Host	Rabbit
Clonality	Polyclonal
Isotype	IgG
Target Name	SLC25A6 / ANT3
Species	Human
Immunogen	Recombinant fusion protein corresponding to aa. 1-298 of Human SLC25A6 (NP_001627.2).
Conjugation	Un-conjugated
Alternate Names	ANT3Y; Adenine nucleotide translocator 3; ANT3; ANT; ADP/ATP translocase 3; Solute carrier family 25 member 6; AAC3; ADP,ATP carrier protein, isoform T2; ANT 2; ANT 3; ADP,ATP carrier protein 3

### Application Instructions

Application table	Application	Dilution
	ICC/IF	1:50 - 1:200
	WB	1:200 - 1:2000
Application Note	* The dilutions indicate recommended starting dilutions and the optimal dilutions or concentrations should be determined by the scientist.	
Positive Control	Rat heart and Mouse liver	
Observed Size	32 kDa	

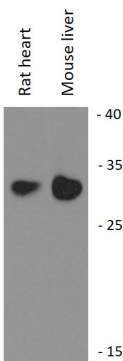
### Properties

Form	Liquid
Purification	Affinity purified.
Buffer	PBS (pH 7.3), 0.02% Sodium azide and 50% Glycerol.
Preservative	0.02% Sodium azide
Stabilizer	50% Glycerol
Storage instruction	For continuous use, store undiluted antibody at 2-8°C for up to a week. For long-term storage, aliquot and store at -20°C. Storage in frost free freezers is not recommended. Avoid repeated freeze/thaw cycles. Suggest spin the vial prior to opening. The antibody solution should be gently mixed before use.
Note	For laboratory research only, not for drug, diagnostic or other use.

Bioinformation

Gene Symbol	SLC25A6
Gene Full Name	solute carrier family 25 (mitochondrial carrier; adenine nucleotide translocator), member 6
Background	This gene is a member of the mitochondrial carrier subfamily of solute carrier protein genes. The product of this gene functions as a gated pore that translocates ADP from the cytoplasm into the mitochondrial matrix and ATP from the mitochondrial matrix into the cytoplasm. The protein is implicated in the function of the permeability transition pore complex (PTPC), which regulates the release of mitochondrial products that induce apoptosis. The human genome contains several non-transcribed pseudogenes of this gene. [provided by RefSeq, Jun 2013]
Function	Catalyzes the exchange of cytoplasmic ADP with mitochondrial ATP across the mitochondrial inner membrane. May participate in the formation of the permeability transition pore complex (PTPC) responsible for the release of mitochondrial products that triggers apoptosis. [UniProt]
Calculated Mw	33 kDa
Cellular Localization	Mitochondrion inner membrane; Multi-pass membrane protein. Note=The complex formed with ARL2BP, ARL2 and SLC25A6 is expressed in mitochondria. [UniProt]

Images



ARG40331 anti-SLC25A6 / ANT3 antibody WB image

Western blot: 25 µg of Rat heart and Mouse liver lysates stained with ARG40331 anti-SLC25A6 / ANT3 antibody at 1:1000 dilution.