

ARG40342 anti-Caprin 1 antibody

Package: 100 µl
Store at: -20°C

Summary

Product Description	Rabbit Polyclonal antibody recognizes Caprin 1
Tested Reactivity	Hu, Ms, Rat
Tested Application	ICC/IF, WB
Host	Rabbit
Clonality	Polyclonal
Isotype	IgG
Target Name	Caprin 1
Species	Human
Immunogen	Recombinant protein of Human Caprin 1.
Conjugation	Un-conjugated
Alternate Names	GPI-anchored protein p137; RNA granule protein 105; GPI-anchored membrane protein 1; p137GPI; M11S1; GPIAP1; GPIP137; Membrane component chromosome 11 surface marker 1; GPI-p137; Cytoplasmic activation- and proliferation-associated protein 1; GRIP137; Caprin-1; Cell cycle-associated protein 1; RNG105

Application Instructions

Application table	Application	Dilution
	ICC/IF	1:50 - 1:200
	WB	1:500 - 1:2000
Application Note	* The dilutions indicate recommended starting dilutions and the optimal dilutions or concentrations should be determined by the scientist.	
Positive Control	Jurkat	
Observed Size	115 kDa	

Properties

Form	Liquid
Purification	Affinity purified.
Buffer	PBS (pH 7.3), 0.02% Sodium azide and 50% Glycerol.
Preservative	0.02% Sodium azide
Stabilizer	50% Glycerol
Storage instruction	For continuous use, store undiluted antibody at 2-8°C for up to a week. For long-term storage, aliquot and store at -20°C. Storage in frost free freezers is not recommended. Avoid repeated freeze/thaw cycles. Suggest spin the vial prior to opening. The antibody solution should be gently mixed before use.

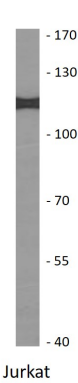
Note

For laboratory research only, not for drug, diagnostic or other use.

Bioinformation

Gene Symbol	CAPRIN1
Gene Full Name	cell cycle associated protein 1
Function	May regulate the transport and translation of mRNAs of proteins involved in synaptic plasticity in neurons and cell proliferation and migration in multiple cell types. [UniProt]
Calculated Mw	78 kDa
PTM	O-glycosylated (O-GlcNAcylated), in a cell cycle-dependent manner. [UniProt]
Cellular Localization	Cytoplasm, cytosol. Cell projection, dendrite. Note=Associated with RNA granules. [UniProt]

Images



ARG40342 anti-Caprin 1 antibody WB image

Western blot: 25 µg of Jurkat cell lysate stained with ARG40342 anti-Caprin 1 antibody at 1:500 dilution.