

ARG40380 anti-LCP1 / Plastin L antibody

Package: 50 µg
Store at: -20°C

Summary

Product Description	Rabbit Polyclonal antibody recognizes LCP1 / Plastin L
Tested Reactivity	Hu, Ms, Rat
Tested Application	FACS, ICC/IF, IHC-P, WB
Host	Rabbit
Clonality	Polyclonal
Isotype	IgG
Target Name	LCP1 / Plastin L
Species	Human
Immunogen	Recombinant protein corresponding to M1-K444 of Human LCP1.
Conjugation	Un-conjugated
Alternate Names	LC64P; L-PLASTIN; CP64; HEL-S-37; LCP-1; LPL; L-plastin; Lymphocyte cytosolic protein 1; Plastin-2; PLS2

Application Instructions

Application table	Application	Dilution
	FACS	1:150 - 1:500
	ICC/IF	1:200 - 1:1000
	IHC-P	0.5 - 1 µg/ml
	WB	0.1 - 0.5 µg/ml
Application Note	IHC-P: Antigen Retrieval: Heat mediation was performed in Citrate buffer (pH 6.0) for 20 min. * The dilutions indicate recommended starting dilutions and the optimal dilutions or concentrations should be determined by the scientist.	
Observed Size	70 kDa	

Properties

Form	Liquid
Purification	Affinity purification with immunogen.
Buffer	0.2% Na ₂ HPO ₄ , 0.9% NaCl, 0.05% Sodium azide and 4% Trehalose.
Preservative	0.05% Sodium azide
Stabilizer	4% Trehalose
Concentration	0.5 mg/ml
Storage instruction	For continuous use, store undiluted antibody at 2-8°C for up to a week. For long-term storage, aliquot and store at -20°C or below. Storage in frost free freezers is not recommended. Avoid repeated

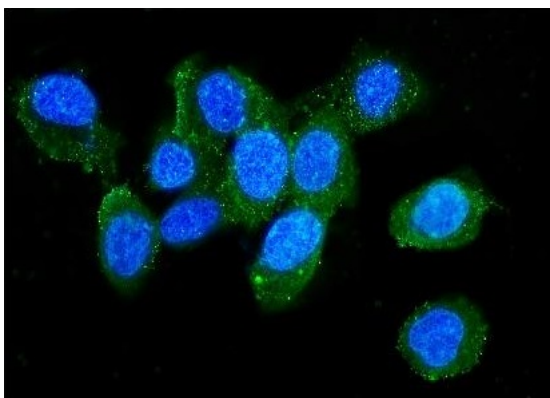
freeze/thaw cycles. Suggest spin the vial prior to opening. The antibody solution should be gently mixed before use.

Note For laboratory research only, not for drug, diagnostic or other use.

Bioinformation

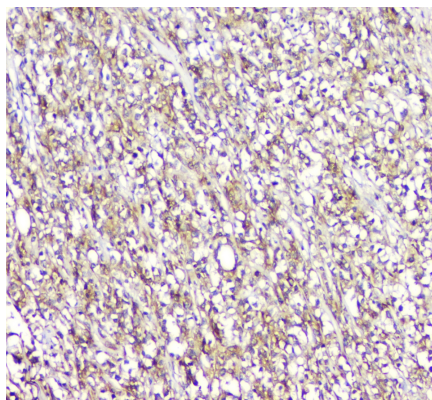
Gene Symbol	LCP1
Gene Full Name	lymphocyte cytosolic protein 1 (L-plastin)
Background	Plastins are a family of actin-binding proteins that are conserved throughout eukaryote evolution and expressed in most tissues of higher eukaryotes. In humans, two ubiquitous plastin isoforms (L and T) have been identified. Plastin 1 (otherwise known as Fimbrin) is a third distinct plastin isoform which is specifically expressed at high levels in the small intestine. The L isoform is expressed only in hemopoietic cell lineages, while the T isoform has been found in all other normal cells of solid tissues that have replicative potential (fibroblasts, endothelial cells, epithelial cells, melanocytes, etc.). However, L-plastin has been found in many types of malignant human cells of non-hemopoietic origin suggesting that its expression is induced accompanying tumorigenesis in solid tissues. [provided by RefSeq, Jul 2008]
Function	Actin-binding protein. Plays a role in the activation of T-cells in response to costimulation through TCR/CD3 and CD2 or CD28. Modulates the cell surface expression of IL2RA/CD25 and CD69. [UniProt]
Calculated Mw	70 kDa
PTM	Phosphorylated on a serine residue in response to costimulation through TCR/CD3 and CD2 or CD28. Serine phosphorylation promotes association with the actin cytoskeleton and targeting to peripheral cell projections. [UniProt]
Cellular Localization	Cytoplasm, cytoskeleton. Cell junction. Cell projection. Cell projection, ruffle membrane; Peripheral membrane protein; Cytoplasmic side. Note=Relocalizes to the immunological synapse between peripheral blood T-lymphocytes and antibody-presenting cells in response to costimulation through TCR/CD3 and CD2 or CD28 (PubMed:17294403). Associated with the actin cytoskeleton at membrane ruffles. Relocalizes to actin-rich cell projections upon serine phosphorylation (PubMed:16636079). [UniProt]

Images



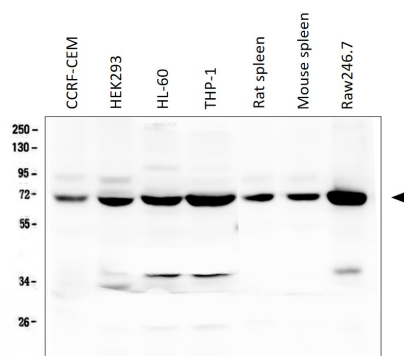
ARG40380 anti-LCP1 / Plastin L antibody ICC/IF image

Immunofluorescence: A431 cells were blocked with 10% goat serum and then stained with ARG40380 anti-LCP1 / Plastin L antibody (green) at 2 µg/ml dilution, overnight at 4°C. DAPI (blue) for nuclear staining.



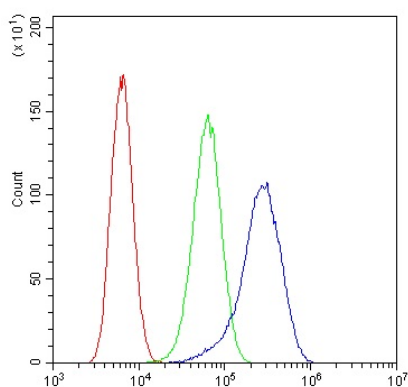
ARG40380 anti-LCP1 / Plastin L antibody IHC-P image

Immunohistochemistry: Paraffin-embedded Human B lymphocytic tumor tissue. Antigen Retrieval: Heat mediation was performed in Citrate buffer (pH 6.0, epitope retrieval solution) for 20 min. The tissue section was blocked with 10% goat serum. The tissue section was then stained with ARG40380 anti-LCP1 / Plastin L antibody at 1 µg/ml, overnight at 4°C.



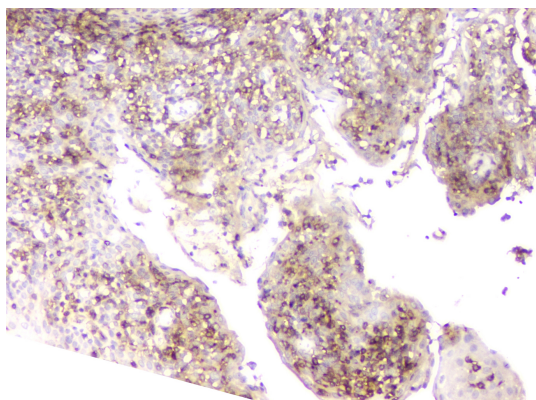
ARG40380 anti-LCP1 / Plastin L antibody WB image

Western blot: 50 µg of samples under reducing conditions. Human CCRF-CEM, HEK293, HL-60, THP-1, Rat spleen, Mouse spleen and Raw246.7 cell lysates stained with ARG40380 anti-LCP1 / Plastin L antibody at 0.5 µg/ml, overnight at 4°C.



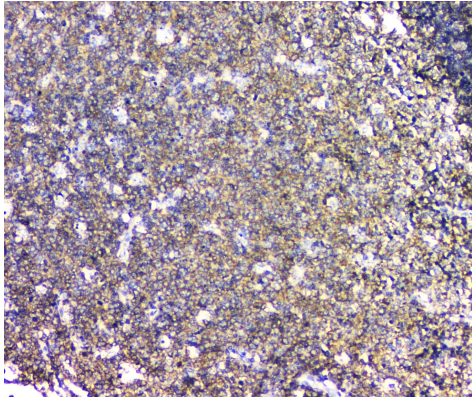
ARG40380 anti-LCP1 / Plastin L antibody FACS image

Flow Cytometry: U2OS cells were blocked with 10% normal goat serum and then stained with ARG40380 anti-LCP1 / Plastin L antibody (blue) at 1 µg/10⁶ cells for 30 min at 20°C, followed by incubation with DyLight[®]488 labelled secondary antibody. Isotype control antibody (green) was rabbit IgG (1 µg/10⁶ cells) used under the same conditions. Unlabelled sample (red) was also used as a control.



ARG40380 anti-LCP1 / Plastin L antibody IHC-P image

Immunohistochemistry: Paraffin-embedded Human tonsil tissue. Antigen Retrieval: Heat mediation was performed in Citrate buffer (pH 6.0, epitope retrieval solution) for 20 min. The tissue section was blocked with 10% goat serum. The tissue section was then stained with ARG40380 anti-LCP1 / Plastin L antibody at 1 µg/ml, overnight at 4°C.



ARG40380 anti-LCP1 / Plastin L antibody IHC-P image

Immunohistochemistry: Paraffin-embedded Human tonsil tissue.
Antigen Retrieval: Heat mediation was performed in Citrate buffer (pH 6.0, epitope retrieval solution) for 20 min. The tissue section was blocked with 10% goat serum. The tissue section was then stained with ARG40380 anti-LCP1 / Plastin L antibody at 1 µg/ml, overnight at 4°C.