

## ARG40421 anti-MEP1A / Meprin alpha antibody

Package: 50 µl  
Store at: -20°C

### Summary

Product Description	Rabbit Polyclonal antibody recognizes MEP1A / Meprin alpha
Tested Reactivity	Hu
Tested Application	IHC-P
Host	Rabbit
Clonality	Polyclonal
Isotype	IgG
Target Name	MEP1A / Meprin alpha
Species	Mouse
Immunogen	Synthetic peptide corresponding to Asn219 - Gly463 of Mouse MEP1A / Meprin alpha.
Conjugation	Un-conjugated
Alternate Names	PABA peptide hydrolase; PPH alpha; PPHA; Meprin A subunit alpha; EC 3.4.24.18; N-benzoyl-L-tyrosyl-P-amino-benzoic acid hydrolase subunit alpha; Endopeptidase-2

### Application Instructions

Application table	Application	Dilution
	IHC-P	Assay-dependent
Application Note	* The dilutions indicate recommended starting dilutions and the optimal dilutions or concentrations should be determined by the scientist.	

### Properties

Form	Liquid
Purification	Affinity purified.
Buffer	PBS (pH 7.4), 0.02% Sodium azide and 50% Glycerol.
Preservative	0.02% Sodium azide
Stabilizer	50% Glycerol
Storage instruction	For continuous use, store undiluted antibody at 2-8°C for up to a week. For long-term storage, aliquot and store at -20°C. Storage in frost free freezers is not recommended. Avoid repeated freeze/thaw cycles. Suggest spin the vial prior to opening. The antibody solution should be gently mixed before use.
Note	For laboratory research only, not for drug, diagnostic or other use.

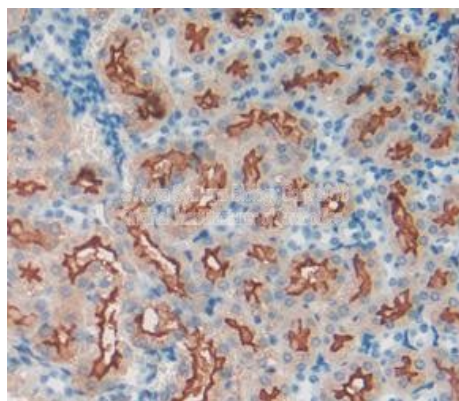
### Bioinformation

Gene Symbol	MEP1A
-------------	-------

Gene Full Name	meprin A, alpha (PABA peptide hydrolase)
Calculated Mw	84 kDa
PTM	N-glycosylated; contains GlcNAc, galactose, mannose and a small amount of fucose. [UniProt]
Cellular Localization	Membrane; Single-pass type I membrane protein. [UniProt]

## Images

---



ARG40421 anti-MEP1A / Meprin alpha antibody IHC-P image

Immunohistochemistry: Formalin-fixed and paraffin-embedded Human kidney tissue stained with ARG40421 anti-MEP1A / Meprin alpha antibody.