

ARG40447 anti-MYH1 antibody

Package: 100 µl
Store at: -20°C

Summary

Product Description	Rabbit Polyclonal antibody recognizes MYH1
Tested Reactivity	Hu, Ms, Rat
Tested Application	ICC/IF, IHC-P, WB
Specificity	The antibody might also react to MYH4 (95%), MYH2 (90%) and MTH8 (85%) based on sequence homology analysis.
Host	Rabbit
Clonality	Polyclonal
Isotype	IgG
Target Name	MYH1
Species	Human
Immunogen	Recombinant fusion protein corresponding to aa. 1-100 of Human MYH1 (NP_005954.3).
Conjugation	Un-conjugated
Alternate Names	Myosin heavy chain IIx/d; MYHa; HEL71; MyHC-IIx/d; Myosin heavy chain 1; MyHC-2x; MyHC-2X/D; Myosin heavy chain, skeletal muscle, adult 1; Myosin heavy chain 2x; Myosin-1; MYHSA1

Application Instructions

Application table	Application	Dilution
	ICC/IF	1:50 - 1:200
	IHC-P	1:50 - 1:200
	WB	1:500 - 1:2000
Application Note	* The dilutions indicate recommended starting dilutions and the optimal dilutions or concentrations should be determined by the scientist.	
Positive Control	Mouse heart	
Observed Size	260 kDa	

Properties

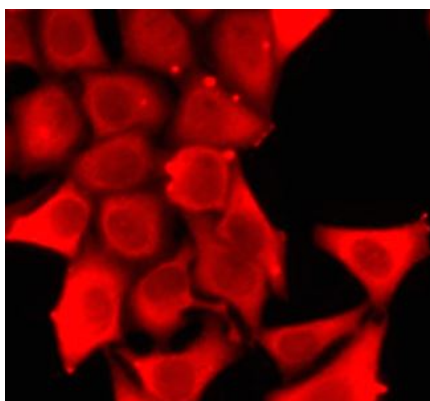
Form	Liquid
Purification	Affinity purified.
Buffer	PBS (pH 7.3), 0.02% Sodium azide and 50% Glycerol.
Preservative	0.02% Sodium azide
Stabilizer	50% Glycerol

Storage instruction	For continuous use, store undiluted antibody at 2-8°C for up to a week. For long-term storage, aliquot and store at -20°C. Storage in frost free freezers is not recommended. Avoid repeated freeze/thaw cycles. Suggest spin the vial prior to opening. The antibody solution should be gently mixed before use.
Note	For laboratory research only, not for drug, diagnostic or other use.

Bioinformation

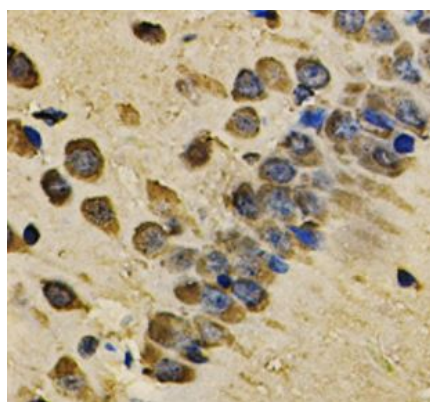
Gene Symbol	MYH1
Gene Full Name	myosin, heavy chain 1, skeletal muscle, adult
Background	Myosin is a major contractile protein which converts chemical energy into mechanical energy through the hydrolysis of ATP. Myosin is a hexameric protein composed of a pair of myosin heavy chains (MYH) and two pairs of nonidentical light chains. Myosin heavy chains are encoded by a multigene family. In mammals at least 10 different myosin heavy chain (MYH) isoforms have been described from striated, smooth, and nonmuscle cells. These isoforms show expression that is spatially and temporally regulated during development. [provided by RefSeq, Jul 2008]
Function	Muscle contraction. [UniProt]
Calculated Mw	223 kDa
Cellular Localization	Cytoplasm, myofibril. Note=Thick filaments of the myofibrils. [UniProt]

Images



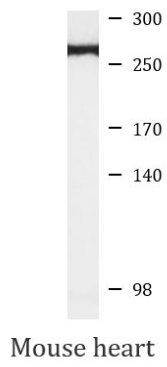
ARG40447 anti-MYH1 antibody ICC/IF image

Immunofluorescence: U2OS cells stained with ARG40447 anti-MYH1 antibody.



ARG40447 anti-MYH1 antibody IHC-P image

Immunohistochemistry: Paraffin-embedded Rat brain stained with ARG40447 anti-MYH1 antibody at 1:100 dilution.



ARG40447 anti-MYH1 antibody WB image

Western blot: 25 µg of Mouse heart lysate stained with ARG40447 anti-MYH1 antibody at 1:1000 dilution.