

ARG40473 anti-ALDH6A1 antibody

Package: 100 µl
Store at: -20°C

Summary

Product Description	Rabbit Polyclonal antibody recognizes ALDH6A1
Tested Reactivity	Hu, Ms
Tested Application	FACS, IHC-P, WB
Host	Rabbit
Clonality	Polyclonal
Isotype	IgG
Target Name	ALDH6A1
Species	Human
Immunogen	KLH-conjugated synthetic peptide between aa. 30-59 of Human ALDH6A1.
Conjugation	Un-conjugated
Alternate Names	MMSDH; Malonate-semialdehyde dehydrogenase [acylating]; Aldehyde dehydrogenase family 6 member A1; Methylmalonate-semialdehyde dehydrogenase [acylating], mitochondrial; EC 1.2.1.18; EC 1.2.1.27; MMSADHA

Application Instructions

Application table	Application	Dilution
	FACS	1:10 - 1:50
	IHC-P	1:10 - 1:50
	WB	1:1000
Application Note	* The dilutions indicate recommended starting dilutions and the optimal dilutions or concentrations should be determined by the scientist.	
Positive Control	Human liver	
Observed Size	57 kDa	

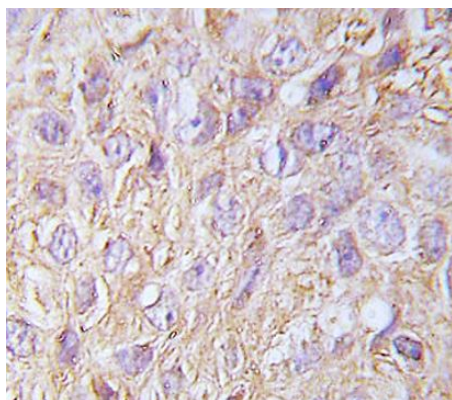
Properties

Form	Liquid
Purification	Purification with Protein A and immunogen peptide.
Buffer	PBS and 0.09% (W/V) Sodium azide.
Preservative	0.09% (W/V) Sodium azide.
Storage instruction	For continuous use, store undiluted antibody at 2-8°C for up to a week. For long-term storage, aliquot and store at -20°C or below. Storage in frost free freezers is not recommended. Avoid repeated freeze/thaw cycles. Suggest spin the vial prior to opening. The antibody solution should be gently mixed before use.

Bioinformation

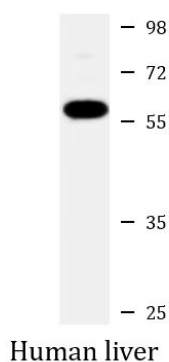
Gene Symbol	ALDH6A1
Gene Full Name	aldehyde dehydrogenase 6 family, member A1
Background	This gene encodes a member of the aldehyde dehydrogenase protein family. The encoded protein is a mitochondrial methylmalonate semialdehyde dehydrogenase that plays a role in the valine and pyrimidine catabolic pathways. This protein catalyzes the irreversible oxidative decarboxylation of malonate and methylmalonate semialdehydes to acetyl- and propionyl-CoA. Methylmalonate semialdehyde dehydrogenase deficiency is characterized by elevated beta-alanine, 3-hydroxypropionic acid, and both isomers of 3-amino and 3-hydroxyisobutyric acids in urine organic acids. Alternate splicing results in multiple transcript variants. [provided by RefSeq, Jun 2013]
Function	Plays a role in valine and pyrimidine metabolism. Binds fatty acyl-CoA. [UniProt]
Calculated Mw	58 kDa
Cellular Localization	Mitochondrion. [UniProt]

Images



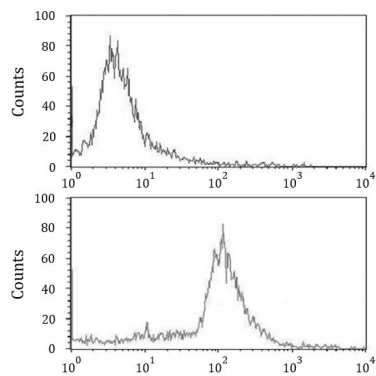
ARG40473 anti-ALDH6A1 antibody IHC-P image

Immunohistochemistry: Formalin-fixed and paraffin-embedded Human breast carcinoma tissue stained with ARG40473 anti-ALDH6A1 antibody.



ARG40473 anti-ALDH6A1 antibody WB image

Western blot: 20 µg of Human liver lysate stained with ARG40473 anti-ALDH6A1 antibody at 1:1000 dilution.



ARG40473 anti-ALDH6A1 antibody FACS image

Flow Cytometry: ATDC5 cells stained with ARG40473 anti-ALDH6A1 antibody (bottom histogram) or without primary antibody as control (top histogram), followed by incubation with FITC labelled secondary antibody.