

ARG40496 anti-SMAD5 phospho (Ser463 / 465) antibody

Package: 100 µl
Store at: -20°C

Summary

Product Description	Rabbit Polyclonal antibody recognizes SMAD5 phospho (Ser463 / 465)
Tested Reactivity	Hu, Ms, Rat
Tested Application	IHC-P, WB
Specificity	This antibody may cross-react with SMAD1 phospho (pS463/465) and SMAD9 phospho (pS465/467).
Host	Rabbit
Clonality	Polyclonal
Isotype	IgG
Target Name	SMAD5
Species	Human
Immunogen	Phosphospecific peptide around Ser463/465 of Human SMAD5.
Conjugation	Un-conjugated
Alternate Names	DWFC; Smad5; JV5-1; Mothers against decapentaplegic homolog 5; Mothers against DPP homolog 5; hSmad5; MADH5; SMAD 5; MAD homolog 5; SMAD family member 5

Application Instructions

Application table	Application	Dilution
	IHC-P	1:50 - 1:200
	WB	1:500 - 1:2000
Application Note	* The dilutions indicate recommended starting dilutions and the optimal dilutions or concentrations should be determined by the scientist.	

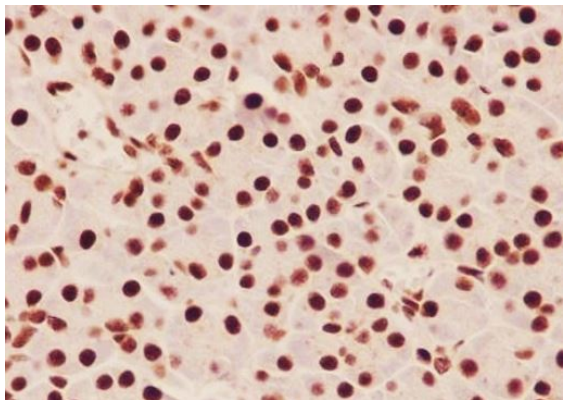
Properties

Form	Liquid
Purification	Affinity purified.
Buffer	PBS (pH 7.4), 0.02% Sodium azide and 50% Glycerol.
Preservative	0.02% Sodium azide
Stabilizer	50% Glycerol
Storage instruction	For continuous use, store undiluted antibody at 2-8°C for up to a week. For long-term storage, aliquot and store at -20°C. Storage in frost free freezers is not recommended. Avoid repeated freeze/thaw cycles. Suggest spin the vial prior to opening. The antibody solution should be gently mixed before use.
Note	For laboratory research only, not for drug, diagnostic or other use.

Bioinformation

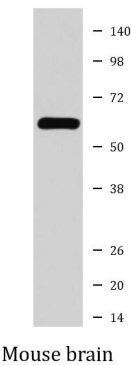
Gene Symbol	SMAD5
Gene Full Name	SMAD family member 5
Background	The protein encoded by this gene is involved in the transforming growth factor beta signaling pathway that results in an inhibition of the proliferation of hematopoietic progenitor cells. The encoded protein is activated by bone morphogenetic proteins type 1 receptor kinase, and may be involved in cancer. Alternative splicing results in multiple transcript variants. [provided by RefSeq, Feb 2014]
Function	Transcriptional modulator activated by BMP (bone morphogenetic proteins) type 1 receptor kinase. SMAD5 is a receptor-regulated SMAD (R-SMAD). [UniProt]
Calculated Mw	52 kDa
PTM	Phosphorylated on serine by BMP (bone morphogenetic proteins) type 1 receptor kinase. Ubiquitin-mediated proteolysis by SMAD-specific E3 ubiquitin ligase SMURF1. [UniProt]
Cellular Localization	Cytoplasm. Nucleus. Note=Cytoplasmic in the absence of ligand. Migrates to the nucleus when complexed with SMAD4. [UniProt]

Images



ARG40496 anti-SMAD5 phospho (Ser463/465) antibody IHC-P image

Immunohistochemistry: Paraffin-embedded Human pancreas tissue stained with ARG40496 anti-SMAD5 phospho (Ser463/465) antibody.



ARG40496 anti-SMAD5 phospho (Ser463/465) antibody WB image

Western blot: Mouse brain tissue lysate stained with ARG40496 anti-SMAD5 phospho (Ser463/465) antibody.